

esi



Evolve228-FM

Evolve2-FM + extended pole



Evolve228-FM

Evolve2-FM + extended pole



esi

Product specs

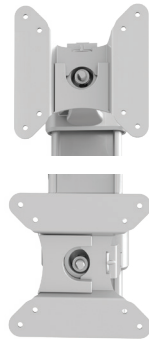
- Finger touch dynamic height adjustment
- Recommended for worksurfaces 36.0" deep or less
- 29.2" arm extension
- 4.1" arm retraction
- +90°/-25° monitor tilt
- ±90° VESA rotation
- 6.5 lb.–17.6 lb. weight capacity (*per arm*)
- 30.0" pole height (*includes base*)
- VESA 75mm/100mm quick release
- 180° lock-out feature
- Desk clamp and grommet mount included
- 32.0" max. monitor width
Bezel measured left to right.
Max. width is contingent on weight capacity.
- Warranty 15 yr.



standard 18.0" pole show on right



VESA quick release



landscape/portrait rotation



grommet mount



desk clamp

Model

List price

<input type="radio"/> EVOLVE228-FM-SLV	\$816
<input checked="" type="radio"/> EVOLVE228-FM-BLK	\$816
<input type="radio"/> EVOLVE228-FM-WHT	\$816

Evolve monitor arm key

F - Fixed monitor arm

M - Motion monitor arm

S - Slider mount

Evolve for every need

- As workstation needs change, so can the Evolve configurations. Additional components sold separately
- Benching system mount(s) available

Call our Customer Service Department for compatibility and pricing for custom configurations.

Evolve228-FM

esi

Evolve2-FM + extended pole

