



# Edge<sup>®</sup> 2-Max

Heavy duty dual monitor arm

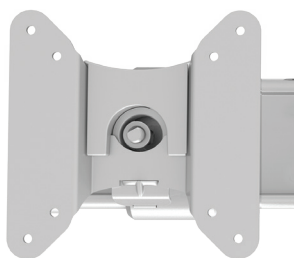
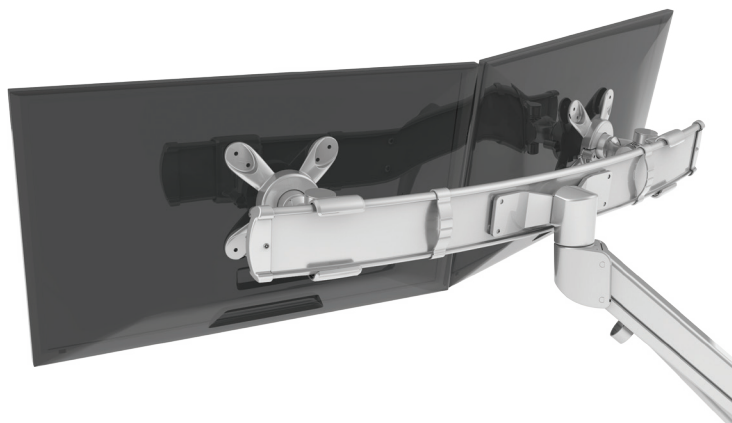
V35 - Pricing effective 6/1/2021

# Edge2-Max

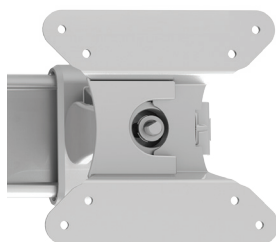
Heavy duty dual monitor arm



esi®



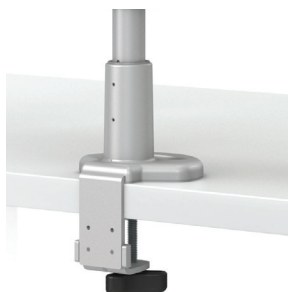
landscape rotation



portrait rotation



grommet mount



desk clamp

## Product specs

- Finger touch dynamic height adjustment
- Weight capacity counterbalanced for heavy monitors and all-in-one computers
- Recommended for worksurfaces 36.0" deep or less
- 13.8" height adjustment range
  - 9.0"–22.8" (low/high)
- 30.5" arm extension
- 8.5" arm retraction
- $\pm 55^\circ$  monitor tilt
- $\pm 90^\circ$  VESA rotation
- 12.0lb.–38.5lb. weight capacity  
(combined weight of both monitors)
- 30.3" total width of crossbar
- 180° lock-out feature
- 360° rotation at two points
- Meets or exceeds BIFMA x5.5 and CSA CAN/CGSB44.227 guidelines
- Desk clamp and grommet mount included
- 24.0" max. monitor width  
*Bezel measured left to right.*  
*Max. width is contingent on weight capacity.*
- Warranty: 15yr.



## Model #

## List price

○ EDGE2-MAX-SLV \$767

# Edge2-Max

Heavy duty dual monitor arm

