

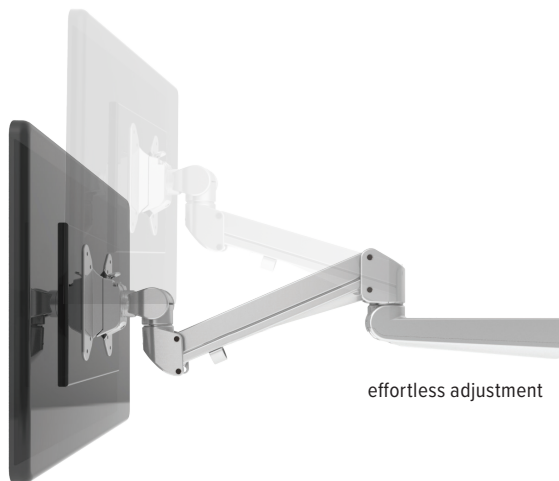


## Evolve6-FMS

six fixed + motion + slider monitor arm

# Evolve6-FMS

six fixed + motion + slider monitor arm



effortless adjustment



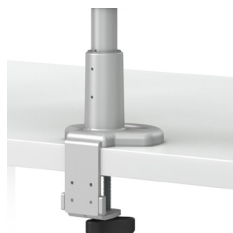
cable management



landscape/portrait rotation



grommet mount



desk clamp



integrated allen key storage



VESA quick release

## Product specs

- Finger touch dynamic height adjustment
- Recommended for worksurfaces 24.0"–36.0" deep
- 28.8" outside arm extension
- 6.0" center arm extension
- 4.0" retraction
- +80°/-60° monitor tilt (*slider mount*)  
+45°/-25° monitor tilt (*standard mount*)
- ±90° VESA rotation
- 4.4 lbs.–15.4 lbs. weight capacity (*per arm*)
- 30.0" pole height
- VESA quick release
- 180° lock-out feature
- Desk clamp and grommet mount included
- 24.5" max. monitor width (*bezel measured left to right*)  
*Note: monitor height/weight might limit size*
- Patented slider design for exclusive ESI use
- Exceeds BIFMA x5.5 requirements
- Warranty: 15 yrs.



Model #	List price
<input type="radio"/> EVOLVE6-FMS-SLV	\$1,932
<input checked="" type="radio"/> EVOLVE6-FMS-BLK	\$1,932
<input type="radio"/> EVOLVE6-FMS-WHT	\$1,932

## Evolve monitor arm key

F - Fixed monitor arm

M - Motion monitor arm

S - Slider mount

## Evolve for every need

- As workstation needs change, so can the Evolve configurations. Additional components sold separately.
- Benching system mount(s) available.

Call our Customer Service Department for compatibility and pricing for custom configurations.

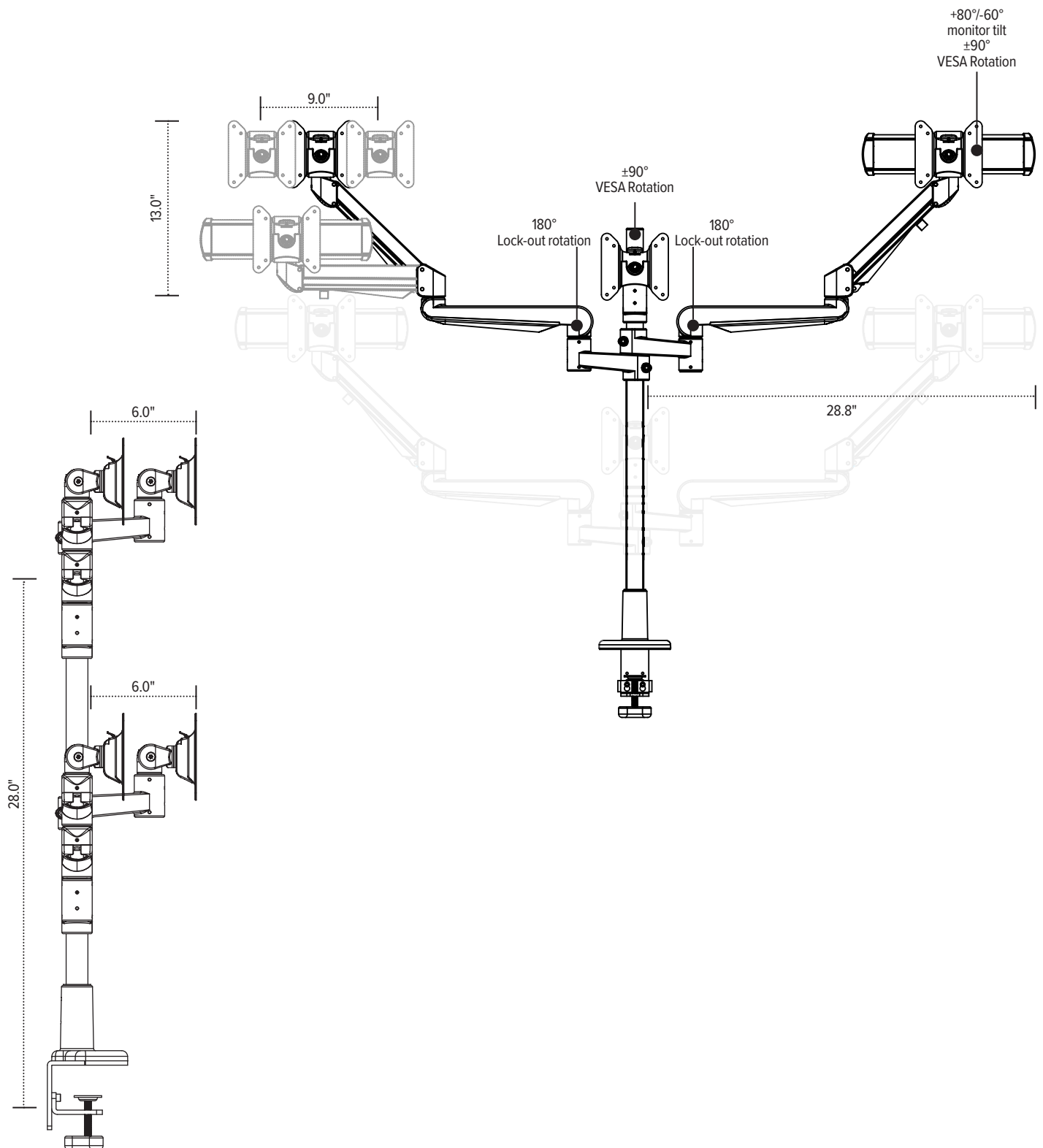
esi

800.833.3746  
esiergo.com



# Evolve6-FMS

six fixed + motion + slider monitor arm



esi

800.833.3746  
esiergo.com