



# Evolve1-FF

Single fixed + fixed monitor arm

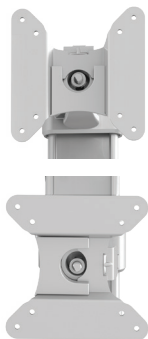
V34 - Pricing effective 3/1/2021

# Evolve1-FF

Single fixed + fixed monitor arm



cable management



landscape/portrait rotation



grommet mount



desk clamp



VESA quick release



integrated allen key storage

## Product specs

- Manual height adjustment
- Recommended for worksurfaces 36.0" deep or less
- 28.9" arm extension
- 4.1" arm retraction
- +90°/-25° monitor tilt
- ±90° VESA rotation
- Up to 20.0lb. weight capacity
- 18.0" pole height (includes base)
- VESA 75mm/100mm quick release
- 180° lock-out feature
- Desk clamp and grommet mount included
- Meets or exceeds BIFMA x5.5 and CSA CAN/CGSB44.227 guidelines
- Warranty: 15yr.



Model #	List price
<input type="radio"/> EVOLVE1-FF-SLV	\$392
<input checked="" type="radio"/> EVOLVE1-FF-BLK	\$392
<input type="radio"/> EVOLVE1-FF-WHT	\$392

## Evolve monitor arm key

F - Fixed monitor arm  
M - Motion monitor arm  
S - Slider mount

## Evolve for every need

- As workstation needs change, so can the Evolve configurations. Additional components sold separately
- Benching system mount(s) available

Call our Customer Service Department for compatibility and pricing for custom configurations.

# Evolve1-FF

Single fixed + fixed monitor arm

