

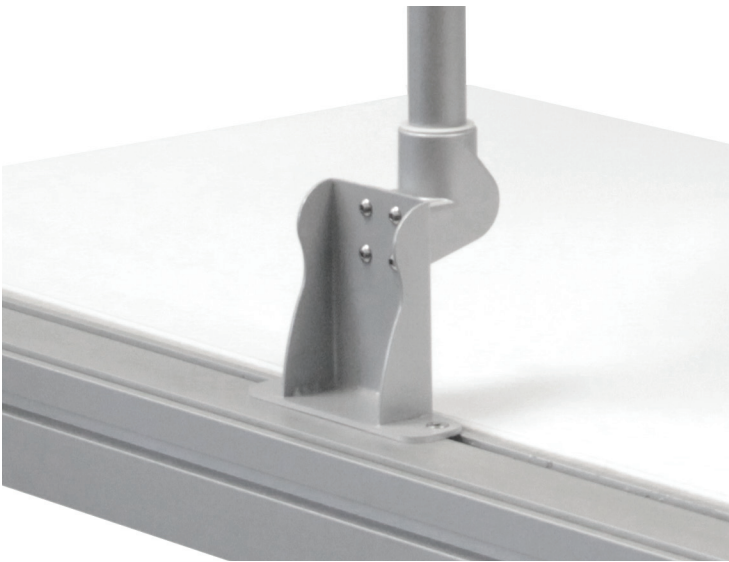


# Steelcase® Frameone Benching Mount

Monitor arm mount for use with Steelcase® Frameone table

# Steelcase® Frameone Benching Mount

Monitor arm mount for use with Steelcase® Frameone table



**Product specs**

- Designed to combine ESI monitor arms with the Steelcase Frameone benching table
- Compatible ESI monitor arms:
  - Evolve monitor arms: single, dual and triple configurations
  - Edge®: single configuration only
  - Kata™EX monitor arms: single, dual and triple configurations
- Holds up to three monitors
  - 15.4 lb. per slider mount arm
  - 17.6 lb. per VESA mount
- Fits easily on standard Edge®/Evolve/Kata™EX product nesting on base
- Pole sold separately
- Warranty: 15 yr.



Model #	List price
<input type="radio"/> E-FOMT-SLV	\$144

Benching mounts are not compatible with all benching systems. Monitor arms are not included with specialty benching mounts. Call our Customer Service Department for compatibility details. All trademarks are property of their respective owners.

# Steelcase® Frameone Benching Mount esi®

Monitor arm mount for use with Steelcase® Frameone table

