

esi



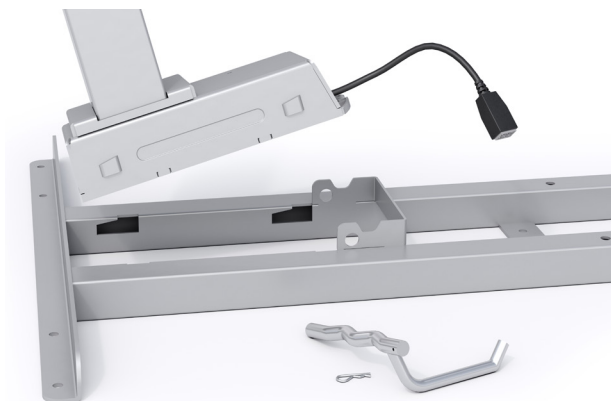
Triumph™ LX

Electric height adjustable table base

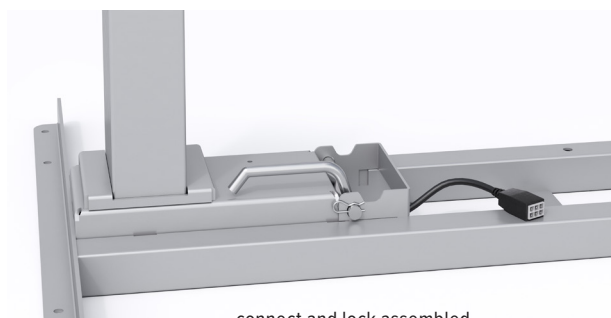
TriumphLX

Electric height adjustable table base

esi



connect and lock pre-assembly



connect and lock assembled



digital keypad



drawers easily slide over feet



locking casters

Product specs

- Electric height adjustment
- 220 lb. base lifting capacity
- 1.4"/sec. adjustment speed
- 17.0" height adjustment range
 - 26.5"–43.5"(low/high) (*excluding worksurface*)
- Two stage adjustable legs
- C-leg
- Frame and column connect and lock for quick and easy assembly
- Adjustable width frame accommodates worksurfaces 36.0"–72.0"
- Two motors
- Digital keypad with three memory settings
- Soft start and stop
- Gyro sensor anti-collision
- Locking casters are available
- ADA compliant
- 8'9" power cord
- Steel frame and foot construction
- Works with peds or storage with 23.5" max. height
- Low standby power consumption
- Meets or exceeds BIFMA x5.5 guidelines
- Keypad can slide under worksurface to store out of the way
- Complete tables available (*base and top*)
- Warranty: 15 yr. (*structural*)/7 yr. (*mechanical*)

Available base finishes

- ☐ Silver -SLV
- ☒ Black -BLK
- ☐ White -WHT

Caster Kit

- Set of four casters for table base
- Increases height by 2.0"
- Locking casters for security

Model # CASTERKIT-LX-2LEG **\$53**

TriumphLX

Electric height adjustable table base

esi

Complete table model # breakdown

2T__-R4824-T__
| | | | | | | |
a b c d e f g h

a: number of legs
b: type of table base
c: finish of base
d: worksurface shape
e: worksurface width
f: worksurface depth
g: laminate material
h: laminate color

48.0" x 24.0" quick ship complete table

- TriumphLX 2-leg table base with a 48.0"w x 24.0"d rectangle TFL worksurface

MODEL # 2T__-R4824-T__ **\$1,193**

60.0" x 30.0" quick ship complete table

- TriumphLX 2-leg table base with a 60.0"w x 30.0"d rectangle TFL worksurface

MODEL # 2T__-R6030-T__ **\$1,293**

base finish notation

laminate color notation

Available base finishes

☐ Silver -S

☐ Black -B

☐ White -W

Available TFL quick ship laminates

☐ Beigewood -BG

☐ Phantom Charcoal -PC

☐ Shadow Oak -SO

☐ Designer White -DW

☐ Grey -GR

☐ Dove Grey -DV

TriumphLX table

Quick ship complete table options include: silver, black, or white table bases; 48.0"w x 24.0"d or 60.0"w x 30.0"d rectangle worksurfaces; all six TFL laminates. Quick ship worksurfaces will be pre-drilled to accommodate the TriumphLX table base. For all other combinations, please call our Customer Service Department for the estimated lead time and cost.

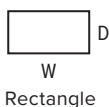
Multiple worksurface shapes and laminates are available. See Complete Table and Worksurface Guide for worksurface details including laminate colors.

TriumphLX

Electric height adjustable table base

esi

Table bases			Available worksurfaces				
Table base model	List price	Worksurface shape	Worksurface dimension	TFL standard		HPL standard	HPL premium
				Quick ship	Standard ship	Standard ship	Standard ship
2T-LX-C36-24-___	\$943		36"w x 24"d	—	2R3624-TFL-__ \$195	2R3624-HPL-__ \$273	2R3624-PHPL-__ \$298
			42"w x 24"d	—	2R4224-TFL-__ \$220	2R4224-HPL-__ \$315	2R4224-PHPL-__ \$343
			48"w x 24"d	2R4824-QS-TFL-__ \$250	2R4824-TFL-__ \$250	2R4824-HPL-__ \$350	2R4824-PHPL-__ \$382
2T-LX-C48-24-___	\$943	<div><div></div><div>D</div><div>W</div><div>Rectangle</div></div>	60"w x 24"d	—	2R6024-TFL-__ \$300	2R6024-HPL-__ \$420	2R6024-PHPL-__ \$458
			72"w x 24"d	—	2R7224-TFL-__ \$375	2R7224-HPL-__ \$460	2R7224-PHPL-__ \$501
			36"w x 30"d	—	2R3630-TFL-__ \$210	2R3630-HPL-__ \$300	2R3630-PHPL-__ \$327
2T-LX-C36-30-___	\$943		42"w x 30"d	—	2R4230-TFL-__ \$230	2R4230-HPL-__ \$330	2R4230-PHPL-__ \$360
			48"w x 30"d	—	2R4830-TFL-__ \$275	2R4830-HPL-__ \$380	2R4830-PHPL-__ \$414
			60"w x 30"d	2R6030-QS-TFL-__ \$350	2R6030-TFL-__ \$350	2R6030-HPL-__ \$440	2R6030-PHPL-__ \$480
2T-LX-C48-30-__	\$943		72"w x 30"d	—	2R7230-TFL-__ \$400	2R7230-HPL-__ \$480	2R7230-PHPL-__ \$523



Worksurface Program

Multiple worksurface shapes and laminates are available. See the Complete Table & Worksurface Ordering Guide for worksurface details including pricing and laminate colors. TFL quick ship worksurfaces are shipped out in 48 hours, TFL standard and HPL standard/premium worksurfaces ship within three weeks. Lead time may vary depending on quantities ordered and their availability.

Table bases and worksurfaces can be purchased independently or as a combination.

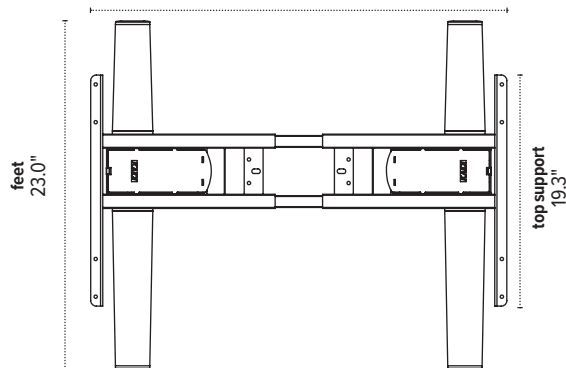
ESI worksurfaces are made to exact dimensions. If nominal sizing is needed, please specify when ordering.

TriumphLX

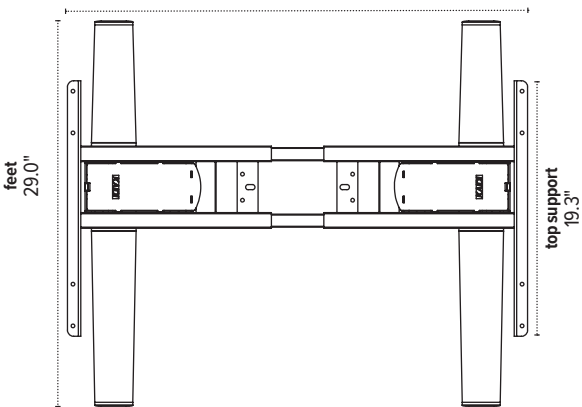
Electric height adjustable table base



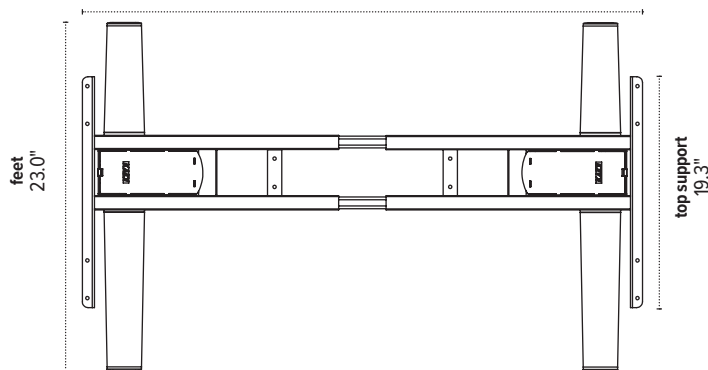
2T-LX-C36-24
adjustable width
30.6"–47.5"



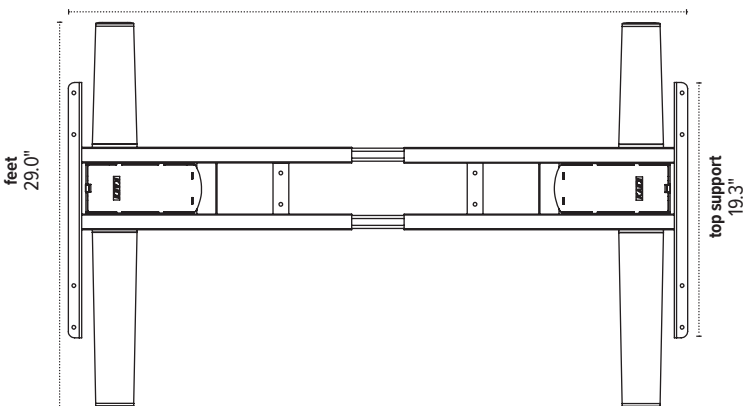
2T-LX-C36-30
adjustable width
30.6"–47.5"



2T-LX-C48-24
adjustable width
42.5"–71.5"



2T-LX-C48-30
adjustable width
42.5"–71.5"



The base dimensions as shown are actual.