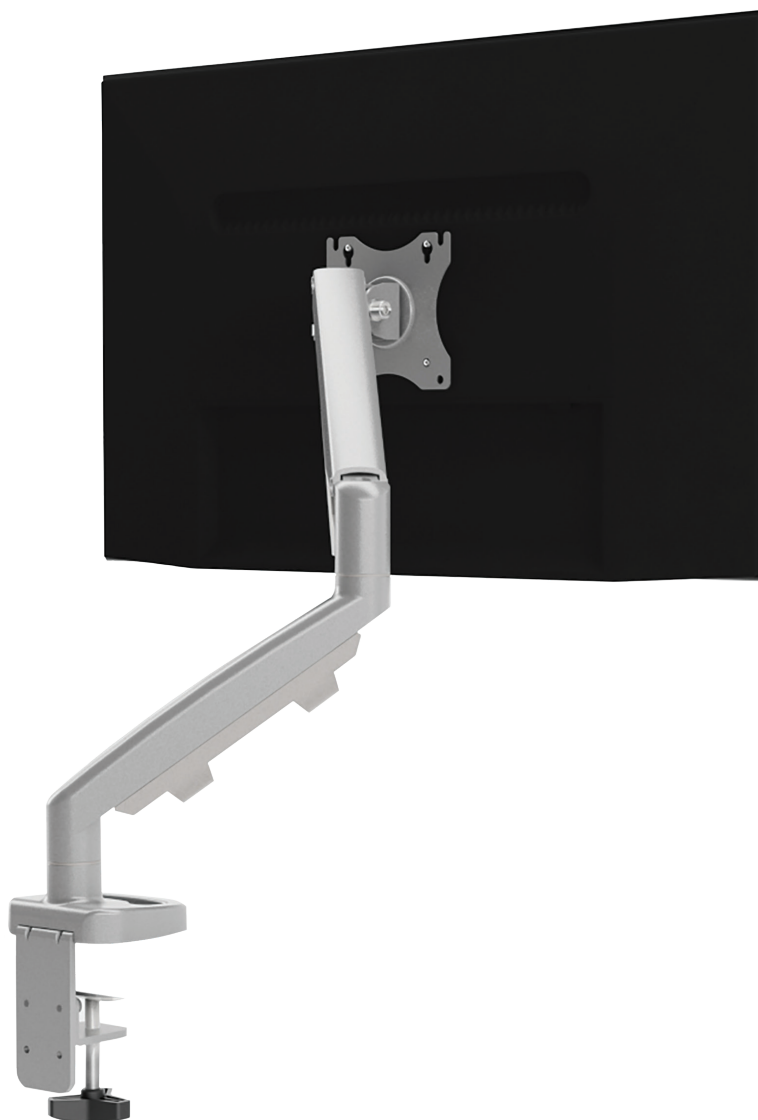


esi



Eppa™
Single monitor arm

Eppa

Single monitor arm

esi



Monitors can pivot from portrait to landscape orientation easily.
Arms have wide range of motion.



VESA mounts tilt up and down,
providing a flat writing surface
for touch screen monitors



Clip-on tool storage

Product specs

- Finger touch dynamic height adjustment
- Recommended for worksurfaces 36.0" deep or less
- 10.5" height adjustment range
 - 5.5"–16.0" (low/high)
- 20.0" arm extension
- 4.0" arm retraction
- +90°/-25° monitor tilt
- ±90° VESA rotation
- ±90° monitor swivel stop
- 2.2 lb.–17.6 lb. weight capacity
- VESA 75mm/100mm quick mount
- Desk clamp and grommet mount included
- Fixed and motion arms included
- Capable to swivel between portrait and landscape orientation
- Meets or exceeds BIFMA x5.5 and CSA CAN/CGSB44.227 guidelines
- Aluminum and steel design
- Partially assembled for quick installation
- Integrated cord management
- Grommet hole integrated in base to easily route cables
- Clip-on tool holder attaches to base bracket keeping hex keys accessible
- Warranty: 10 yr.

Model

List price

○ EPPA-SLV	\$225
------------	-------

Conversion

Reuse most of the parts in your single Eppa arm when you convert up to the Eppa2 with our simple kit.
Conversion kit sold separately

Eppa

Single monitor arm

