

# Evolve Conversion Kit

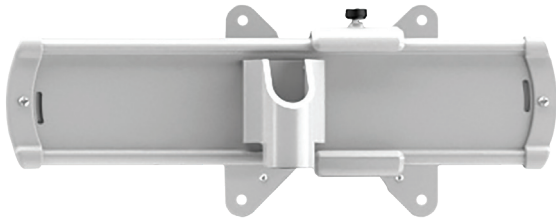
Evolve1-MS to Evolve2-MS monitor arm conversion kit



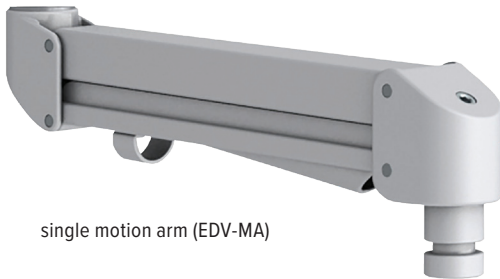
# Evolve Conversion Kit



Evolve1-MS to Evolve2-MS monitor arm conversion kit



slider (EDV-SLD)



single motion arm (EDV-MA)



arm stem (EDV-STEM)

## Product specs

Converts an Evolve1-MS single monitor arm to an Evolve2-MS dual monitor arm

- Kit includes
  - One slider
  - One single motion arm
  - One arm stem
- Recommended for worksurfaces 30.0" deep or less
- 21.2" arm extension
- 6.7" arm retraction
- +80°/-60° monitor tilt (*slider mount*)
- ±90° VESA rotation
- 4.4 lb.–15.4 lb. weight capacity (*per arm*)
- 18.0" pole height (*includes base*)
- VESA 75mm/100mm quick release
- 180° lock-out feature
- 32.0" max. monitor width  
*Bezel measured left to right.*  
*Max. width is contingent on weight capacity.*
- Slider provides 8.5" of additional horizontal adjustability
- Patented slider design for exclusive ESI use
- Warranty: 15 yr.



Model #	List price
<input type="radio"/> EVOLVEKIT-1MS2MS-SLV	\$352
<input checked="" type="radio"/> EVOLVEKIT-1MS2MS-BLK	\$352
<input type="radio"/> EVOLVEKIT-1MS2MS-WHT	\$352

# Evolve Conversion Kit

esi

Evolve1-MS to Evolve2-MS monitor arm conversion kit

