



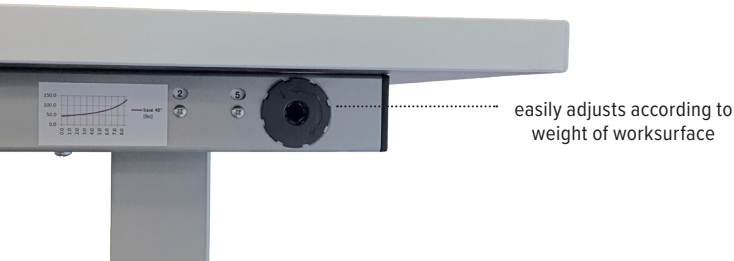
# Weight Adjustable Espree™

pneumatic table base

# Weight Adjustable Espree

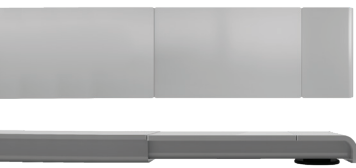
pneumatic table base

weight resistance gauge



easily adjusts according to weight of worksurface

foot at 28.0"



foot at 22.0"



With no power needed, it is both environmentally friendly and easy to retrofit any space with power limitations

## Product specs

- Pneumatic height adjustment
- 20.0" height adjustment range
  - 26.0"–46.0" (low/high)  
*(excluding worksurface)*
- 44–143 lbs. base lifting capacity (2ESP-WA-C48)
- 52–163 lbs. base lifting capacity (2ESP-WA-C60)
- Two-stage adjustable legs
- Foot is adjustable to 22.0" or 28.0"  
*(patented design)*
- Fixed width frame
- Locking casters are available
- Table bases accommodate worksurfaces measuring 48.0" and 60.0" in width
- Base includes weight resistance setting gauge
- The user has the ability to change the weight resistance in the base for easy height adjustment
- Counter-balanced columns provide smooth, synchronized height adjustment
- The weight adjustment cylinder includes preventative hard stop
- Warranty: 15yrs. structural / 7yrs. mechanical



locking casters

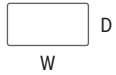
esi

800.833.3746  
esiergo.com

# Weight Adjustable Espree

pneumatic table base

## Rectangle



Dimensions	Base model	Surface model
48"w x 24"d	2ESP-WA-C48-___	2R4824__
48"w x 30"d	2ESP-WA-C48-___	2R4830__
60"w x 24"d	2ESP-WA-C60-___	2R6024__
60"w x 30"d	2ESP-WA-C60-___	2R6030__

## D-top



Dimensions	Base model	Surface model
60"w x 30"d	2ESP-WA-C60-___	D6030__

Table bases can be purchased independently or combined with a worksurface. Worksurfaces can only be purchased with a table base. See our worksurface ordering guide for details. ESI worksurfaces are made to exact dimensions. If nominal sizing is needed, please specify when ordering.

## Caster Kit

- Set of caster wheels for table bases
- Increases height by 2.0"
- Locking wheels for security

MODEL # CASTERKIT-2ESP-WA

## Available base finishes

- ☐ Silver -SLV
- ☒ Black -BLK
- ☐ White -WHT

LT=CALL FOR ON HAND AVAILABILITY

## Worksurface shapes - LT

Multiple worksurface shapes are available. See chart to the left for full list. Worksurfaces can be come in a variety of laminates.

## Edge Detail

Worksurfaces ship with a standard square profile edge and coordinating 3mm edge band. Additional edge detail profiles are available at an additional cost.



esi

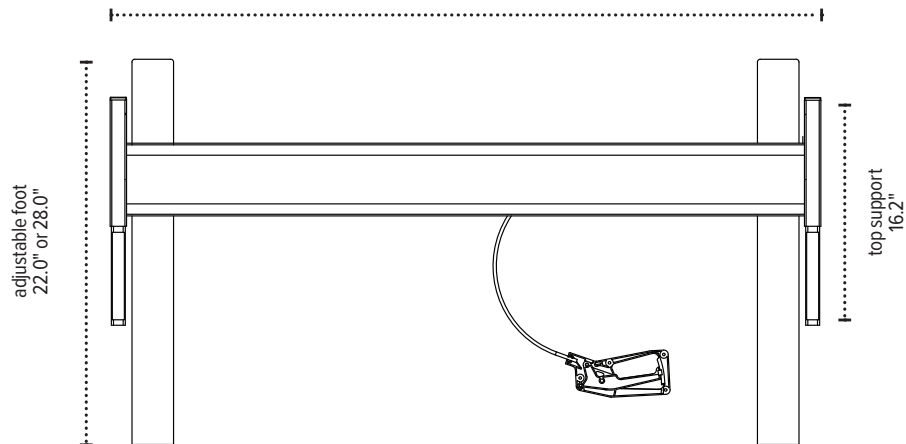
800.833.3746  
esiergo.com

# Weight Adjustable Espree

pneumatic table base

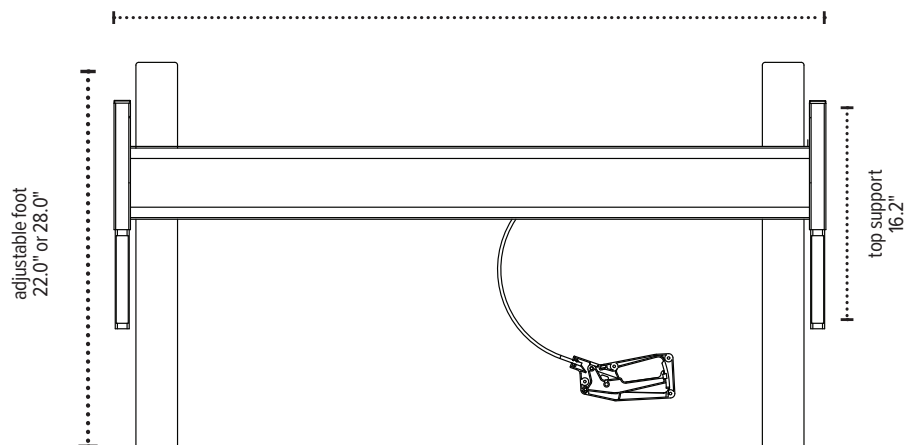
**2ESP-WA-C48**

fixed width  
44.0"



**2ESP-WA-C60**

fixed width  
56.0"



The base dimensions as shown are actual.

**esi**

800.833.3746  
esiergo.com

© 2019 Fellowes, Inc.