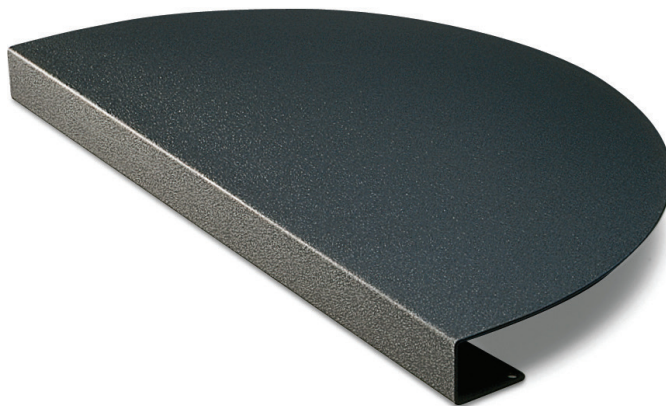


CORNER DIAGONAL WORK SURFACE ACCESSORY

Converts 90° corners to diagonal corners for additional work area and moves the user closer to the worksurface.

- Includes spacers and felt furniture protectors
- Accommodates surfaces up to 1.375" thick



MODEL #

- | | |
|------------------------|---------------------------------------|
| ● ACCD90-17-BLK | FOR USE ON CORNERS LESS THAN 17" WIDE |
| ● ACCD90-21-BLK | FOR USE ON CORNERS LESS THAN 21" WIDE |

