



esi®



SendTM EX2-MS

Dual motion + slider monitor arm

Sena™ EX2-MS

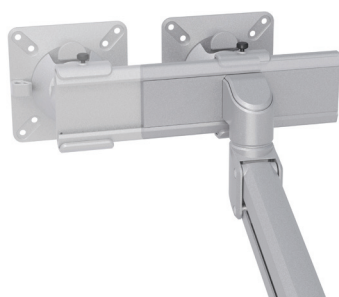
Dual motion + slider monitor arm



grommet mount



desk clamp



slider mount

Product specs

- Finger touch dynamic height adjustment
- Recommended for worksurfaces 30" deep or less
- 12.68" height adjustment range
- 17.11" arm extension
- 4.74" arm retraction
- +/-60° monitor tilt
- +/-90° VESA rotation
- 2.2lb. - 19.8lb weight capacity (per arm)
- 7.87" pole height (includes base)
- VESA 75mm/100mm quick release
- 180° lock-out feature
- 270° / 135° arm rotation with 180° lock out
- 36.14" max monitor width
 - Bezel measured left to right
 - Max width is contingent on weight capacity
- Desk clamp and grommet mount included
- Meets or exceeds BIFMA x5.5 and CSA CAN/CGSB44.227 guidelines
- Warranty: 15 yr

Model

- ☐ SENAEX2-MS-SLV
- ☒ SENAEX2-MS-BLK
- ☐ SENAEX2-MS-WHT

SenaEX monitor arm key

- F - Fixed monitor arm
- M - Motion monitor arm
- S - Slider mount

Available mounting options

- DC - Desk clamp
- GM - Grommet mount

SenaEX for every need

- As workstation needs change, so can the SenaEX configurations. Additional components sold separately

Call our Customer Service Department for pricing for custom configurations.

Dual motion + slider monitor arm

800.833.3746
esiergo.com

Fellowes | FAMILY BUSINESS
Brands. SINCE 1917
© 2022 Fellowes, Inc.

