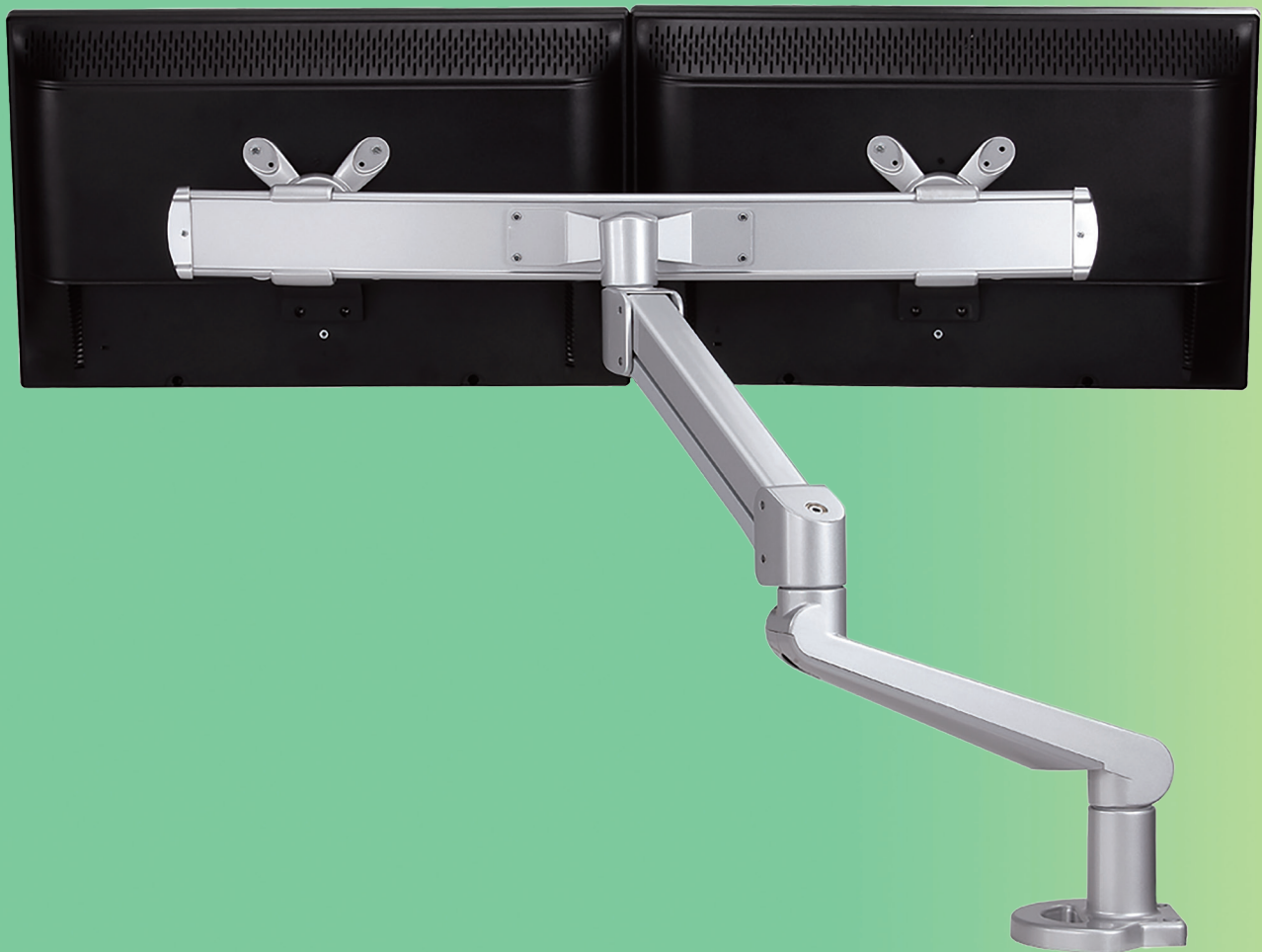


esi | work gear



Edge2-Max<sup>®</sup>

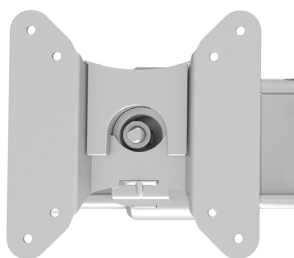
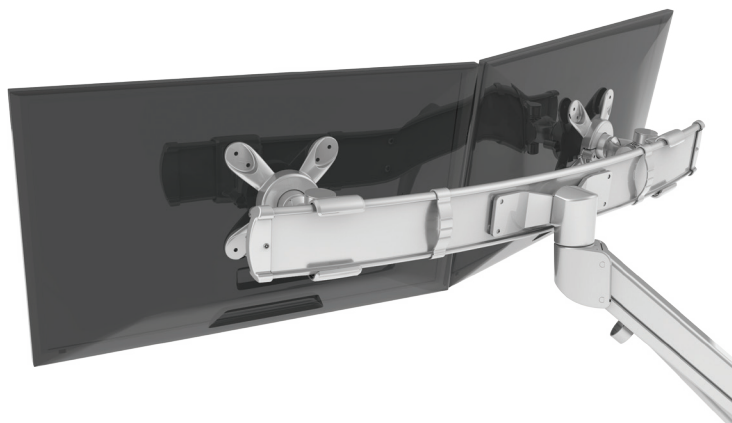
heavy duty dual monitor arm

**Fellowes**  
Brands.

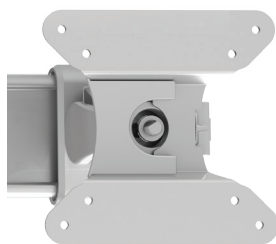
FAMILY BUSINESS  
SINCE 1917

# Edge2-Max

heavy duty dual monitor arm



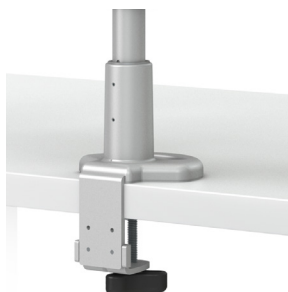
landscape rotation



portrait rotation



grommet mount



desk clamp

## Product specs

- Finger touch dynamic height adjustment
- Weight capacity counterbalanced for heavy monitors and all-in-one computers
- Recommended for worksurfaces 30.0" deep or less
- 14.0" height adjustment range
  - 9.0"–23.0" (low/high)
- 26.6" arm extension
- 6.5" arm retraction
- $\pm 55^\circ$  monitor tilt
- $\pm 90^\circ$  VESA rotation
- 12.0 lbs.–38.5 lbs. weight capacity  
(combined weight of both monitors)
- 30.3" total width of crossbar
- 180° lock-out feature
- 360° rotation at two points
- Exceeds BIFMA x5.5 requirements
- Desk clamp and grommet mount included
- 24.0" max. monitor width  
(bezel measured left to right)
- Warranty: 15 yr.



## Model #

## List price

○ EDGE2-MAX-SLV

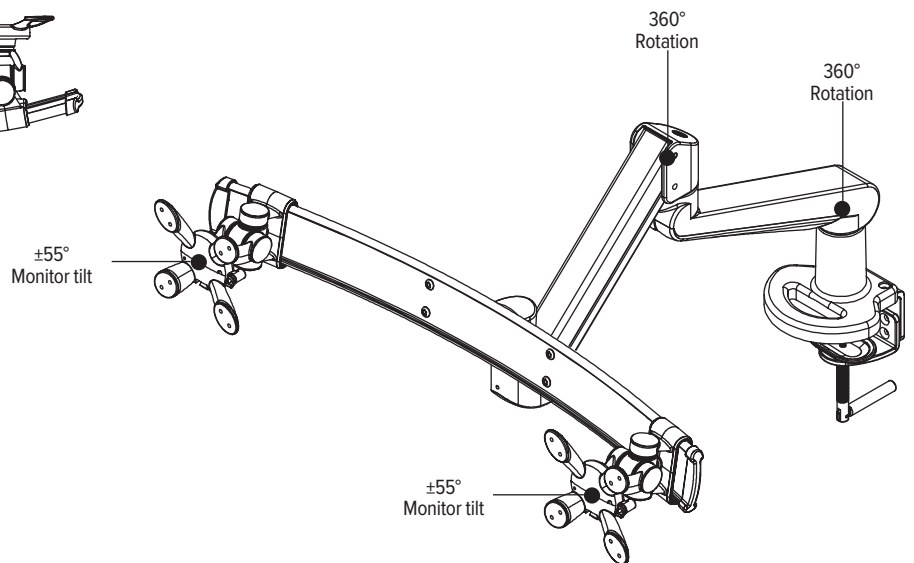
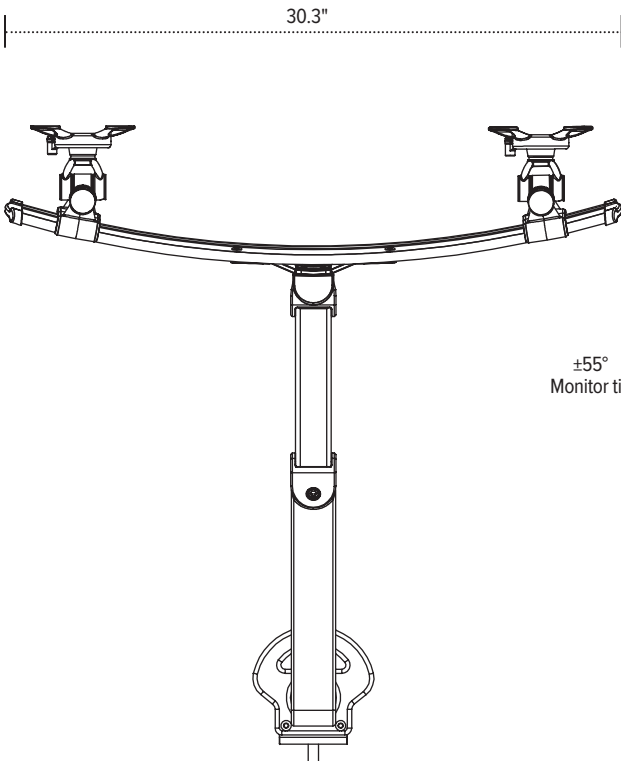
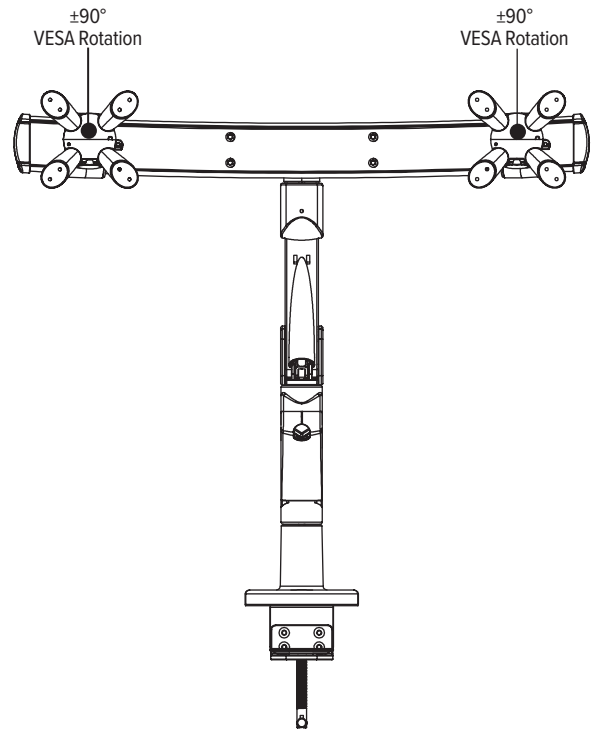
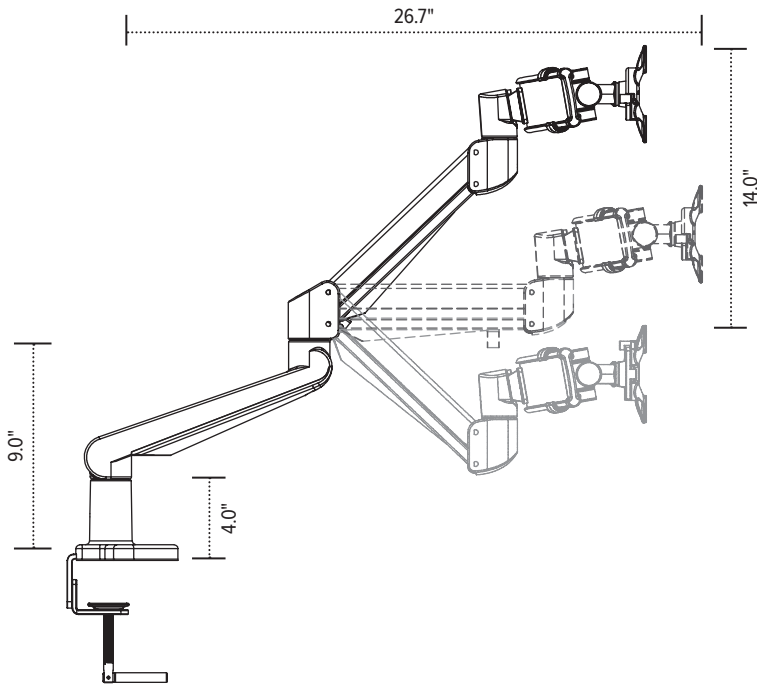
\$723

esi

800.833.3746  
esiergo.com

# Edge2-Max

heavy dual monitor arm



esi

800.833.3746  
esiergo.com