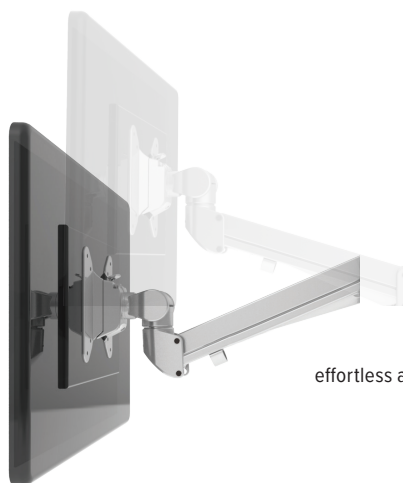


Evolve1-M

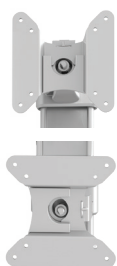
single motion monitor arm



effortless adjustment



cable management



landscape/portrait rotation



grommet mount



desk clamp



integrated allen key storage



VESA quick release

Product specs

- Finger touch dynamic height adjustment
- Recommended for worksurfaces 24.0"–30.0" deep
- 16.3" arm extension
- 4.0" arm retraction
- +90°/-25° monitor tilt
- ±90° VESA rotation
- 6.5 lbs.–17.6 lbs. weight capacity
- 18.0" pole height
- VESA quick release
- 180° lock-out feature
- Desk clamp and grommet mount included
- Exceeds BIFMA x5.5 requirements
- Warranty: 15 yr.



Model

List price

<input type="radio"/> EVOLVE1-M-SLV	\$389
<input checked="" type="radio"/> EVOLVE1-M-BLK	\$389
<input type="radio"/> EVOLVE1-M-WHT	\$389

Evolve monitor arm key

F - Fixed monitor arm

M - Motion monitor arm

S - Slider mount

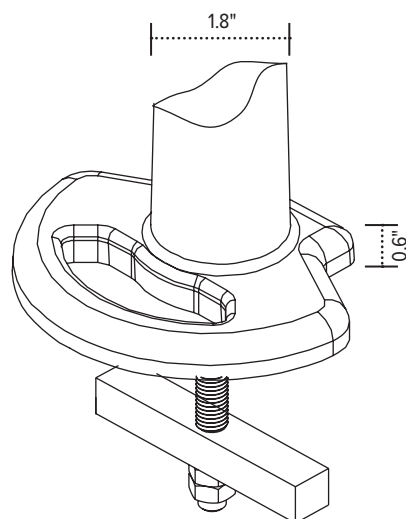
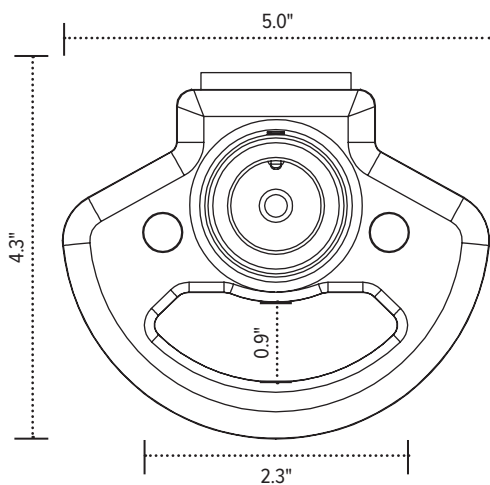
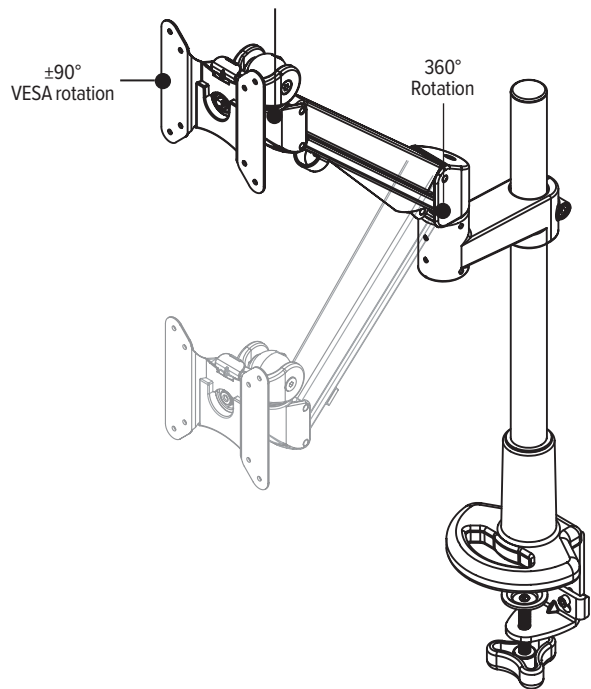
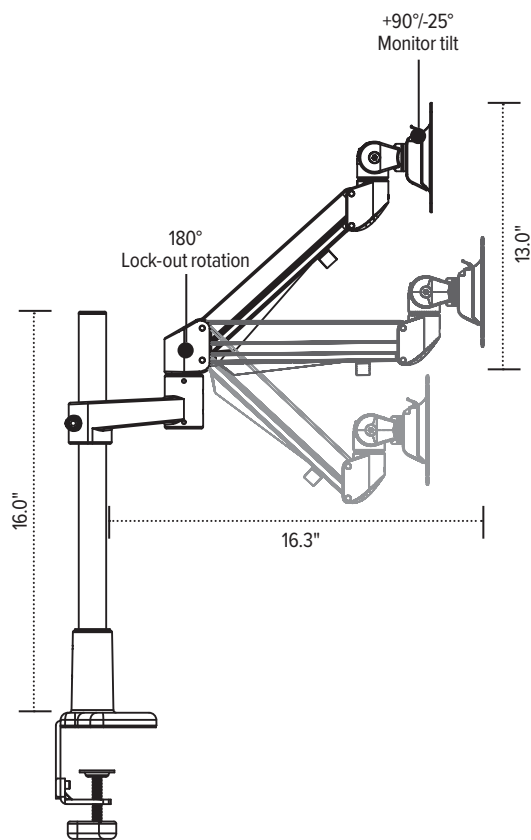
Evolve for every need

- As workstation needs change, so can the Evolve configurations. Additional components sold separately
- Benching system mount(s) available

Call our Customer Service Department for compatibility and pricing for custom configurations.

Evolve1-M

single motion monitor arm



esi

800.833.3746
esiergo.com