

SPACER KIT

GLIDE TRACK ACCESSORY

Ideal for Height adjustable tables and Benching systems, the Spacer-Kit creates a flat mounting surface for keyboard arms and glide tracks where cross channels typically prevent installations.

- Compatible with most ESI keyboard arms and glide tracks*
- Attaches between underside of work surface and a keyboard arm or glide track
- Includes mounts for benching systems and Height adjustable tables
- Powder coated steel construction
- 2 sets of spacers included to accommodate needed spacing between 1" - 2.2"
- Includes installation hardware



MODEL #

V29 LIST PRICE

SPACERKIT-KBD**\$64**

*NOT COMPATIBLE WITH CPULOCK



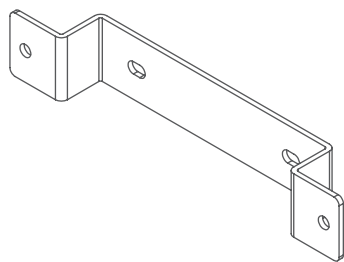
© 2017 ESI Ergonomic Solutions. All Rights Reserved.

esiergo.com | 800.833.3746

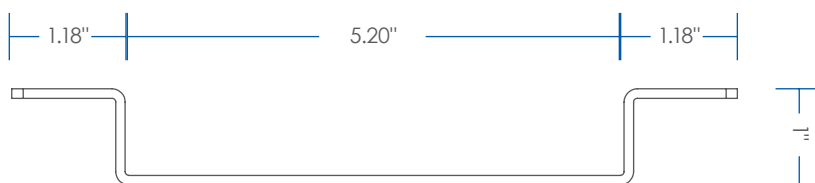
 GSA Contract Holder • 2020 CAP & GIZA
 Project Spec • IceEdge • Sketch-Up

SPACERKIT

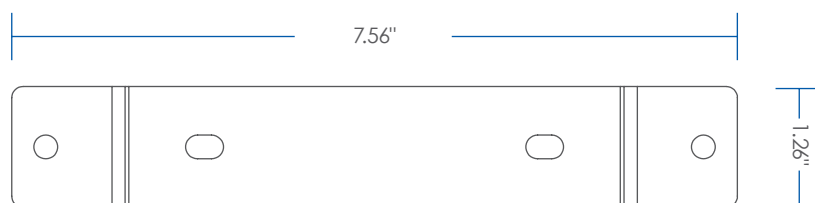
INNER BRACKET



SIDE

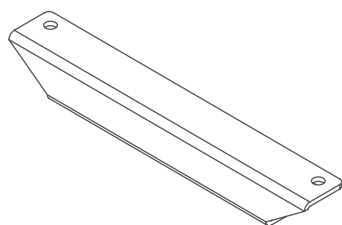


TOP

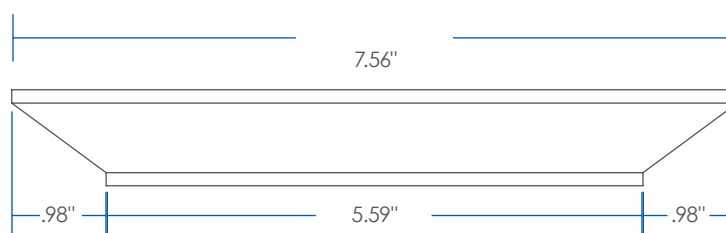


SPACERKIT

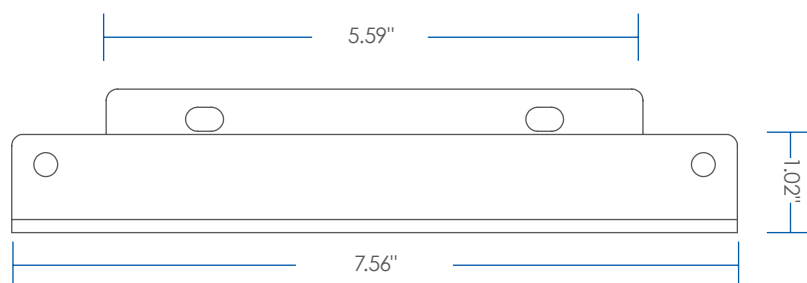
FRONT BRACKET



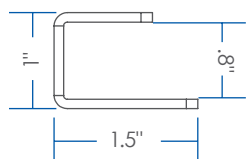
FRONT



TOP



SIDE



BOTTOM

