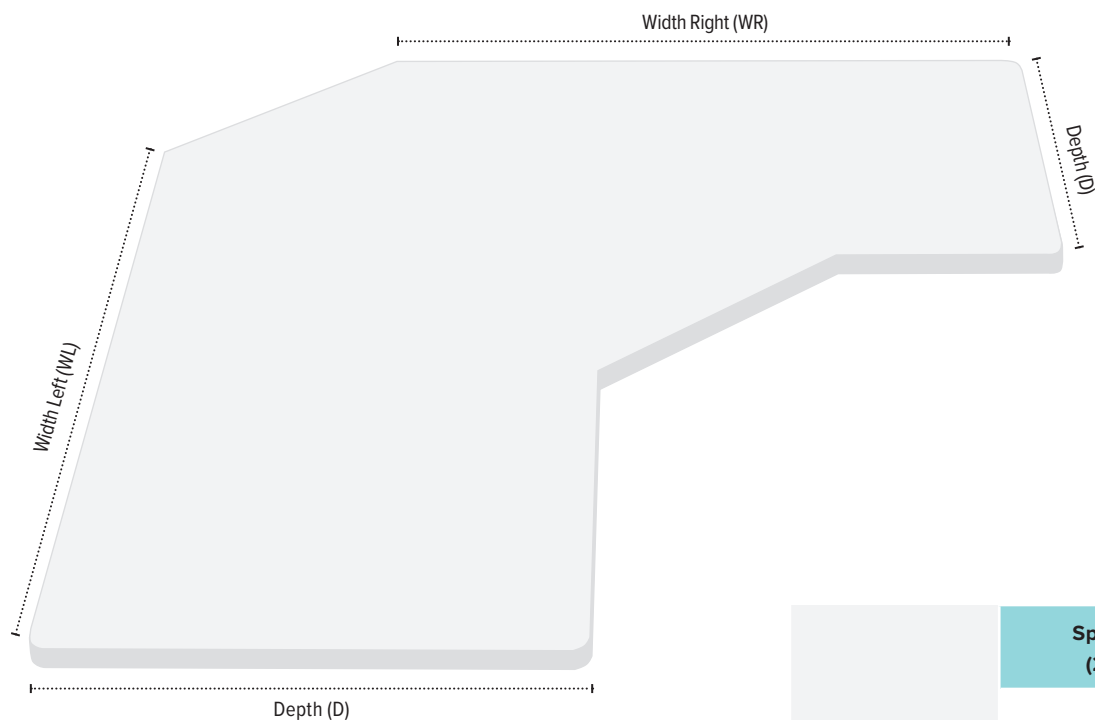


LT=Call for on-hand availability



Dimensions			Specify laminate (2 letter code)		Compatible table bases (As indicated by the • )								
			Model #	Standard Price	Triumph-LX	Victory-LX 2-leg	Victory-LX 3-leg	All-Flex 2-leg	All-Flex 3-le	Premium 2-leg	Premium 3-leg	Q Crank	Espree
WL	WR	D											
60	60	24	3EC606024__	\$1,164			•		•		•		
72	72	24	3EC727224__	\$2,386			•		•		•		
84	84	24	3EC848424__	\$2,477			•		•		•		
60	60	30	3EC606030__	\$1,164			•		•		•		
72	72	30	3EC727230__	\$2,386			•		•		•		
84	84	30	3EC848430__	\$2,477			•		•		•		

Standard price of worksurface includes standard laminate choice with square edge profile and coordinating edge band.  
Please contact the Customer Service department for pricing on non-standard profiles and laminates

## Standard Laminates

### Standard worksurfaces - LT

Typical lead time is 10-14 business days for production of worksurfaces. Please indicate laminate choice by adding the 2-letter code at the end of the worksurface model number. Worksurfaces are not sold separately and must be purchased with a table base.

Warranty: 5 yr.

### Standard laminate options

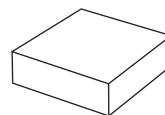
Worksurfaces are available in 38 standard Wilsonart® laminate options and 3 standard Formica® laminate options. Additional non-standard laminate options are available from Formica®, Nevamar®, Pionite®, and more. Call our Customer Service Department for more information.

### Non-standard edge detail

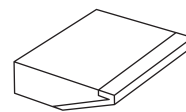
For information on additional edge detail options including 3mm knife edge and urethane (urethane available in square edge, knife edge, bullnose, or ergo edge), contact our Customer Service Department for model numbers and pricing.

Standard price of worksurface includes standard square edge profile and coordinating 3MM Edge Band. Alternative edge detail options are available in urethane edge bands only.

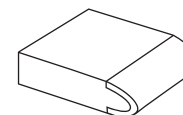
Call our Customer Service Department for more information.



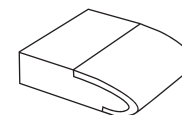
Square edge



Knife edge



Bullnose edge



Ergo edge

### EXAMPLE: How to specify your standard worksurface

1. Pick your worksurface and size  
(required)

3EC606024-TT

2. Pick your laminate finish  
(required)

3EC606024-TT

This product number represents:  
Large equal corner worksurface  
60.0" wide  
24.0" deep  
Wilsonart Titanium ev laminate

## Standard Laminates

Laminate images are not ideal representations of the laminate product. ESI highly recommends requesting samples from the laminate manufacturer prior to purchase.

More laminate options are available. Please contact our Customer Service Department for more information.

### Woodgrains



Color code: **AH**  
Color name: Acajou mahogany  
Finish: Matte  
3mm edge band color: Classic mahogany  
Manufacturer: Formica



Color code: **BE**  
Color name: Beigewood  
Finish: Matte  
3mm edge band color: Jute  
Manufacturer: Wilsonart



Color code: **BW**  
Color name: Brighton walnut  
Finish: Fine velvet  
3mm edge band color: Imperial walnut  
Manufacturer: Wilsonart



Color code: **CO**  
Color name: Castle oak  
Finish: Fine velvet  
3mm edge band color: Castle walnut  
Manufacturer: Wilsonart



Color code: **FM**  
Color name: Fusion maple  
Finish: Matte  
3mm edge band color: Norway maple  
Manufacturer: Wilsonart



Color code: **KM**  
Color name: Kensington maple  
Finish: Matte  
3mm edge band color: Sugar maple  
Manufacturer: Wilsonart



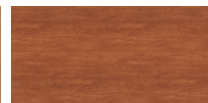
Color code: **MM**  
Color name: Monticello maple  
Finish: Fine velvet  
3mm edge band color: Candlelight maple  
Manufacturer: Wilsonart



Color code: **SC**  
Color name: Shaker cherry  
Finish: Matte  
3mm edge band color: Kodiak brown  
Manufacturer: Wilsonart

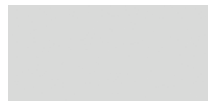


Color code: **SO**  
Color name: Solar oak  
Finish: Matte  
3mm edge band color: Castle walnut  
Manufacturer: Wilsonart

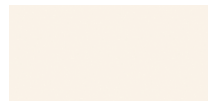


Color code: **WC**  
Color name: Wild cherry  
Finish: Matte  
3mm edge band color: Rainier cherry  
Manufacturer: Wilsonart

### Solids



Color code: **FS**  
Color name: Folkstone  
Finish: Matte  
3mm edge band color: Folkstone  
Manufacturer: Formica



Color code: **AW**  
Color name: Antique white  
Finish: Matte  
3mm edge band color: White sand  
Manufacturer: Wilsonart



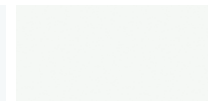
Color code: **BK**  
Color name: Black  
Finish: Matte  
3mm edge band color: Black gray  
Manufacturer: Wilsonart



Color code: **DG**  
Color name: Dove grey  
Finish: Matte  
3mm edge band color: Dove gray  
Manufacturer: Wilsonart



Color code: **DW**  
Color name: Designer white  
Finish: Matte  
3mm edge band color: Designer white  
Manufacturer: Wilsonart



Color code: **FW**  
Color name: Frosty white  
Finish: Matte  
3mm edge band color: Frosty white  
Manufacturer: Wilsonart



Color code: **NS**  
Color name: North sea  
Finish: Matte  
3mm edge band color: Shaker gray  
Manufacturer: Wilsonart



Color code: **PE**  
Color name: Pepperdust  
Finish: Matte  
3mm edge band color: Pepperdust  
Manufacturer: Wilsonart



Color code: **WS**  
Color name: White sand  
Finish: Matte  
3mm edge band color: White sand  
Manufacturer: Wilsonart

## Standard Laminates

Laminate images are not ideal representations of the laminate product. ESI highly recommends requesting samples from the laminate manufacturer prior to purchase.

More laminate options are available. Please contact our Customer Service Department for more information.

### Patterns



Color code: **FG**  
Color name: Folkstone grafix  
Finish: Matte  
3mm edge band color: Folkstone  
Manufacturer: Formica



Color code: **CN**  
Color name: Cloud nebula  
Finish: Matte  
3mm edge band color: Anchor gray  
Manufacturer: Wilsonart



Color code: **CZ**  
Color name: Canyon zephyr  
Finish: Matte  
3mm edge band color: Dove gray  
Manufacturer: Wilsonart



Color code: **DZ**  
Color name: Desert zephyr  
Finish: Matte  
3mm edge band color: Jute  
Manufacturer: Wilsonart



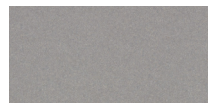
Color code: **GM**  
Color name: Grey mesh  
Finish: Fine velvet  
3mm edge band color: Pepperdust  
Manufacturer: Wilsonart



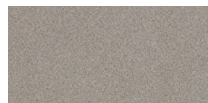
Color code: **GN**  
Color name: Grey nebula  
Finish: Matte  
3mm edge band color: Summer rain  
Manufacturer: Wilsonart



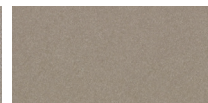
Color code: **LZ**  
Color name: Cloud zephyr  
Finish: Matte  
3mm edge band color: Jute  
Manufacturer: Wilsonart



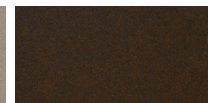
Color code: **MZ**  
Color name: Misted zephyr  
Finish: Matte  
3mm edge band color: Dolphin  
Manufacturer: Wilsonart



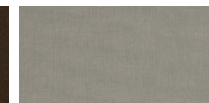
Color code: **NK**  
Color name: Nickel ev  
Finish: Matte  
3mm edge band color: Anchor gray  
Manufacturer: Wilsonart



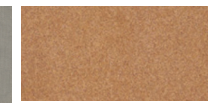
Color code: **NZ**  
Color name: Loden zephyr  
Finish: Matte  
3mm edge band color: Safari sage  
Manufacturer: Wilsonart



Color code: **OZ**  
Color name: Morro zephyr  
Finish: Matte  
3mm edge band color: French roast  
Manufacturer: Wilsonart



Color code: **PM**  
Color name: Pewter mesh  
Finish: Fine velvet  
3mm edge band color: Cinder  
Manufacturer: Wilsonart



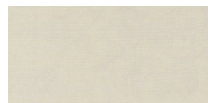
Color code: **PZ**  
Color name: Spiced zephyr  
Finish: Matte  
3mm edge band color: Black  
Manufacturer: Wilsonart



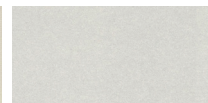
Color code: **RN**  
Color name: Graphite nebula  
Finish: Matte  
3mm edge band color: Black  
Manufacturer: Wilsonart



Color code: **SI**  
Color name: Silicon ev  
Finish: Matte  
3mm edge band color: Brownstone  
Manufacturer: Wilsonart



Color code: **SM**  
Color name: Sheer mesh  
Finish: Fine velvet  
3mm edge band color: White sand  
Manufacturer: Wilsonart



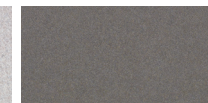
Color code: **SZ**  
Color name: Shadow zephyr  
Finish: Matte  
3mm edge band color: Folkstone  
Manufacturer: Wilsonart



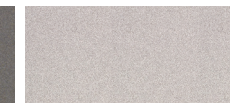
Color code: **TG**  
Color name: Tungsten ev  
Finish: Matte  
3mm edge band color: Jute  
Manufacturer: Wilsonart



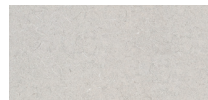
Color code: **TT**  
Color name: Titanium ev  
Finish: Matte  
3mm edge band color: Folkstone  
Manufacturer: Wilsonart



Color code: **TZ**  
Color name: Twilight zephyr  
Finish: Matte  
3mm edge band color: Cinder  
Manufacturer: Wilsonart



Color code: **WN**  
Color name: White nebula  
Finish: Matte  
3mm edge band color: Folkstone  
Manufacturer: Wilsonart



Color code: **WT**  
Color name: White tigris  
Finish: Matte  
3mm edge band color: Shaker gray  
Manufacturer: Wilsonart

## Non-Standard Laminates Urethane Edge Options

### Standard worksurfaces - LT

Typical lead time is 10-14 business days for production of worksurfaces. Please indicate laminate choice by adding the 2-letter code at the end of the worksurface model number. Worksurfaces are not sold separately and must be purchased with a table base. Warranty: 5 yr.

### Urethane Laminate options

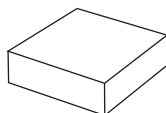
Worksurfaces are available in 131 standard laminate options and 3 standard Formica® laminate options. Additional non-standard laminate options are available from Formica®, Nevamar®, Pionite®, and more. Call our Customer Service Department for more information.

### Non-standard edge detail

For information on additional edge detail options including 3mm knife edge and urethane (urethane available in square edge, knife edge, bullnose, or ergo edge), contact our Customer Service Department for model numbers and pricing.

Standard price of worksurface includes standard square edge profile and coordinating 3MM Edge Band. Alternative edge detail options are available in urethane edge bands only.

Call our Customer Service Department for more information.



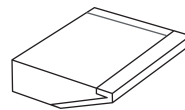
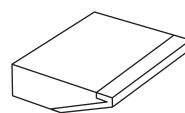
**Urethane Square Edge**

#### US-USE

Model # specifies urethane edge detail on **User Side** only

#### AS-USE

Model # specifies urethane edge detail on **All Sides** of worksurface



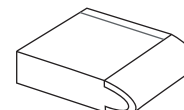
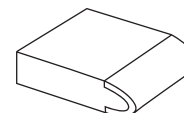
**Urethane Knife Edge**

#### US-UKE

Model # specifies urethane edge detail on **User Side** only

#### AS-UKE

Model # specifies urethane edge detail on **All Sides** of worksurface



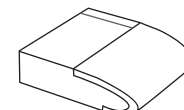
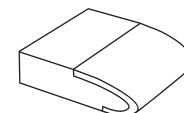
**Urethane Bullnose Edge**

#### US-UBE

Model # specifies urethane edge detail on **User Side** only

#### AS-UBE

Model # specifies urethane edge detail on **All Sides** of worksurface



**Urethane Ergo Edge**

#### US-UEE

Model # specifies urethane edge detail on **User Side** only

#### AS-UEE

Model # specifies urethane edge detail on **All Sides** of worksurface

### EXAMPLE: How to specify your non-standard worksurface

1. Pick your worksurface and size (required)

**3EC606024-KM**

2. Pick your laminate finish (required)

**3EC606024-KM**

3. Pick your edge detail (5-digit code) + laminate (3-digit code) (optional)

**3EC606024-KM-AS-UEE-329**

This product number represents:

Large equal corner worksurface  
60.0" wide  
24.0" deep  
Wilsonart Kensington Maple laminate  
Urethane Ergo Edge - All sides  
Sweet Maple

## Urethane Edge Colors

Laminate images are not ideal representations of the laminate product. ESI highly recommends requesting samples from the laminate manufacturer prior to purchase.

More laminate options are available. Please contact our Customer Service Department for more information.

- Matching vinyl edge available

### Vibrant colors



Color code: **323 ●**  
Color name: Atlantis



Color code: **360**  
Color name: Azul



Color code: **034**  
Color name: Blue Frost



Color code: **345**  
Color name: Blue Jay



Color code: **325**  
Color name: Cadet Blue



Color code: **074**  
Color name: Hula Blue



Color code: **351**  
Color name: Lake Geneva



Color code: **307**  
Color name: Shady Lane



Color code: **375**  
Color name: Sky



Color code: **328**  
Color name: Periwinkle



Color code: **076**  
Color name: Turquoise



Color code: **067**  
Color name: Victorian Teal



Color code: **015**  
Color name: Black Forest



Color code: **374**  
Color name: Mallard



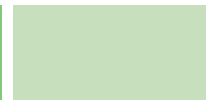
Color code: **346**  
Color name: Ireland Green



Color code: **377**  
Color name: Loden



Color code: **051**  
Color name: Kiwi



Color code: **332**  
Color name: Meadow Mist



Color code: **309**  
Color name: Spring Green



Color code: **070**  
Color name: Tree Frog



Color code: **315**  
Color name: Purplous



Color code: **305**  
Color name: Rose Petal



Color code: **368**  
Color name: Wineberry



Color code: **055**  
Color name: Adobe



Color code: **022 ●**  
Color name: Burnt Russet



Color code: **322**  
Color name: Cabernet



Color code: **096**  
Color name: Cardinal



Color code: **330**  
Color name: Pueblo



Color code: **304**  
Color name: Roho Red



Color code: **326**  
Color name: Copper Canyon



Color code: **071**  
Color name: Tangerine



Color code: **393**  
Color name: Tiger Lily



Color code: **027**  
Color name: Nubuck Suede



Color code: **366**  
Color name: Caramel



Color code: **065**  
Color name: Butter



Color code: **310**  
Color name: Lemon Ice



Color code: **362**  
Color name: Golden Rod

Urethane  
Edge Colors

Laminate images are not ideal representations of the laminate product. ESI highly recommends requesting samples from the laminate manufacturer prior to purchase.

More laminate options are available. Please contact our Customer Service Department for more information.

## Vibrant colors



Color code: **044**  
Color name: Harbor Haze



Color code: **363**  
Color name: Iron Ore



Color code: **398**  
Color name: Flannel



Color code: **088 ●**  
Color name: Graphite



Color code: **023 ●**  
Color name: French Roast



Color code: **037**  
Color name: Andesite



Color code: **300 ●**  
Color name: Black



Color code: **371 ●**  
Color name: Putty



Color code: **004 ●**  
Color name: Folkstone



Color code: **349 ●**  
Color name: Dove Grey



Color code: **318**  
Color name: Cobblestone



Color code: **067**  
Color name: Victorian Teal



Color code: **316**  
Color name: River Rock



Color code: **374**  
Color name: Mallard



Color code: **395 ●**  
Color name: Jute



Color code: **006 ●**  
Color name: Brownstone



Color code: **367 ●**  
Color name: Platinum



Color code: **005**  
Color name: Fog



Color code: **376 ●**  
Color name: Dolphin



Color code: **387**  
Color name: Innertone Light



Color code: **031**  
Color name: Basalt



Color code: **396**  
Color name: Charcoal



Color code: **329**  
Color name: Sweet Maple



Color code: **397**  
Color name: Pumice



Color code: **391 ●**  
Color name: Just Beige



Color code: **064**  
Color name: Khaki Brown



Color code: **306**  
Color name: Sahara



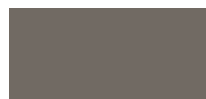
Color code: **007 ●**  
Color name: Pepperdust



Color code: **388**  
Color name: Mortar



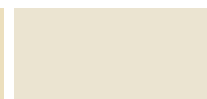
Color code: **386**  
Color name: Innertone



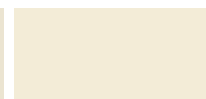
Color code: **039**  
Color name: Grigio



Color code: **323 ●**  
Color name: Atlantis  
● 090 Light Beige



Color code: **392 ●**  
Color name: White Sand



Color code: **352**  
Color name: Soft White



Color code: **359**  
Color name: Stone Cliff



Color code: **378**  
Color name: Sand



Color code: **075**  
Color name: Camel Train



Color code: **303**  
Color name: Chai Latte



Color code: **038**  
Color name: Corteza



Color code: **059**  
Color name: Brown



Color code: **084**  
Color name: Black Walnut

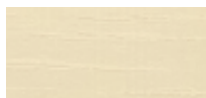
- Matching vinyl edge available

## Urethane Edge Colors

Laminate images are not ideal representations of the laminate product. ESI highly recommends requesting samples from the laminate manufacturer prior to purchase.

More laminate options are available. Please contact our Customer Service Department for more information.

### Wood grains



Color code: **090●**  
Color name: Light Beige



Color code: **329**  
Color name: Sweet Maple



Color code: **027**  
Color name: Nubuck Suede



Color code: **366**  
Color name: Caramel



Color code: **085**  
Color name: Cherry Wood



Color code: **330**  
Color name: Pueblo



Color code: **087**  
Color name: Warm Walnut



Color code: **358**  
Color name: Port Wine



Color code: **322**  
Color name: Cabernet



Color code: **035**  
Color name: Rootbeer



Color code: **017**  
Color name: Raisin



Color code: **086**  
Color name: Mahogany



Color code: **084**  
Color name: Black Walnut



Color code: **023●**  
Color name: French Roast



Color code: **300●**  
Color name: Black

- Matching vinyl edge available



## Shipping Information

Visit [esiergo.com](http://esiergo.com) for complete  
Terms and Conditions

### Shipping

#### *48 hour ship program*

ESI offers 48 hour shipping on the majority of products. Unless otherwise requested, these products are shipped from Phoenix, Arizona, within two business days of receiving the PO, depending on quantity ordered and available inventory. Orders that include products with longer lead times including special orders, custom products, or worksurface orders, are designated as “LT” (lead time) and therefore not included in the 48 hour ship program. Large orders may also require additional lead time. Products designated as LT could take up to 90 days ARO for delivery. Call for on-hand availability.

*Please note:*

1. For the order to qualify for 48 hour shipping, all products on the PO must be available under the 48 hour ship program.
2. POs that include LT designated products will be shipped based on the lead time of the LT designated products unless otherwise requested.
3. 48 hour orders will be shipped out within two business days unless otherwise specified on the PO.

#### *Freight terms*

ESI ships orders by way of standard ground carrier service dock-to-dock within the contiguous 48 states. Special requests such as “call before delivery”, “delivery lift gate required”, residential delivery, re-routed deliveries, or specific delivery date/time requests may be subject to additional charges or may not be available. Contact our Customer Service Department for expedited delivery requests or deliveries outside of the contiguous 48 states.

Customers will be charged additional fees for changes made to orders that have already departed the facility, resulting in re delivery or re-consignment.

ESI accepts requests for expedited freight at the customer’s expense. Please contact our Customer Service Department at 800.833.3746 and provide your preferred carrier account number in which to charge the expedited freight.

Worksurfaces are not sold separately and must be purchased with a table base. Worksurfaces may be drop-shipped from a separate location and may arrive on a date different than the other items on the order.

*Table bases-* Freight is free for orders of five (5) or more table bases or table bases with worksurfaces. A \$125 freight fee will be charged for orders of four (4) or fewer table bases. For orders including worksurfaces, there will be an additional \$150 freight fee.