

# Evolve1-MS

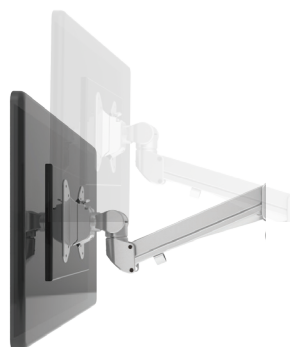
Single motion + slider monitor arm

# Evolve1-MS

Single motion + slider monitor arm



esi



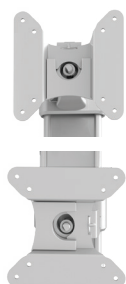
effortless  
adjustment



slider



cable management



landscape/portrait  
rotation



grommet mount



desk clamp



integrated allen key  
storage



VESA quick release

## Product specs

- Finger touch dynamic height adjustment
- Recommended for worksurfaces 30.0" deep or less
- 21.2" arm extension
- 6.7" arm retraction
- +80°/-60° monitor tilt
- ±90° VESA rotation
- 4.4lb.-15.4lb. weight capacity
- 18.0" pole height *(includes base)*
- VESA 75mm/100mm quick release
- 180° lock-out feature
- Desk clamp and grommet mount included
- Meets or exceeds BIFMA x5.5 and CSA CAN/CGSB44.227 guidelines
- Slider provides 8.5" of additional horizontal adjustability
- Patented slider design for exclusive ESI use
- Warranty: 15yr.
- GSA

## Model #

## List price

<input type="radio"/> EVOLVE1-MS-SLV	\$465
<input checked="" type="radio"/> EVOLVE1-MS-BLK	\$465
<input type="radio"/> EVOLVE1-MS-WHT	\$465

## Evolve monitor arm key

F - Fixed monitor arm

M - Motion monitor arm

S - Slider mount

## Evolve for every need

- As workstation needs change, so can the Evolve configurations. Additional components sold separately
- Benching system mount(s) available

*Call our Customer Service Department for compatibility and pricing for custom configurations.*

# Evolve1-MS

Single motion + slider monitor arm

