



Kata™ EX1-MS

Single motion + slider monitor arm

KataEX1-MS

Single motion + slider monitor arm



tension adjustment



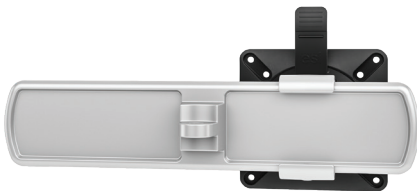
integrated tool storage



grommet mount



desk clamp



slider mount



connection sleeve

Product specs

- Finger touch dynamic height adjustment
- Recommended for worksurfaces 30.0" deep or less
- 23.0" arm extension
- 6.6" arm retraction
- +90°/-45° monitor tilt
- ±90° VESA rotation
- 2.5 lb.–18.5 lb. weight capacity
- 16.0" pole height (includes base)
- VESA 75mm/100mm quick release
- 180° lock-out feature
- Specify a grommet mount or a desk clamp mount
- Slider provides 9.5" of additional horizontal adjustability
- Tension adjustment indicator for precision installation
- Each connection sleeve can accommodate up to three monitors depending on the configuration
- Partially assembled for quick installation
- Integrated cord management
- Integrated tool holder
- Meets or exceeds ANSI/BIFMA x5.5 guidelines
- Designed for ESI by Roger Webb Associates of London
- Warranty: 15 yr.

Model #	List price
○ KATAEX1-DC-MS-SLV	\$527
● KATAEX1-DC-MS-BLK	\$527
○ KATAEX1-DC-MS-WHT	\$527
○ KATAEX1-GM-MS-SLV	\$527
● KATAEX1-GM-MS-BLK	\$527
○ KATAEX1-GM-MS-WHT	\$527

KataEX monitor arm key	Available mounting options
F - Fixed monitor arm	DC - Desk clamp
M - Motion monitor arm	GM - Grommet mount
S - Slider mount	

KataEX for every need

- As workstation needs change, so can the KataEX configurations. Additional components sold separately
- Benching system mount(s) available

Call our Customer Service Department for compatibility and pricing for custom configurations.

KataEX1-MS

Single motion + slider monitor arm

