



esi®



Send™ EX2-FS

Dual fixed + slider monitor arm

Sena™ EX2-FS

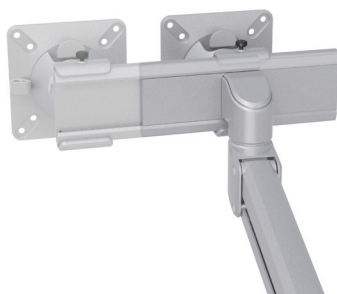
Dual fixed + slider monitor arm



grommet mount



desk clamp



slider mount

Product specs

- Manual Height Adjustment
- Recommended for worksurfaces 30" deep or less
- 14.78" arm extension
- 4.7" arm retraction
- +/-60° monitor tilt
- +/-90° VESA rotation
- 2.2lb. - 19.8lb weight capacity (per arm)
- 16" pole height (includes base)
- VESA 75mm/100mm quick release
- 180° lock-out feature
- 270° / 135° arm rotation with 180° lock out
- Desk clamp and grommet mount included
- 31.50" max monitor width
 - Bezel measured left to right
- Meets or exceeds BIFMA x5.5 and CSA CAN/CGSB44.227 guidelines
- Warranty: 15 yr

Model

- ☐ SENAEX2-FS-SLV
- ☒ SENAEX2-FS-BLK
- ☐ SENAEX2-FS-WHT

SenaEX monitor arm key

- F - Fixed monitor arm
- M - Motion monitor arm
- S - Slider mount

Available mounting options

- DC - Desk clamp
- GM - Grommet mount

SenaEX for every need

- As workstation needs change, so can the SenaEX configurations. Additional components sold separately

Call our Customer Service Department for pricing for custom configurations.

Sena™ EX2-FS

Dual fixed + slider monitor arm

esi.®

