



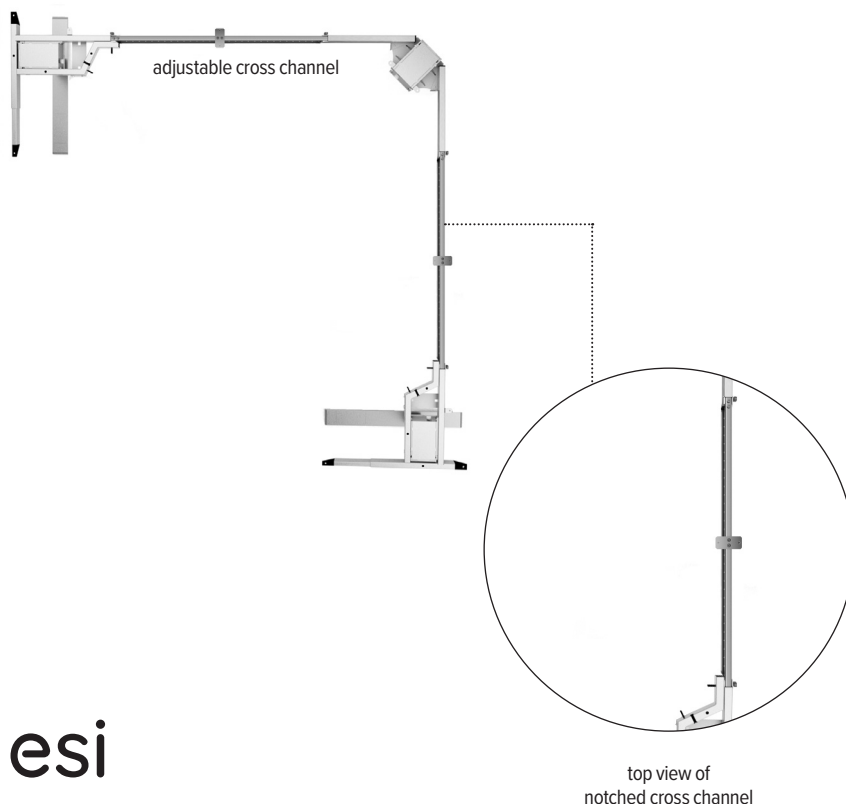
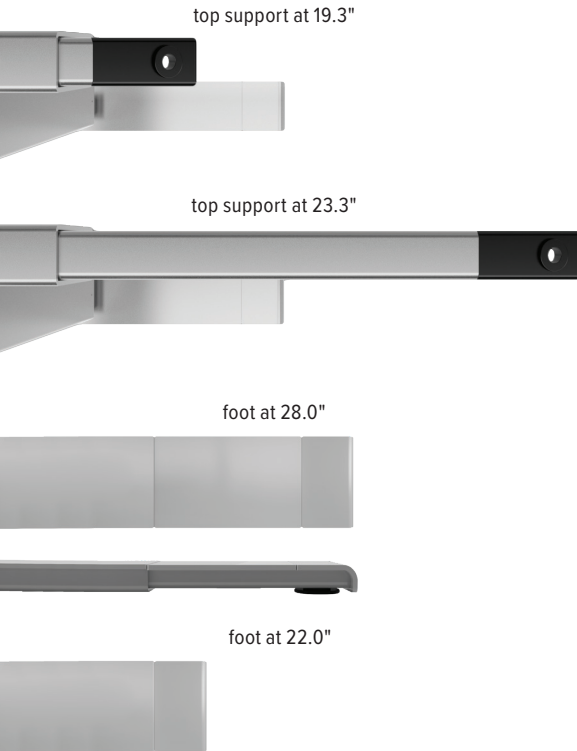
# All-Flex<sup>®</sup> 3-leg + Conceal

electric table base

# All-Flex 3-leg + Conceal

electric table base

## All-Flex features



## Conceal






## All-Flex® 3-leg specs

- Electric height adjustment
- 330 lbs. base lifting capacity
- 1.5"/sec adjustment speed
- One part number for all 3-leg sizes
- 26.0" height adjustment range
  - 23.2"–49.2" (low/high)
  - (excluding worksurface)
- Three-stage adjustable legs
- Provides adjustable cross channels, top support, and feet making it one of the most adjustable table bases on the market.
- Foot is adjustable to 22.0" or 28.0"
  - (patented design)
- Adjustable width frame to fit worksurfaces 36.0"–84.0" wide
- Adjustable depth top support expands to accommodate worksurfaces 24.0"–36.0" deep
- Notched cross channel offers ample space for keyboard tray glide tracks
- 86.0" power cord
- Digital keypad with four memory settings
- Anti-collision safety feature
- Quick start
- Crossbar includes guide markings to assist in setting width
- Folding frame design for quick assembly
- Integrated control unit shelf
- Integrated storage for foot extension plate when not in use
- Integrated cable management
- Quiet adjustment
- Steel construction
- Low standby power consumption
- Lead free
- Three motors
- ADA compliant
- Locking casters are available
- Warranty: 15 yrs. structural / 7 yrs. mechanical

## Conceal specs

- 53.5" total height
- 23links
- Links are detachable
- Weighted bottom
- Attaches to bottom of worksurface
- Warranty: 15 yrs.

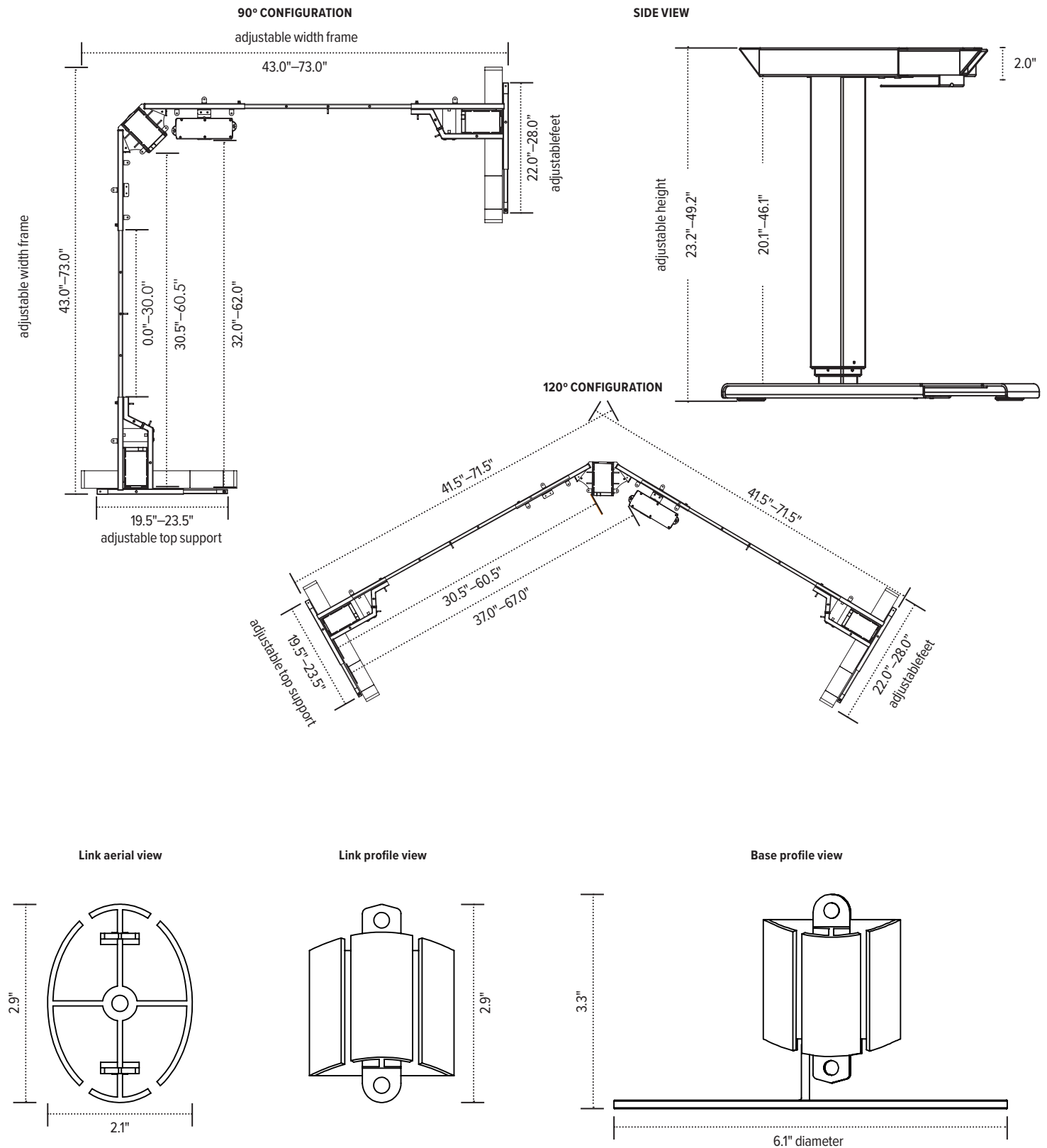
Model #	List price
 FLEX3-CNCL-SLV	\$2,432
 FLEX3-CNCL-BLK	\$2,432
 FLEX3-CNCL-WHT	\$2,432

esi

800.833.3746  
esiergo.com

# All-Flex 3-leg + Conceal

electric table base



esi

800.833. 3746  
esiergo.com

The base dimensions as shown are actual.

© 2019 Fellowes, Inc.