



## All-Flex<sup>®</sup> 2-leg

electric table base

# All-Flex 2-leg

## electric table base

top support at 19.3"



top support at 23.3"



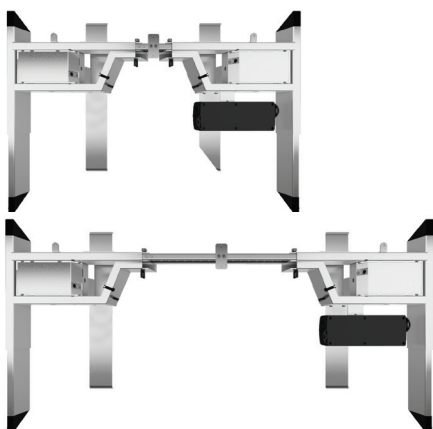
foot at 28.0"



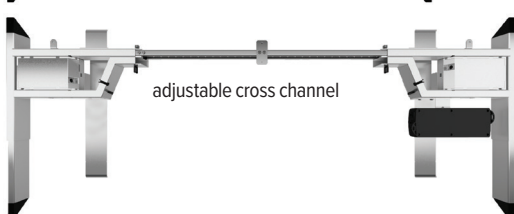
foot at 22.0"



top views of  
notched cross channel



adjustable cross channel



### Product Specs

- Electric height adjustment
- 265lbs. base lifting capacity
- 1.5"/sec adjustment speed
- One part number for all 2-leg sizes
- 26.0" height adjustment range
  - 23.2"–49.2" (low/high)  
(excluding worksurface)
- Three-stage adjustable legs
- Provides adjustable cross channels, top support, and feet making it one of the most adjustable table bases on the market
- Foot is adjustable to 22.0" or 28.0" (patented design)
- Adjustable width frame to fit worksurfaces 36.0"–84.0" wide
- Adjustable depth top support expands to accommodate worksurfaces 24.0"–36.0" deep
- Notched cross channel offers ample space for keyboard tray glide tracks
- 86.0" power cord
- Digital keypad with four memory settings
- Anti-collision safety feature
- Quickstart
- Crossbar includes guide markings to assist in setting width
- Folding frame design for quick assembly
- Integrated control unit shelf
- Integrated storage for foot extension plate when not in use
- Integrated cable management
- Quiet adjustment
- Steel construction
- Low standby power consumption
- Table base is UL962 listed
- Lead-free
- Two motors
- ADA compliant
- Locking casters are available
- Warranty: 15yrs. structural / 7yrs. mechanical

### Available base finishes

- Silver -SLV
- LT Black -BLK
- LT White -WHT

LT=CALL FOR ON HAND AVAILABILITY



digital keypad

### Caster Kit

- Set of casters for table bases
- Increases height by 2.0"
- Locking casters for security

MODEL # CASTERKIT-FLEX2




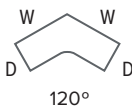
locking casters

# esi

800.833.3746  
esiergo.com

# All-Flex 2-leg

electric table base

Table bases		Available worksurfaces			
Table base model	Worksurface shape	Worksurface dimension	TFL Quick ship	TFL Standard	HPL Standard
FLEX2-___	 Rectangle	36"w x 24"d	—	●	●
		42"w x 24"d	—	●	●
		48"w x 24"d	●	●	●
		60"w x 24"d	—	●	●
		72"w x 24"d	—	●	●
		84"w x 24"d	—	●	●
		36"w x 30"d	—	●	●
		42"w x 30"d	—	●	●
		48"w x 30"d	—	●	●
		60"w x 30"d	●	●	●
		72"w x 30"d	—	●	●
Table base model	Worksurface shape	Worksurface dimension	TFL Quick ship	TFL Standard	HPL Standard
FLEX2-___	 120°	48"w x 24"d	—	●	●
		60"w x 24"d	—	—	●
		72"w x 24"d	—	—	●
		48"w x 30"d	—	—	●
		60"w x 30"d	—	—	●
		72"w x 30"d	—	—	●

## Worksurface Program

Multiple worksurface shapes and laminates are available. See the Complete Table & Worksurface Ordering Guide for worksurface details including pricing and laminate colors. TFL Quick ship worksurfaces are shipped out in 48 hours, TFL and HPL Standard worksurfaces ship in 2–3 weeks.

Table bases and worksurfaces can be purchased independently or as a combination.

ESI table bases and worksurfaces are made to exact dimensions. If nominal sizing is needed, please specify when ordering.

esi

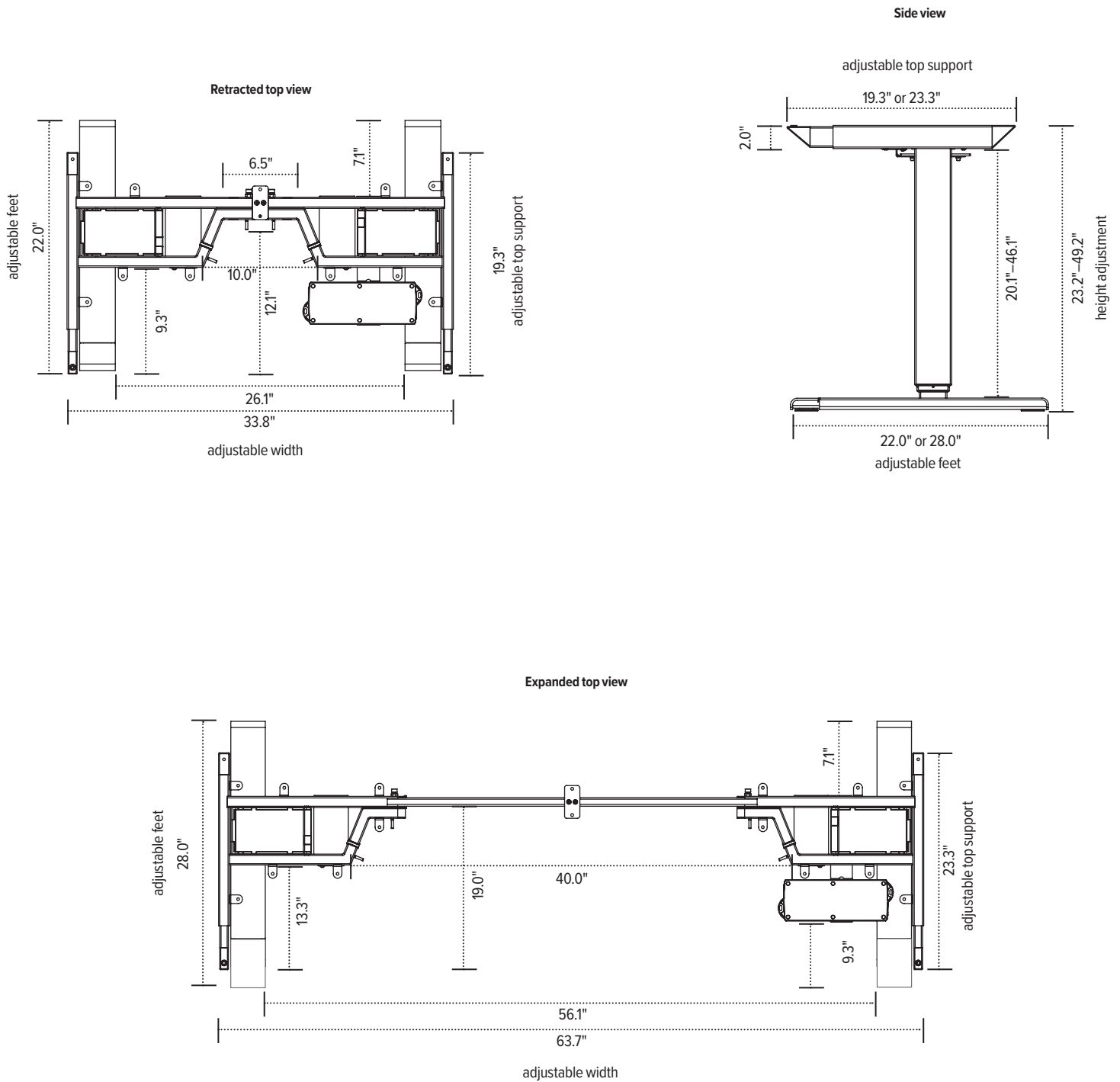
800.833.3746

esiargo.com

© 2019 Fellowes, Inc. V32 catalog pricing.

# All-Flex 2-leg

electric table base



The base dimensions as shown are actual.

esi

800.833.3746  
esiergo.com