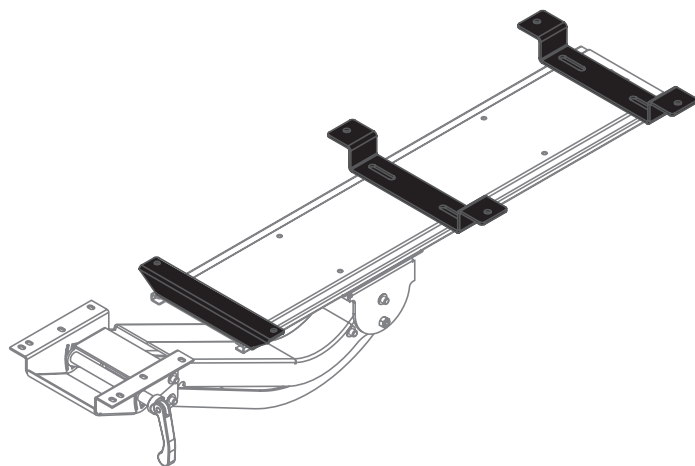


# Spacer Kit

glide track accessory

# Spacer Kit

glide track accessory



example of how you can add a spacer kit to an existing articulating arm

## Product specs

Ideal for height adjustable tables and benching systems, the Spacer-Kit creates a flat mounting surface for keyboard arms and glide tracks where cross channels typically prevent installation.

- Compatible with most ESI keyboard arms and glide tracks\*
- Attaches between underside of work surface and a keyboard arm or glide track
- Includes mounts for benching systems and Height adjustable tables
- Powder coated steel construction
- (2) Two sets of spacers included to accommodate needed spacing between 1.0"–2.2"
- Includes installation hardware
- Warranty: 15 years



| Model #       | List price |
|---------------|------------|
| SPACERKIT-KBD | \$65       |

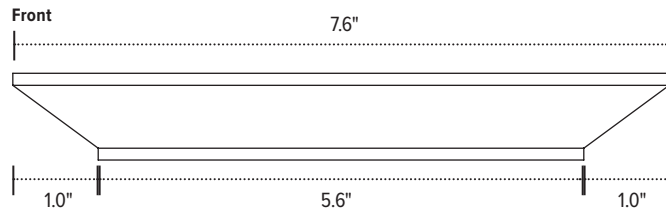
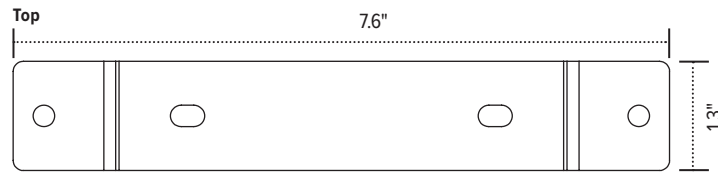
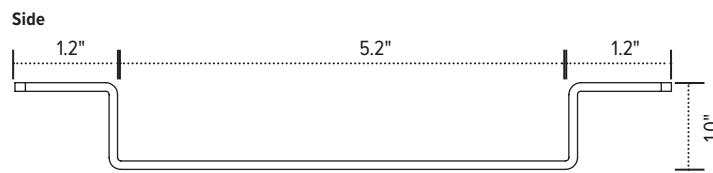
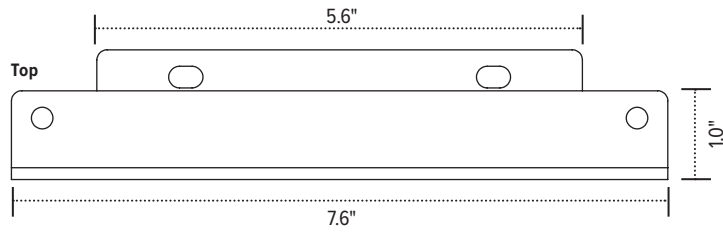
\*NOT COMPATIBLE WITH CPULOCK

esi

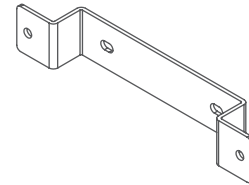
800.833.3746  
esiergo.com

# Spacer Kit

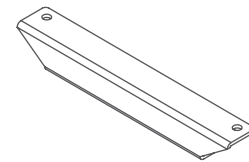
glide track accessory



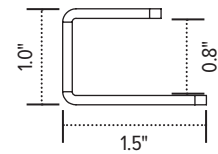
Inner bracket



Front bracket



Side



esi

800.833.3746  
esiergo.com