



All-Flex[®] 2-leg

electric table base

All-Flex 2-leg

electric table base

top support at 19.3"



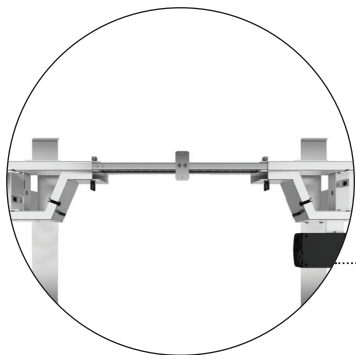
top support at 23.3"



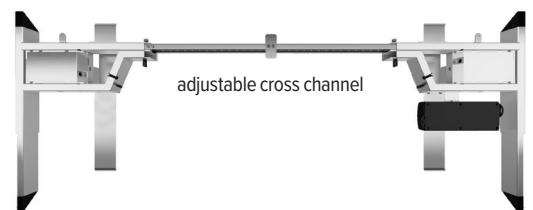
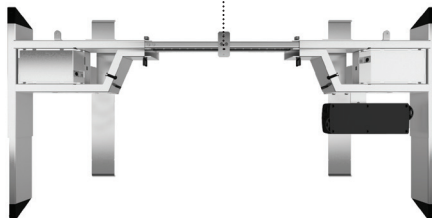
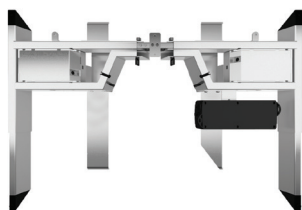
foot at 28.0"



foot at 22.0"



top view of
notched cross channel



adjustable cross channel

Product Specs

- One part number for all 2-leg sizes
- Height adjustment range: 26.0"
 - Low: 23.2" | High: 49.2" (excluding worksurface)
- Adjusts to fit worksurfaces 36.0"–84.0" wide
- Adjustment speed: 1.5"/sec
- Base lifting capacity: 265 lbs
- Adjustable feet: 22.0" or 28.0" (patented design)
- Crossbar includes guide markings to assist in setting width
- Top support expands to more effectively accommodate worksurfaces 24.0"–36.0" deep
- Notched cross channel offers ample space for keyboard tray glide tracks
- Anti-collision safety feature
- 86.0" power cable
- Quick start
- Digital keypad with four memory settings
- Folding frame design for quick assembly
- Integrated control unit shelf
- Integrated storage for foot extension plate when not in use
- Integrated cable management
- Quiet adjustment
- Steel construction
- Low standby power consumption
- Lead free
- Three-stage adjustable legs
- Dual motor
- ADA compliant
- Optional casters are available
- Warranty: 15 yrs. structural / 7 yrs. mechanical
- Not available on GSA contract

NON GSA



digital keypad

esi

800.833. 3746
esiergo.com

All-Flex 2-leg

electric table base

Rectangle



Dimensions

36"w x 24"d
42"w x 24"d
48"w x 24"d
60"w x 24"d
72"w x 24"d
84"w x 24"d
36"w x 30"d
42"w x 30"d
48"w x 30"d
60"w x 30"d
72"w x 30"d
84"w x 30"d

Base model

FLEX2-____
FLEX2-____
FLEX2-____
FLEX2-____
FLEX2-____
FLEX2-____
FLEX2-____
FLEX2-____
FLEX2-____
FLEX2-____
FLEX2-____
FLEX2-____

Surface model

2R3624__
2R4224__
2R4824__
2R6024__
2R7224__
2R8424__
2R3630__
2R4230__
2R4830__
2R6030__
2R7230__
2R8430__

Caster Kit

Set of caster wheels for table bases
Increases height by 2.0"
Locking wheels for security

MODEL # CASTERKIT-FLEX2

Available base finishes

● Silver -SLV

● LT Black -BLK

● LT White -WHT

LT=CALL FOR ON HAND AVAILABILITY

D-top



Dimensions

60"w x 30"d
72"w x 30"d
84"w x 30"d

Base model

FLEX2-____
FLEX2-____
FLEX2-____

Surface model

D6030__
D7230__
D8430__

Worksurface Choices

Multiple worksurface shapes are available. See chart to the left for full list. Worksurfaces can be come in a variety of laminates.

Small equal corner



Dimensions

42"wr x 42"wl x 24"d
48"wr x 48"wl x 24"d

Base model

FLEX2-____
FLEX2-____

Surface model

2EC424224__
2EC484824__

Table bases can be purchased independently or combined with a worksurface. Worksurfaces can only be purchased with a table base. See laminate guide worksurface for details.

Edge Detail

Worksurfaces ship with a standard square profile edge and coordinating 3mm edge band. Additional edge detail profiles are available.



esi

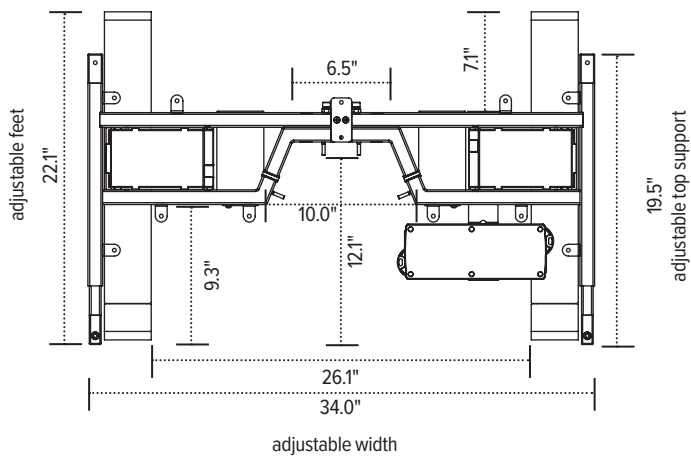
800.833. 3746
esiergo.com

© 2018 Fellowes, Inc.

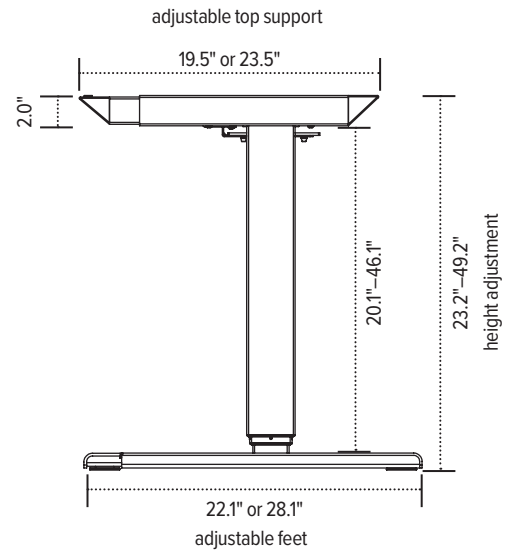
All-Flex 2-leg

electric table base

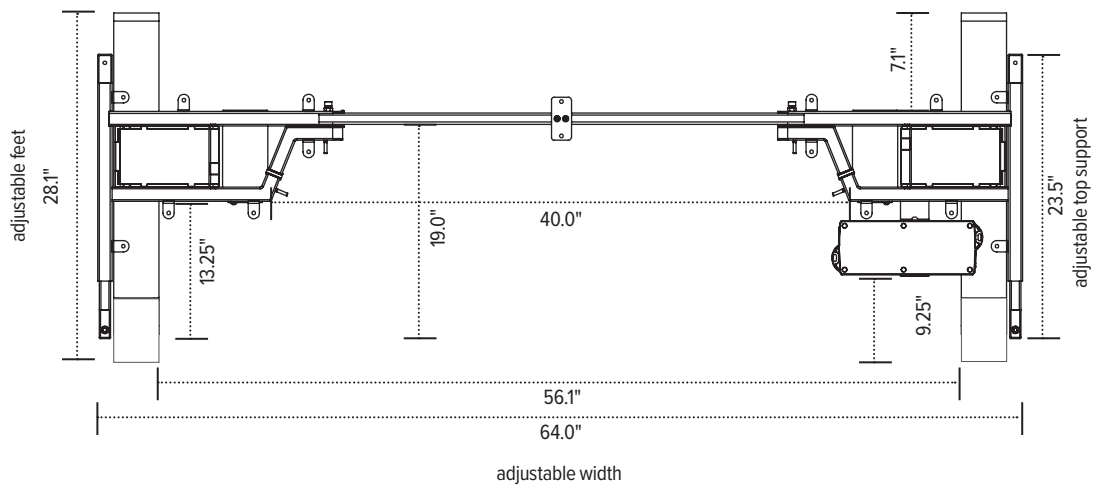
Retracted



Side



Expanded



esi

800.833. 3746
esiergo.com