

Evolve1-MS

Single motion + slider monitor arm

Evolve1-MS

Single motion + slider monitor arm



esi®



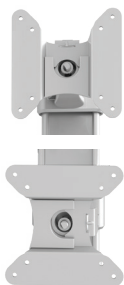
effortless
adjustment



slider



cable management



landscape/portrait
rotation



grommet mount



desk clamp




integrated allen key
storage



VESA quick release

Product specs

- Finger touch dynamic height adjustment
- Recommended for worksurfaces 30.0" deep or less
- 15.41" arm extension
- 5.07" arm retraction
- +80°/-60° monitor tilt
- ±90° VESA rotation
- 4.4lb.-15.4lb. weight capacity
- 19.70" pole height *(includes base)*
- VESA 75mm/100mm quick release
- 180° lock-out feature
- Desk clamp and grommet mount included
- Meets or exceeds BIFMA x5.5 and CSA CAN/CGSB44.227 guidelines
- Slider provides 8.5" of additional horizontal adjustability
- Patented slider design for exclusive ESI use
- Warranty: 15yr.
- 

Model

- ☐ EVOLVE1-MS-SLV
- ☒ EVOLVE1-MS-BLK
- ☐ EVOLVE1-MS-WHT

Evolve monitor arm key

- F - Fixed monitor arm
- M - Motion monitor arm
- S - Slider mount

Evolve for every need

- As workstation needs change, so can the Evolve configurations. Additional components sold separately
- Benching system mount(s) available

Call our Customer Service Department for compatibility and pricing for custom configurations.

Evolve1-MS

Single motion + slider monitor arm

