



Kata™ EX2-FMS

Dual fixed + motion + slider monitor arm

KataEX2-FMS

Dual fixed + motion + slider monitor arm



tension adjustment



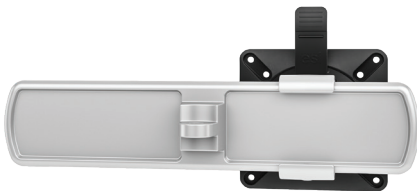
integrated tool storage



grommet mount



desk clamp



slider mount



connection sleeve

Product specs

- Finger touch dynamic height adjustment
- Recommended for worksurfaces 36.0" deep or less
- 33.4" arm extension
- 6.6" arm retraction
- +90°/-45° monitor tilt
- ±90° VESA rotation
- 2.5 lb.–18.5 lb. weight capacity (*per arm*)
- 16.0" pole height (*includes base*)
- VESA 75mm/100mm quick release
- 180° lock-out feature
- Specify a grommet mount or a desk clamp mount
- Slider provide 9.5" of additional horizontal adjustability
- Tension adjustment indicator for precision installation
- Each connection sleeve can accommodate up to three monitors depending on the configuration
- Partially assembled for quick installation
- Integrated cord management
- Integrated tool holder
- Meets or exceeds ANSI/BIFMA x5.5 guidelines
- 32.0" max. monitor width
Bezel measured left to right.
Max. width is contingent on weight capacity.
- Designed for ESI by Roger Webb Associates of London
- Warranty: 15 yr.

Model #	List price
<input type="radio"/> KATAEX2-DC-FMS-SLV	\$1,026
<input checked="" type="radio"/> KATAEX2-DC-FMS-BLK	\$1,026
<input type="radio"/> KATAEX2-DC-FMS-WHT	\$1,026
<input type="radio"/> KATAEX2-GM-FMS-SLV	\$1,026
<input checked="" type="radio"/> KATAEX2-GM-FMS-BLK	\$1,026
<input type="radio"/> KATAEX2-GM-FMS-WHT	\$1,026

KataEX monitor arm key	Available mounting options
F - Fixed monitor arm	DC - Desk clamp
M - Motion monitor arm	GM - Grommet mount
S - Slider mount	

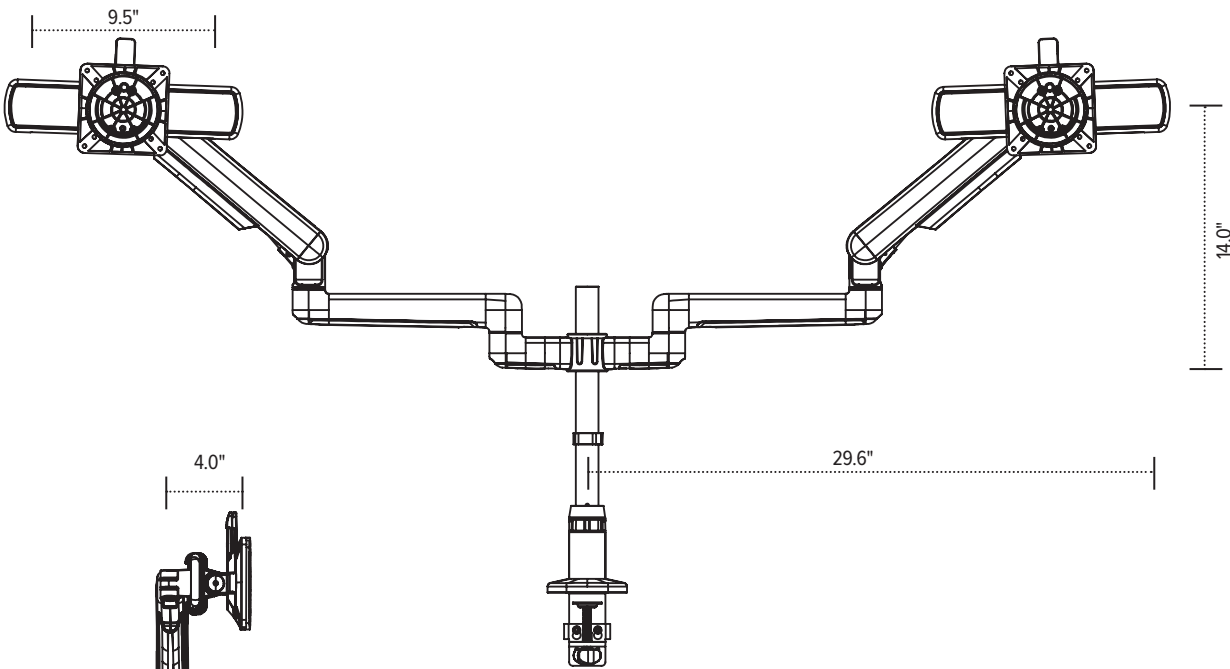
KataEX for every need

- As workstation needs change, so can the KataEX configurations. Additional components sold separately
- Benching system mount(s) available

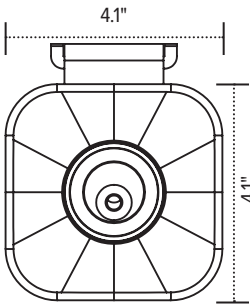
Call our Customer Service Department for compatibility and pricing for custom configurations.

KataEX2-FMS

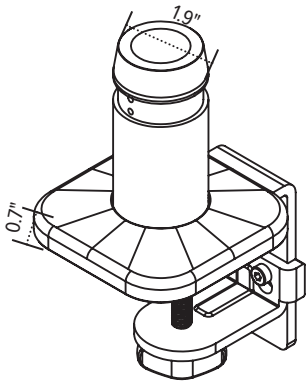
Dual fixed + motion + slider monitor arm



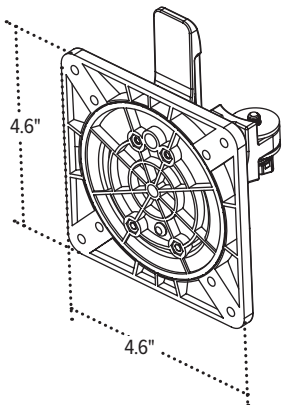
Base



Base



VESA plate



VESA mount
(profile view)

