



esi®



# Send™ EX2-FMS

Dual fixed + motion + slider monitor arm

V35 - Pricing effective 6/1/2021

# Sena™EX2-FMS

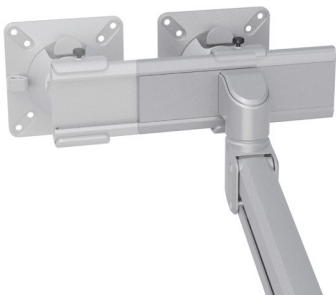
Dual fixed + motion + slider monitor arm



grommet mount



desk clamp



slider mount

## Product specs

- Finger touch dynamic height adjustment
- Recommended for worksurfaces 36" deep or less
- 34.3" height adjustment range
  - 0.0"-34.3" (low/high)
- 30.1" arm extension
- 4.7" arm retraction
- +/-60° monitor tilt
- +/-90° VESA rotation
- 2.2lb. - 19.8lb weight capacity (per arm)
- 20.1" pole height (includes base)
- VESA 75mm/100mm quick release
- 180° lock-out feature
- 270° / 135° arm rotation with 180° lock out
- 40" max monitor width
  - Bezel measured left to right
  - Max width is contingent on weight capacity
- Desk clamp and grommet mount included
- Meets or exceeds BIFMA x5.5 and CSA CAN/CGSB44.227 guidelines
- Warranty: 15 yr

Model #	List price
<input type="radio"/> SENAEX2-FMS-SLV	\$757
<input checked="" type="radio"/> SENAEX2-FMS-BLK	\$757
<input type="radio"/> SENAEX2-FMS-WHT	\$757

SenaEX monitor arm key	Available mounting options
F - Fixed monitor arm	DC - Desk clamp
M - Motion monitor arm	GM - Grommet mount
S - Slider mount	

## SenaEX for every need

- As workstation needs change, so can the SenaEX configurations. Additional components sold separately

Call our Customer Service Department for pricing for custom configurations.

# Sena™ EX2-FMS

esi.®

Dual fixed + motion + slider monitor arm

