

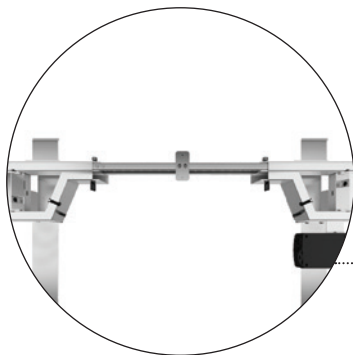
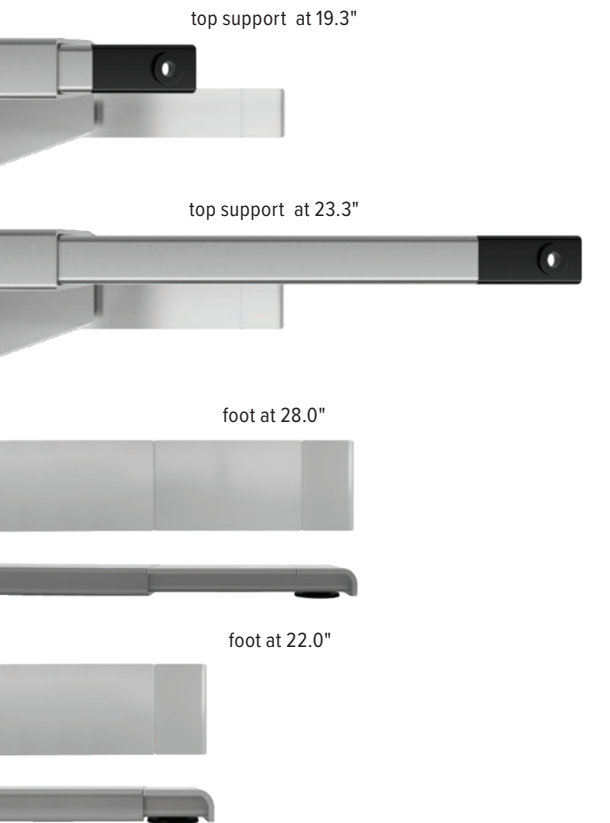


## All-Flex<sup>®</sup> 2-leg

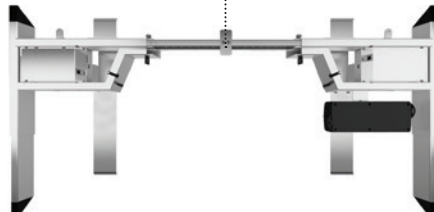
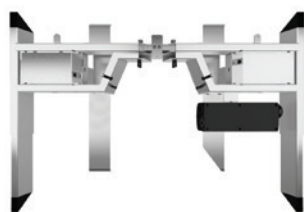
electric table base

# All-Flex 2-leg

electric table base



top view of  
notched cross channel



adjustable cross channel

## Product Specs

- Electric height adjustment
- 265lbs. base lifting capacity
- 1.5"/sec adjustment speed
- One part number for all 2-leg sizes
- 26.0" height adjustment range
  - 23.2"–49.2" (low/high)
  - (excluding worksurface)
- Three-stage adjustable legs
- Provides adjustable cross channels, top support, and feet making it one of the most adjustable table bases on the market.
- Foot is adjustable to 22.0" or 28.0" (*patented design*)
- Adjustable width frame to fit worksurfaces 36.0"–84.0" wide
- Adjustable depth top support expands to accommodate worksurfaces 24.0"–36.0" deep
- Notched cross channel offers ample space for keyboard tray glide tracks
- 86.0" power cord
- Digital keypad with four memory settings
- Anti-collision safety feature
- Quick start
- Crossbar includes guide markings to assist in setting width
- Folding frame design for quick assembly
- Integrated control unit shelf
- Integrated storage for foot extension plate when not in use
- Integrated cable management
- Quiet adjustment
- Steel construction
- Low standby power consumption
- Lead free
- Two motors
- ADA compliant
- Locking casters are available
- Warranty: 15yrs. structural / 7yrs. mechanical



digital keypad

esi

800.833.3746  
esiergo.com

# All-Flex 2-leg

electric table base

## Rectangle



### Dimensions

36"w x 24"d  
42"w x 24"d  
48"w x 24"d  
60"w x 24"d  
72"w x 24"d  
84"w x 24"d  
36"w x 30"d  
42"w x 30"d  
48"w x 30"d  
60"w x 30"d  
72"w x 30"d  
84"w x 30"d

### Base model

FLEX2-\_\_\_  
FLEX2-\_\_\_  
FLEX2-\_\_\_  
FLEX2-\_\_\_  
FLEX2-\_\_\_  
FLEX2-\_\_\_  
FLEX2-\_\_\_  
FLEX2-\_\_\_  
FLEX2-\_\_\_  
FLEX2-\_\_\_  
FLEX2-\_\_\_  
FLEX2-\_\_\_

### Surface model

2R3624\_\_  
2R4224\_\_  
2R4824\_\_  
2R6024\_\_  
2R7224\_\_  
2R8424\_\_  
2R3630\_\_  
2R4230\_\_  
2R4830\_\_  
2R6030\_\_  
2R7230\_\_  
2R8430\_\_

## D-top



### Dimensions

60"w x 30"d  
72"w x 30"d  
84"w x 30"d

### Base model

FLEX2-\_\_\_  
FLEX2-\_\_\_  
FLEX2-\_\_\_

### Surface model

D6030\_\_  
D7230\_\_  
D8430\_\_

## Small equal corner



### Dimensions

42"wr x 42"wl x 24"d  
48"wr x 48"wl x 24"d

### Base model

FLEX2-\_\_\_  
FLEX2-\_\_\_

### Surface model

2EC424224\_\_  
2EC484824\_\_

Table bases can be purchased independently or combined with a worksurface.  
Worksurfaces can only be purchased with a table base. See laminate guide worksurface for details. ESI worksurfaces are made to exact dimensions. If nominal sizing is needed, please specify when ordering.

## Caster Kit

- Set of caster wheels for table bases
- Increases height by 2.0"
- Locking wheels for security

MODEL # CASTERKIT-FLEX2

## Available base finishes

- ☐ Silver -SLV
- ☒ Black -BLK
- ☐ White -WHT

LT=CALL FOR ON HAND AVAILABILITY

## Worksurface shapes - LT

Multiple worksurface shapes are available. See chart to the left for full list. Worksurfaces can be come in a variety of laminates.

## Edge Detail

Worksurfaces ship with a standard square profile edge and coordinating 3mm edge band. Additional edge detail profiles are available.

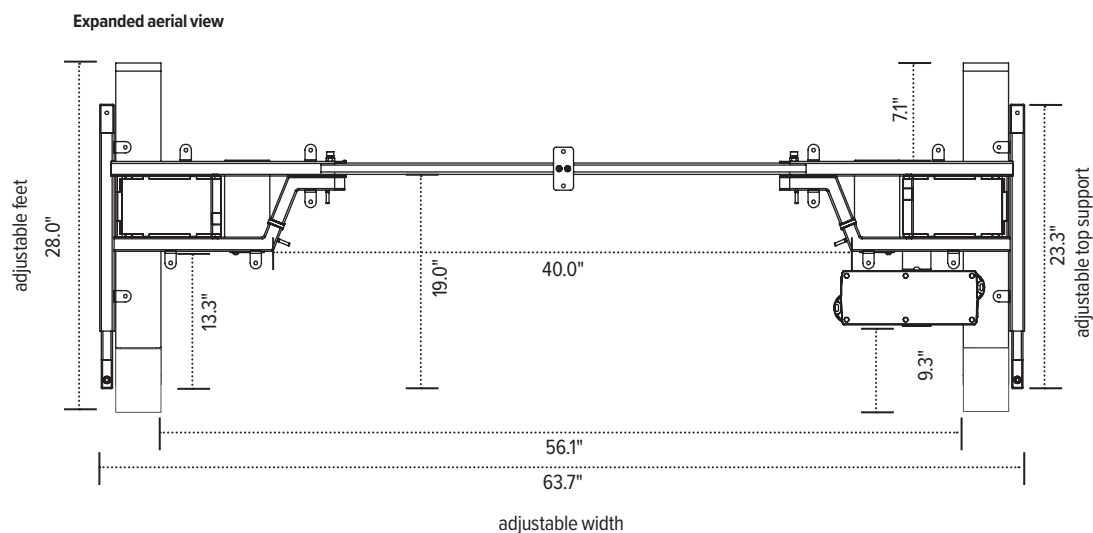
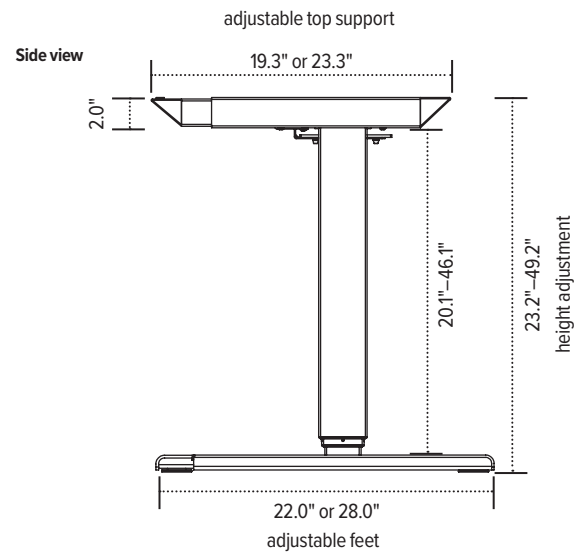
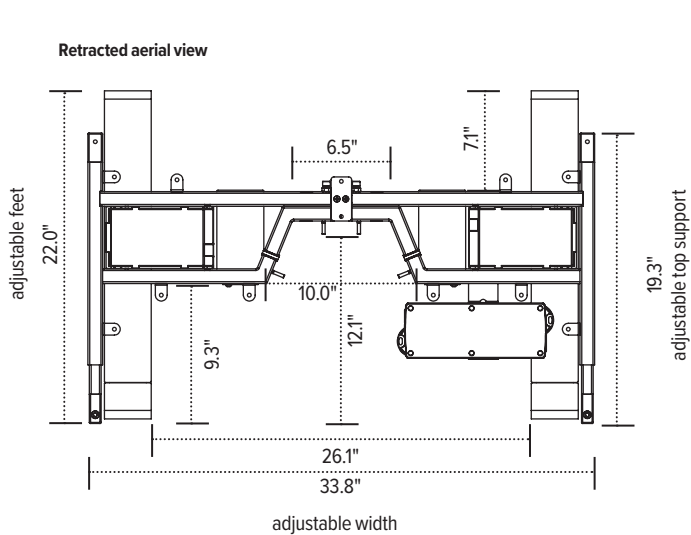


esi

800.833.3746  
esiergo.com

# All-Flex 2-leg

electric table base



The base dimensions as shown are actual.

esi

800.833.3746  
esiergo.com