



Installation instructions

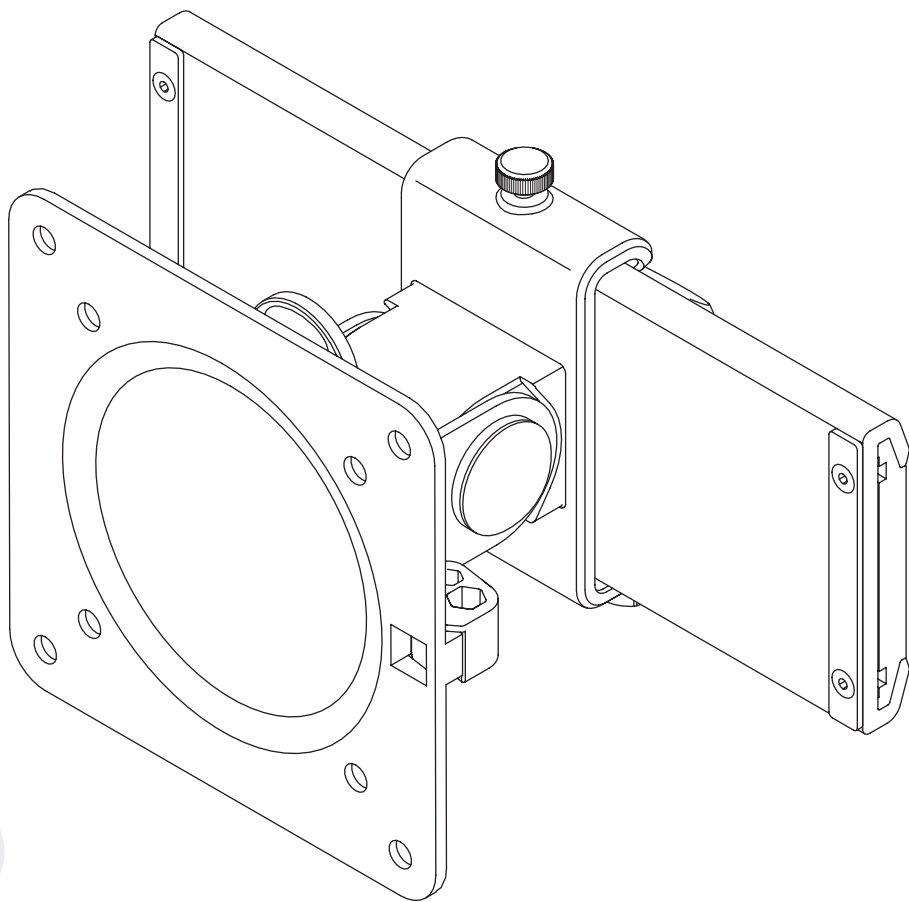
# Sena™ slider mount

VESA slider mount for Sena and SenaEX

Model # SENA-SLD-SLV

Model # SENA-SLD-BLK

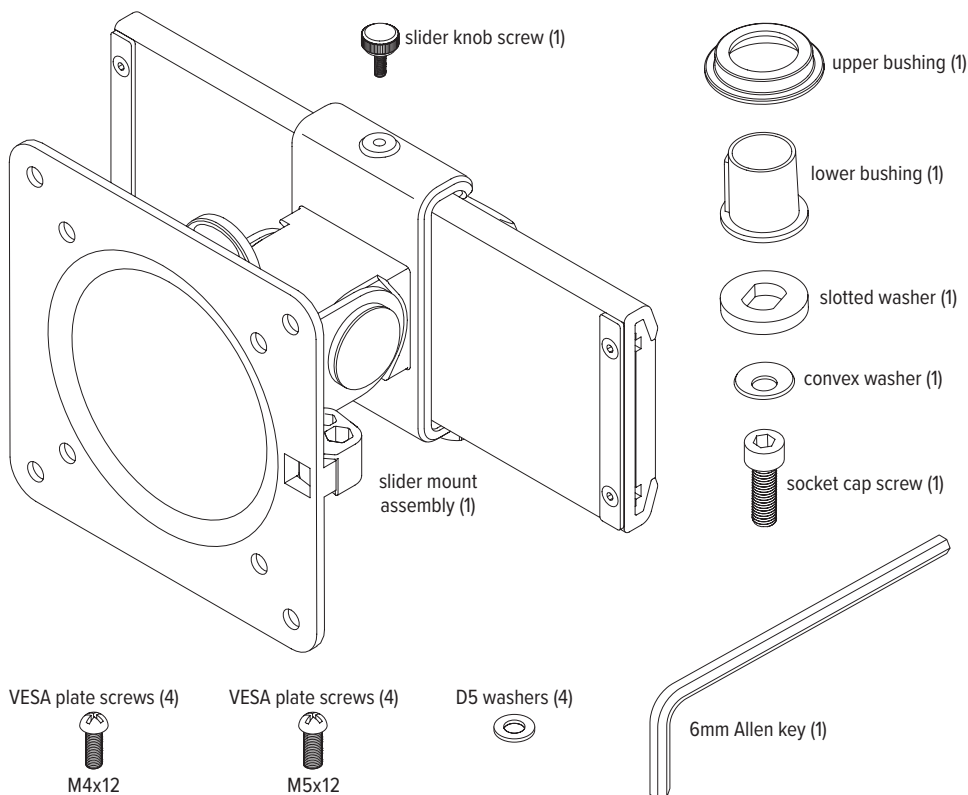
Model # SENA-SLD-WHT



**Caution**

- Hand tighten screws only. Do not use power tools.

**Please review** these instructions before beginning the installation. Use the illustrations below to check that all the components needed for your installation were provided with your order. Do not discard the packaging until the product works to your satisfaction. **NOTE:** It may be helpful if the installation instructions that came with the original order are available.

**Components and tools****Additional tools required**

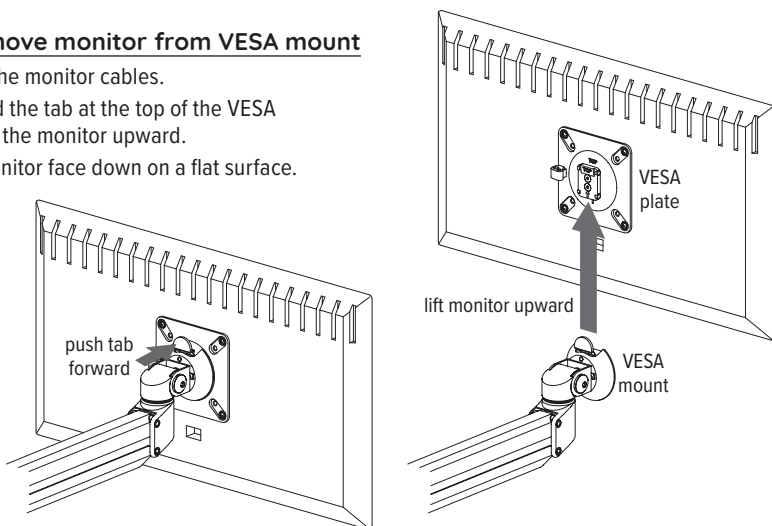
- Phillips screwdriver



**NOTE:** The procedure for retrofitting the Sena slider mount is the same whether it is being attached to a motion arm or a fixed arm.

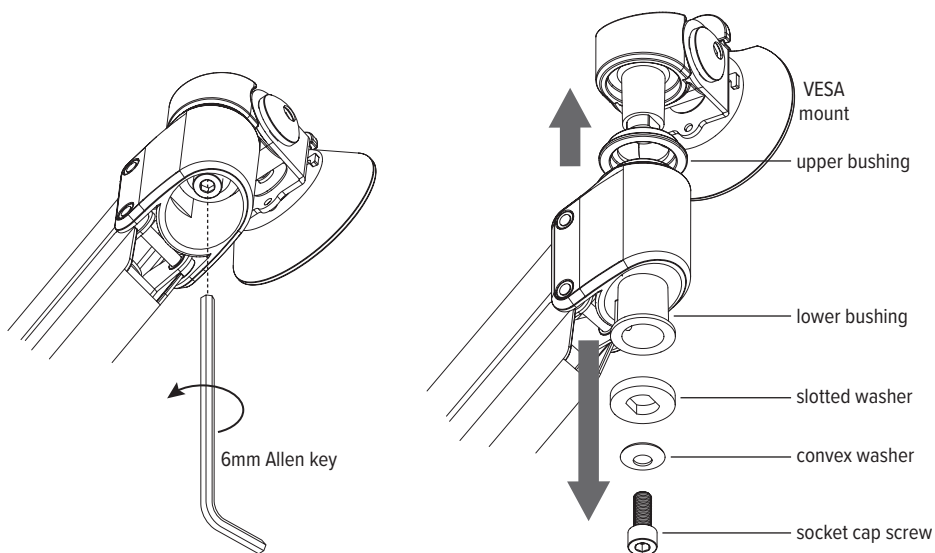
## **Step #1: remove monitor from VESA mount**

- Disconnect the monitor cables.
- Push forward the tab at the top of the VESA plate and lift the monitor upward.
- Place the monitor face down on a flat surface.



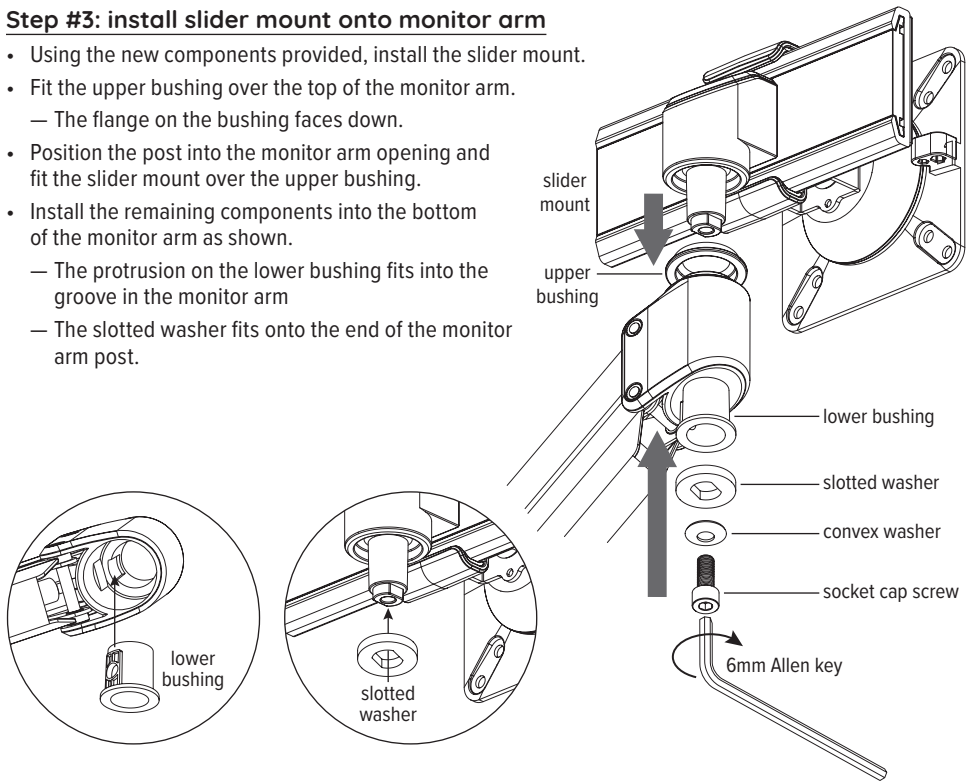
## **Step #2: remove VESA mount from monitor arm**

- Remove the socket cap screw under the VESA mount using the 6mm Allen key.
- Remove the VESA mount and upper bushing from the top of the monitor arm.
- Remove the convex washer, slotted washer, and lower bushing from the bottom of the monitor arm.
- Note the orientation of all components to assist in the reassembly described in Step #3.

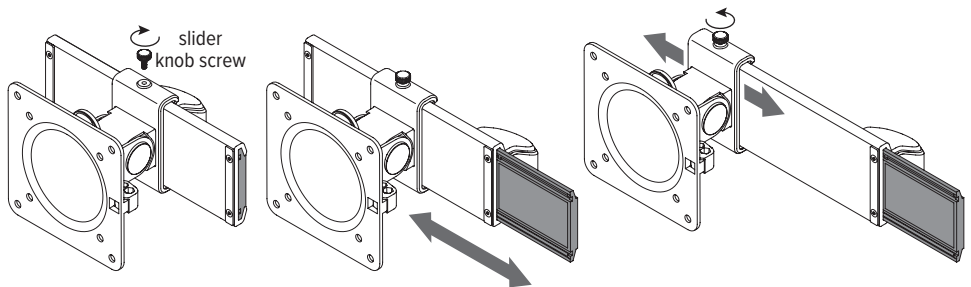


**Step #3: install slider mount onto monitor arm**

- Using the new components provided, install the slider mount.
- Fit the upper bushing over the top of the monitor arm.
  - The flange on the bushing faces down.
- Position the post into the monitor arm opening and fit the slider mount over the upper bushing.
- Install the remaining components into the bottom of the monitor arm as shown.
  - The protrusion on the lower bushing fits into the groove in the monitor arm
  - The slotted washer fits onto the end of the monitor arm post.

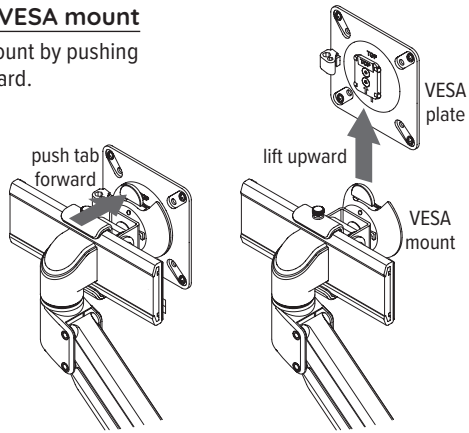
**Step #4: install slider knob screw**

- Attach a slider knob screw to the top of the slider assembly. Tighten securely.
- The slider mount moves freely along the black bar to adjust the side-to-side position of the monitor.
- For further adjustment, loosen the knob screw on top of the slider assembly to move the VESA mount along the slider. Then tighten the screw.



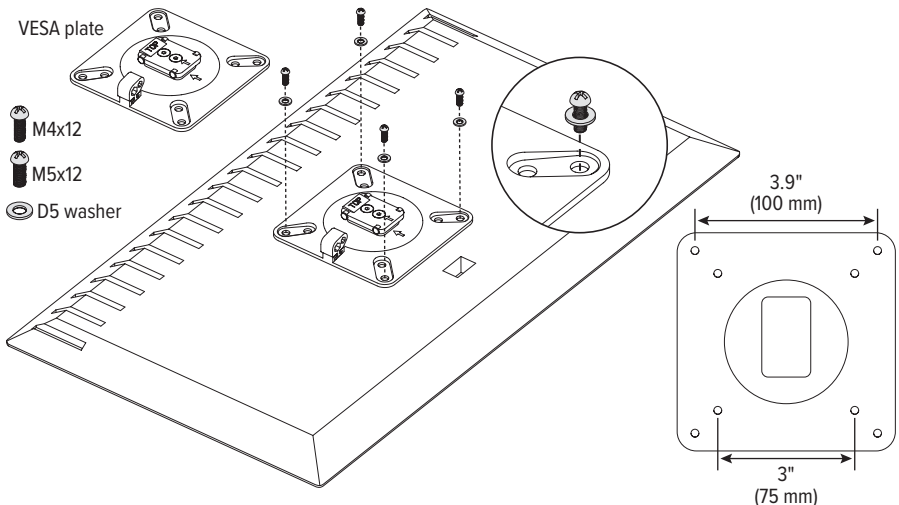
**Step #5: remove VESA plate from VESA mount**

- Remove the VESA plate from the VESA mount by pushing forward the tab at the top and lifting upward.

**Step #6: attach VESA plate to monitor**

Skip this step if you are using the original monitor with VESA plate attached.

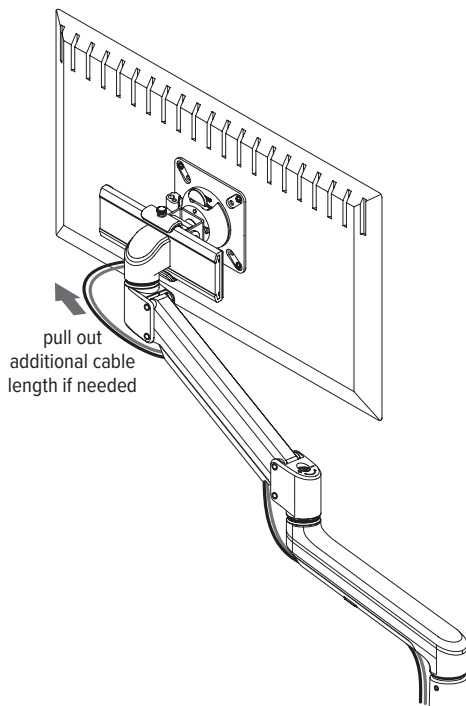
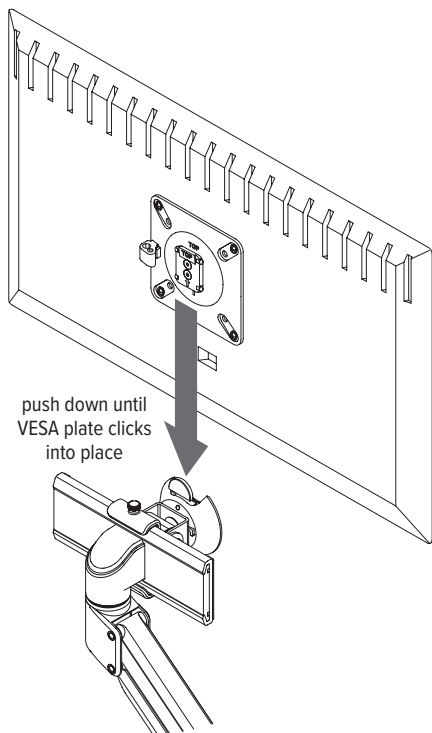
- Place the monitor face down on a flat surface. Align the VESA plate holes with the holes on the back of the monitor.
  - There are two sets of four holes on the VESA plate. One set has holes 3.9" (100mm) apart, the other set has holes 3" (75mm) apart. Use the set that matches the holes on the monitor.
- Attach the VESA plate using the VESA plate screws and D5 washers provided.
  - There are two sets of VESA plate screws: M4x12 and M5x12. Use the set that fits the holes on the monitor.
  - Use a Phillips screwdriver to install the screws.





### **Step #7: attach monitor to VESA mount**

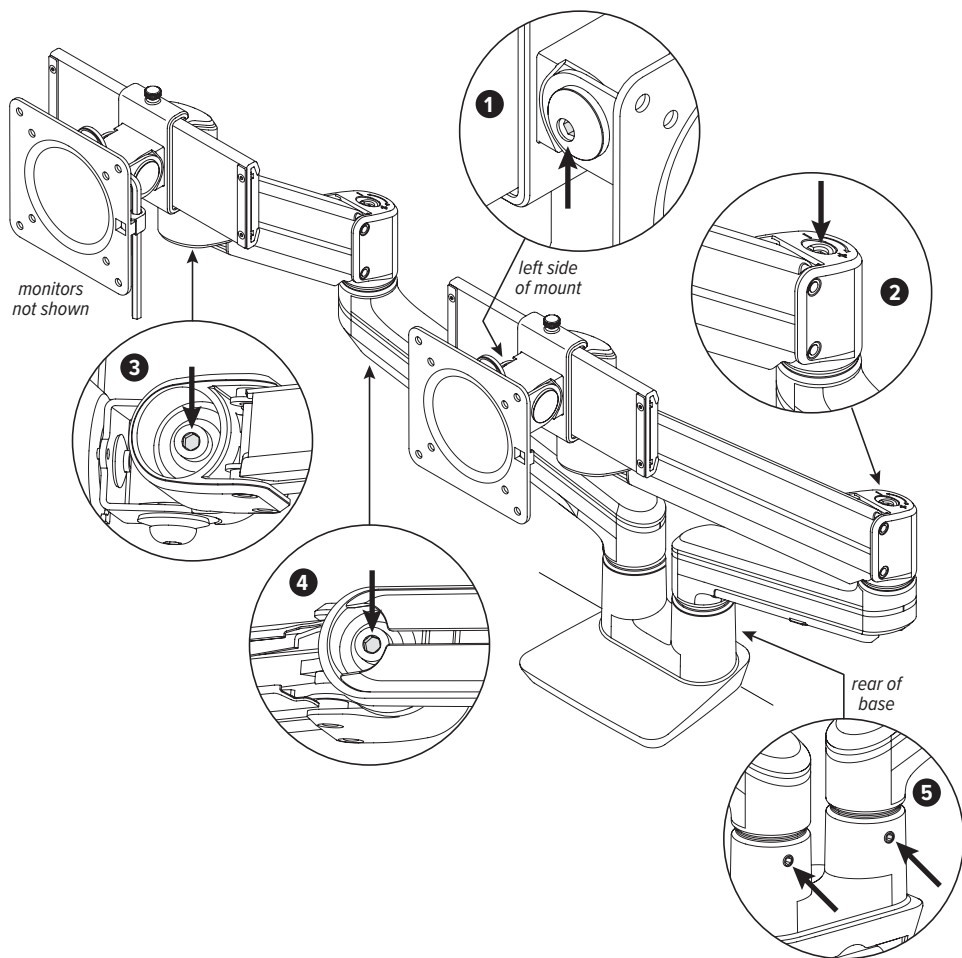
- Slide the VESA plate (with monitor attached) onto the VESA mount.
  - Push down until the VESA plate clicks securely in place.
- Reconnect the monitor cables.
  - To make the connections, it may be necessary to gently pull an additional length of cables through the cable covers and cable clips.



**Step #8: make adjustments, if necessary**

In addition to the slider mount adjustment shown in Step #4, there are several other adjustments that are the same as they were before the slider mount retrofit. Refer to the instructions that came with the original order, if necessary.

1. Monitor tilt adjustment (6mm Allen key)
2. Motion arm weight adjustment (6mm Allen key)  
*Only applies if slider mount is attached to a motion arm*
3. Monitor swivel adjustment (6mm Allen key)
4. Upper monitor arm swivel adjustment (6mm Allen key)
5. Range of rotation — tighten for 180° or loosen for 270° (3mm Allen key)





# Sena™ slider mount

VESA slider mount for Sena and SenaEx

Please contact Customer Service with any questions or comments at 800.833.3746 or visit our website at [esiergo.com](http://esiergo.com)

## LIMITED WARRANTY

ESI warrants this product to be free from defects in manufacturing for a period of 15 years from the date of original purchase. This warranty extends only to the original purchaser, and does not apply if the product has been damaged or fails to function properly as a result of misuse, abuse, modification, alteration, or improper cleaning or maintenance. This warranty does not apply to damage in shipment caused by carriers, damage caused during installation, normal wear and tear, or excessive use (meaning consistent use in excess of an eight hour shift). ANY IMPLIED WARRANTIES OF MERCHANTABILITY OR FITNESS FOR A PARTICULAR PURPOSE ARE LIMITED IN DURATION TO ONE YEAR FROM THE DATE OF ORIGINAL RETAIL PURCHASE. ESI's sole obligation under this warranty or any implied warranty, and the purchaser's sole remedy, is limited to the repair or replacement, at ESI's option, of the product or any defective part. Costs (such as installation, labor fees or express shipping) incurred due to replacement of products are not covered under warranty. IN NO EVENT SHALL FELLOWES, ITS AFFILIATES, SUBSIDIARIES, RELATED ENTITIES OR THEIR RESPECTIVE OFFICERS, DIRECTORS, OR EMPLOYEES, BE LIABLE FOR INCIDENTAL, CONSEQUENTIAL, PUNITIVE, EXEMPLARY, OR SPECIAL DAMAGES.

To make a warranty claim, contact ESI at 800-833-3746 or [customerservice@esiergo.com](mailto:customerservice@esiergo.com). You must provide proof of purchase, such as the original purchase order number.

The duration, terms and conditions of this warranty are valid worldwide, except where different limitations, restrictions or conditions may be required by local law.