

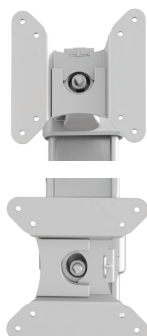


Evolve1-F

single fixed monitor arm



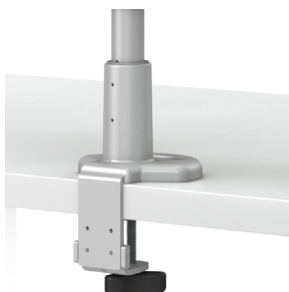
cable management



landscape/portrait rotation



grommet mount



desk clamp



VESA quick release



integrated allen key storage

Product specs

- Manual height adjustment
- Recommended for worksurfaces 24.0"–30.0" deep
- 17.3" arm extension
- 3.0" arm retraction
- +90°/-25° monitor tilt
- ±90° VESA rotation
- 0.0 lbs.–20.0 lbs. weight capacity
- 18.0" pole height
- VESA quick release
- 180° lock-out feature
- Desk clamp and grommet mount included
- Exceeds BIFMA x5.5 requirements
- Warranty 15 yr.



Model #	List price
<input type="radio"/> EVOLVE1-F-SLV	\$323
<input checked="" type="radio"/> EVOLVE1-F-BLK	\$323
<input type="radio"/> EVOLVE1-F-WHT	\$323

Evolve monitor arm key

F - Fixed monitor arm

M - Motion monitor arm

S - Slider mount

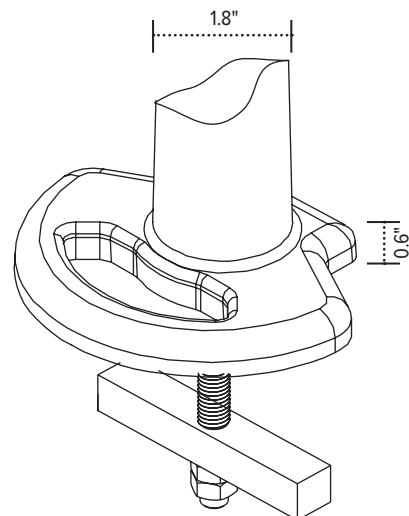
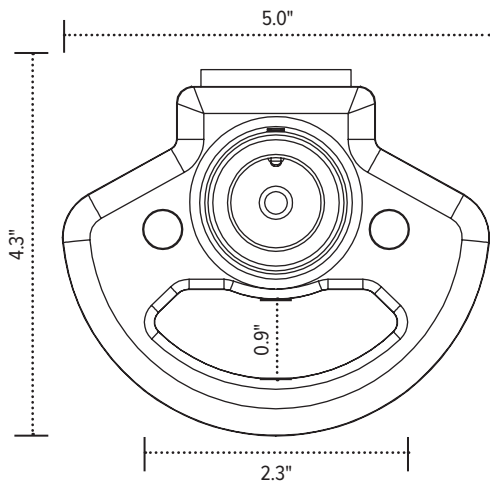
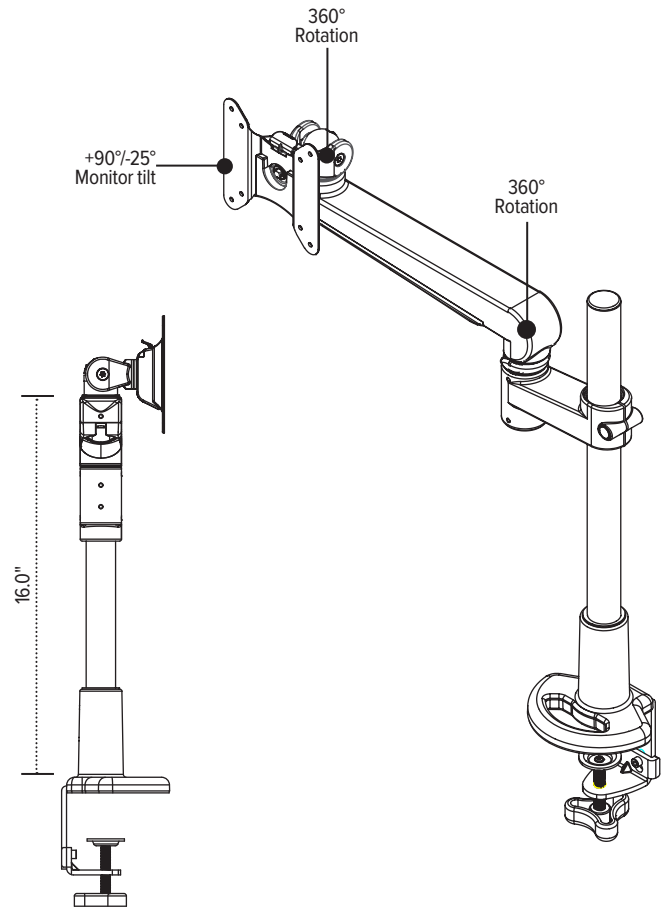
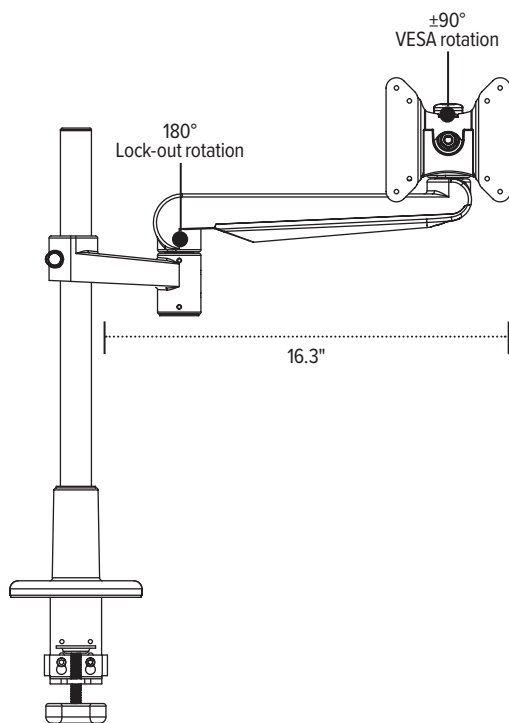
Evolve for every need

- As workstation needs change, so can the Evolve configurations. Additional components sold separately.
- Benching system mount(s) available.

Call our Customer Service Department for compatibility and pricing for custom configurations.

Evolve1-F

single fixed monitor arm



esi

800.833.3746
esiergo.com