

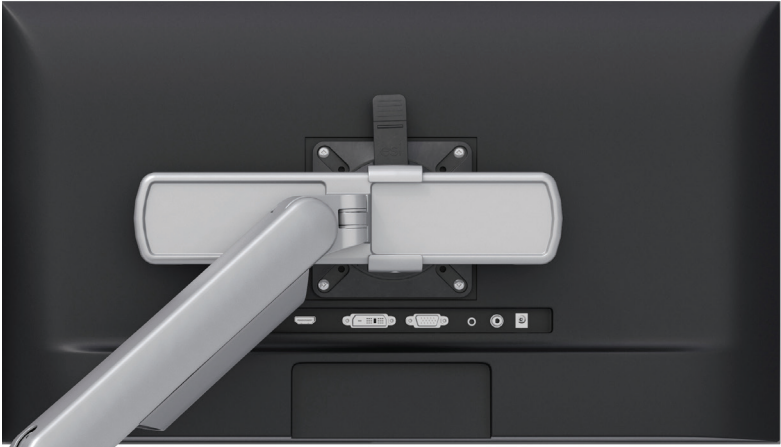
Kata™ slider mount

VESA slider

V35 - Pricing effective 6/1/2021

Kata slider mount

VESA slider



Product specs

- 9.5" adjustment from left to right
- Retrofits with the Kata™ and Kata™EX series
- Not compatible with the Eppa™, Edge®, Evolve, or Edge-Max series
- Adds an additional 1.2 lb.
- Patented design for exclusive ESI use
- Warranty: 15 yr.

| Model # | List price |
|---|------------|
| <input type="radio"/> KATA-SLD-SLV | \$170 |
| <input checked="" type="radio"/> KATA-SLD-BLK | \$170 |
| <input type="radio"/> KATA-SLD-WHT | \$170 |

Kata slider mount

VESA slider

