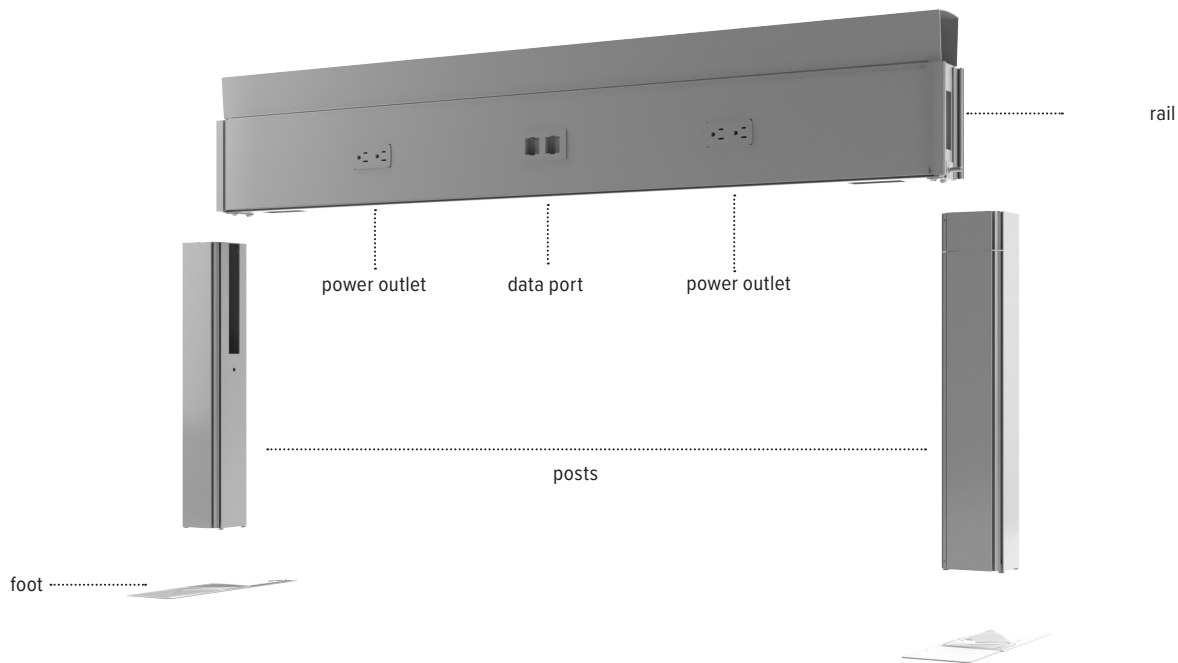




Railway™

power and data solution



Product Specs

- (4) Four available widths: 36.0" 48.0" 60.0" 72.0"
- Double and single side systems
- 18.0" post height
- 4.0"w x 12.0"d full foot - *standard*
4.0"w x 8.0"d half foot- *optional*
- Separate cable/data channel that allows for lay-in cable runs
- Up to 13 double runs or 26 single runs can be connected to each other
- Up to 8 AC power outlets per rail plus data ports
- Flexible power feeds with 3.5" of extension through flexible metal conduit
- UL listed as an Office Furnishing Accessory (UL1286), UL183, and in full compliance with NEC electrical specifications
- Optional electric compliance available for municipal standards such as NY Box, California Title 24, and Chicago
Please reference the Railway Spec Guide for more details
- 20 amps
- (4) Four circuits with 4-line conductors, 2 neutrals and 2 grounds
- Up to 13 duplex receptacles per circuit (total of 52 available duplex receptacles allowed)
- 12 AWG line conductors which share a 12 AWG ground and 10 AWG neutral
- Fourth circuit is isolated and dedicated
- Warranty: 15 yr. (*structural*) / 7 yr. (*electrical*)



Available base finishes



Silver -SLV
48"/60" ship in 48 hrs.
36"/72" LT



Black -BLK



White -WHT

LT = call for on-hand availability

Railway

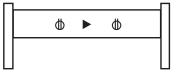
power and data solution

Model # for Linear configuration

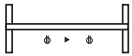
⊕ Electrical outlet(s) ▶ Data/Telephone outlet(s)

2-pack

side view



plan view



Single run



Double run

profile view



Single run
one-sided power
with T-foot.



Double run
two-sided power
with T-foot.

Single run

Rail model	List price
RAIL-KIT36-2PK-SNGL-___	\$1,419
RAIL-KIT48-2PK-SNGL-___	\$1,482
RAIL-KIT60-2PK-SNGL-___	\$1,545
RAIL-KIT72-2PK-SNGL-___	\$1,612

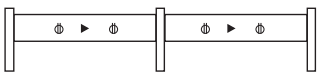
Double run

Rail model	List price
RAIL-KIT36-2PK-DBL-___	\$1,483
RAIL-KIT48-2PK-DBL-___	\$1,520
RAIL-KIT60-2PK-DBL-___	\$1,583
RAIL-KIT72-2PK-DBL-___	\$1,650

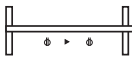
Rail kits include: rails, post kits, jumpers, and basefeed. Refer to Railway Spec guide for quantities.

4-pack

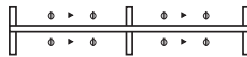
side view



plan view



Single run



Double run

profile view



Single run
one-sided power
with T-foot.



Double run
two-sided power
with T-foot.

Single run

Rail model	List price
RAIL-KIT36-4PK-SNGL-___	\$2,556
RAIL-KIT48-4PK-SNGL-___	\$2,669
RAIL-KIT60-4PK-SNGL-___	\$2,795
RAIL-KIT72-4PK-SNGL-___	\$2,929

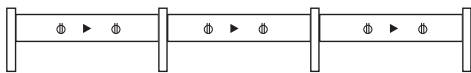
Double run

Rail model	List price
RAIL-KIT36-4PK-DBL-___	\$2,671
RAIL-KIT48-4PK-DBL-___	\$2,745
RAIL-KIT60-4PK-DBL-___	\$2,871
RAIL-KIT72-4PK-DBL-___	\$3,005

Rail kits include: rails, post kits, jumpers, and basefeed. Refer to Railway Spec guide for quantities.

6-pack

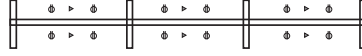
side view



plan view



Single run



Double run

profile view



Single run
one-sided power
with T-foot.



Double run
two-sided power
with T-foot.

Single run

Rail model	List price
RAIL-KIT36-6PK-SNGL-___	\$3,693
RAIL-KIT48-6PK-SNGL-___	\$3,856
RAIL-KIT60-6PK-SNGL-___	\$4,045
RAIL-KIT72-6PK-SNGL-___	\$4,246

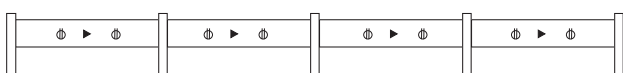
Double run

Rail model	List price
RAIL-KIT36-6PK-DBL-___	\$3,859
RAIL-KIT48-6PK-DBL-___	\$3,970
RAIL-KIT60-6PK-DBL-___	\$4,159
RAIL-KIT72-6PK-DBL-___	\$4,360

Rail kits include: rails, post kits, jumpers, and basefeed. Refer to Railway Spec guide for quantities.

8-pack

side view



plan view



Single run



Double run

profile view



Single run
one-sided power
with T-foot.



Double run
two-sided power
with T-foot.

Single run

Rail model	List price
RAIL-KIT36-8PK-SNGL-___	\$4,830
RAIL-KIT48-8PK-SNGL-___	\$5,043
RAIL-KIT60-8PK-SNGL-___	\$5,295
RAIL-KIT72-8PK-SNGL-___	\$5,563

Double run

Rail model	List price
RAIL-KIT36-8PK-DBL-___	\$5,047
RAIL-KIT48-8PK-DBL-___	\$5,195
RAIL-KIT60-8PK-DBL-___	\$5,447
RAIL-KIT72-8PK-DBL-___	\$5,715

Rail kits include: rails, post kits, jumpers, and basefeed. Refer to Railway Spec guide for quantities.

esi

800.833.3746
esiergo.com

⊕ Electrical outlet(s) ► Data/Telephone outlet(s)



T-foot

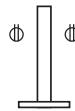


L-Foot

profile
view

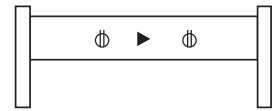


Single run



Double run

side view



Linear pre-configuration

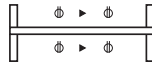
Expansion pre-configuration

Please specify either a 90° or 180° post

plan view



Single run

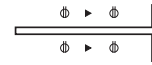


Double run

plan view



Single run

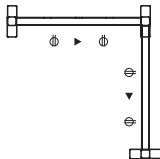


Double run

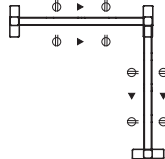
90° pre-configuration

Bullpen pre-configuration

plan view

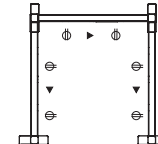


Single run

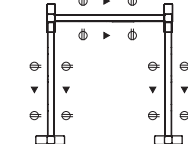


Double run

plan view



Single run

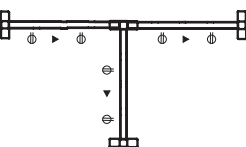


Double run

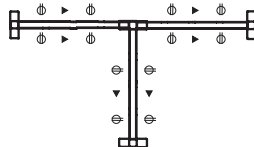
3-way pre-configuration

4-way pre-configuration

plan view

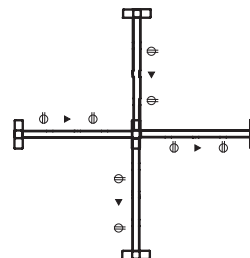


Single run

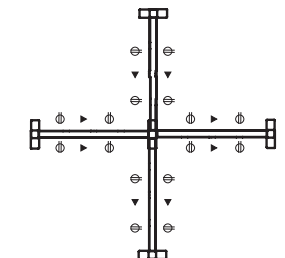


Double run

plan view



Single run



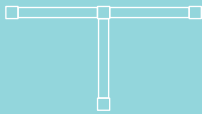
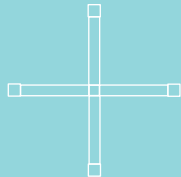



Double run

Railway

power and data solution

The table below can be used to learn the quantities of each component provided with your order. The minimum number of rails is shown for each configuration. Additional rails may be added in-line to any of them. Use the "additional rail(s)" column to calculate the number of added components per additional rail. Bullpen configurations are configured as a 90° plus an additional rail with a 90° post instead of a 180° Be sure to read the important notes under the table for further details related to the configurations.

CONFIGURATION	Linear	90°	3-way	4-way	Additional rail(s)
					
ITEM	QUANTITY				
rail	1	2	3	4	1 per rail
rail cover	1	2	3	4	1 per rail
end post	2	2	3	4	—
180° post	—	—	—	—	1 per rail for linear configuration
90° post	—	1	—	—	—
3-way post	—	—	1	—	—
4-way post	—	—	—	1	—
full or half foot	2	3	4	5	1 per rail
foot screws	8	12	16	20	4 per rail
mounting bracket	2	4	6	8	2 per rail
mounting bracket screws	6	12	18	24	6 per rail
rail connectors	4	8	12	16	4 per rail
post cap	2	3	4	5	1 per rail
receptacle	2 (single run) 4 (double run)	4 (single run) 8 (double run)	6 (single run) 12 (double run)	8 (single run) 16 (double run)	2 (single run) 4 (double run)
voice/data plate	1 (single run) 2 (double run)	2 (single run) 4 (double run)	3 (single run) 6 (double run)	4 (single run) 8 (double run)	1 (single run) 2 (double run)
voice/data adapter kit	1	2	3	4	1 per rail
jumper cable	—	1	2	3	1 per additional rail
base power feed or ceiling feed	1	1	1	1	—

esi

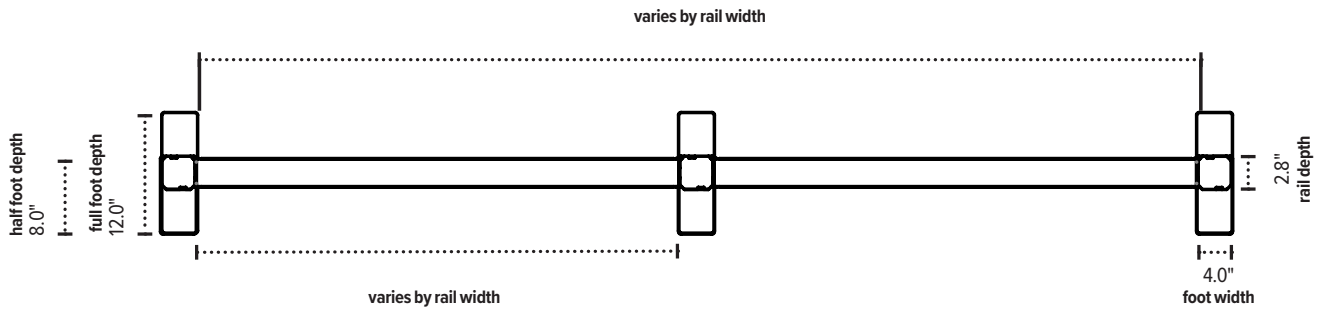
800.833.3746
esiergo.com

© 2019 Fellowes, Inc.

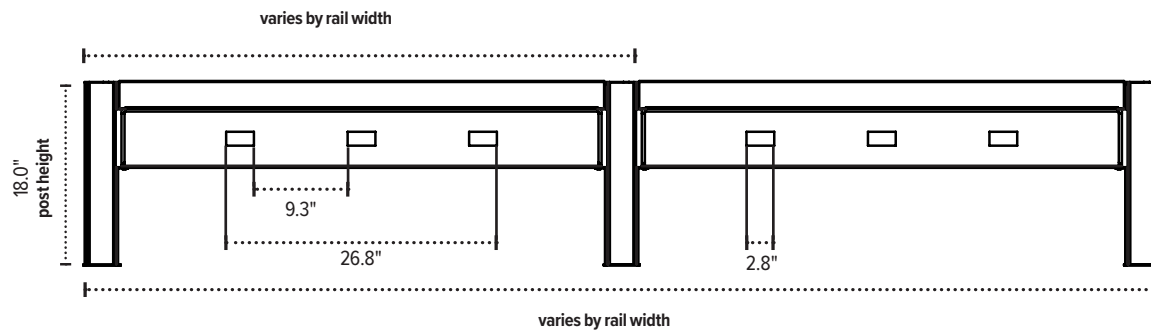
Railway

power and data solution

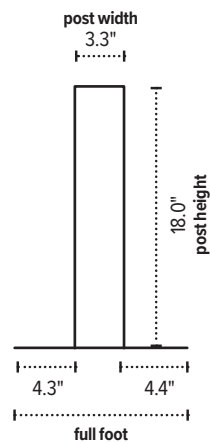
Aerial View 4-Pack



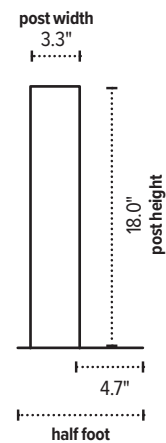
Front View 4-Pack



Profile View T-Foot



Profile View L-Foot



esi

800.833.3746
esiergo.com