

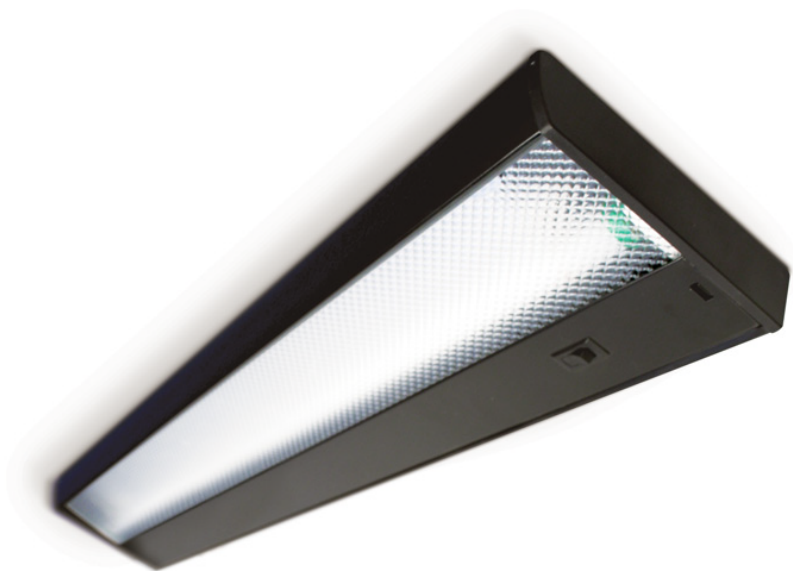
## UCLMAG

Under Cabinet Light

Model UCL24MAG-BLK

Model UCL48MAG-BLK

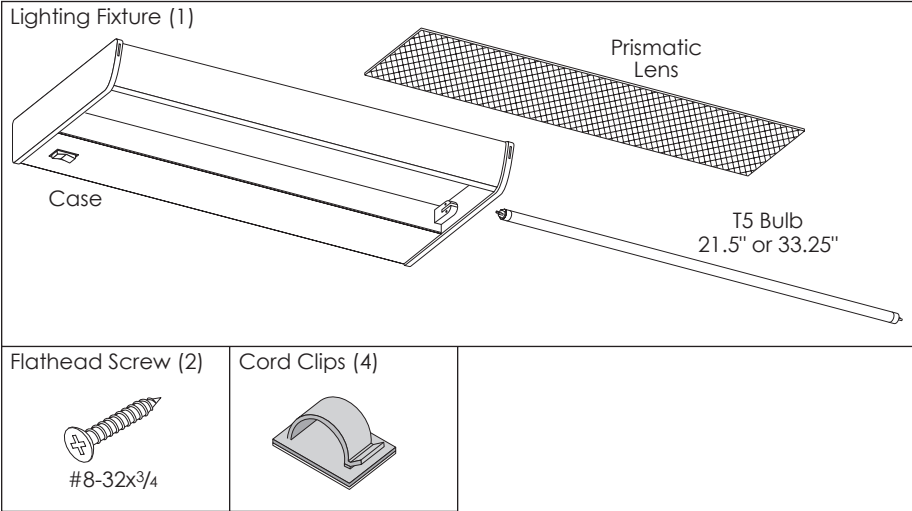
UCLMAG Rev A 4/17



## INSTALLATION AND USE

**PLEASE REVIEW** these instructions before beginning the installation. Check that all parts needed were provided with your order. Contact your supplier if any parts are missing. Do not discard the packaging until satisfied that the product operates to your satisfaction.

**PARTS PROVIDED**



**TOOLS REQUIRED** (if screw mounting)

- Power Drill
- # 2 Phillips Screw Driver Bit

Specifications
<ul style="list-style-type: none"><li>• Two lengths: 24", 48" (nominal)</li><li>• T5 fluorescent lamp</li><li>• Color temperature: 3300K</li><li>• Lumens: 24"=260, 48"=759</li><li>• Power consumption: 24"=13W, 48"=39W</li><li>• 9 ft. power cord</li><li>• Prismatic lens</li></ul>

See **IMPORTANT SAFETY PRECAUTIONS** on page 7.

### **STEP 1: Unpack Components**

- The bulb and lens are shipped with packing material inside the light fixture case. Remove these components from the case and set aside for installation later.

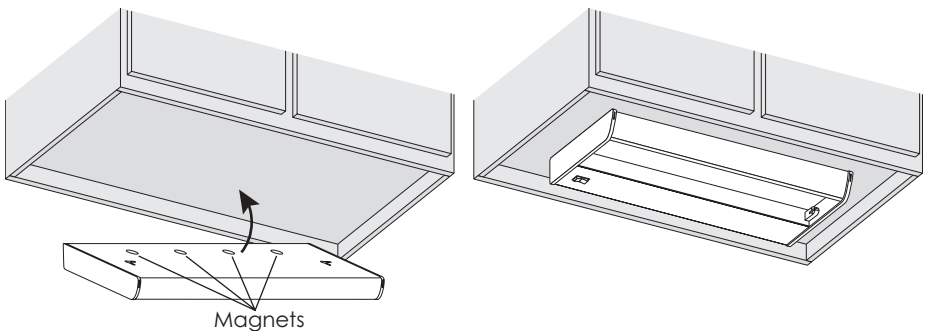
### **STEP 2: Choose a Mounting Method**

- The light fixture may be installed under the cabinet in one of three ways:
  - Magnet attachment (if the bottom of the cabinet is a steel surface).
  - Spring bar attachment.
  - Mounting with screws.
- Review STEPS 3A, 3B, and 3C to decide which method is most appropriate for your installation.

### **STEP 3A: Attach the Light Fixture Using Magnets**

- Depending on the size of the light fixture, four or six very strong magnets are built into the top of the fixture. If the bottom of the cabinet is a steel surface, the magnets can securely hold the fixture in place.
- Move the fixture slowly toward the underside of the cabinet until the magnets engage with the surface. Adjust the position of the fixture as desired.

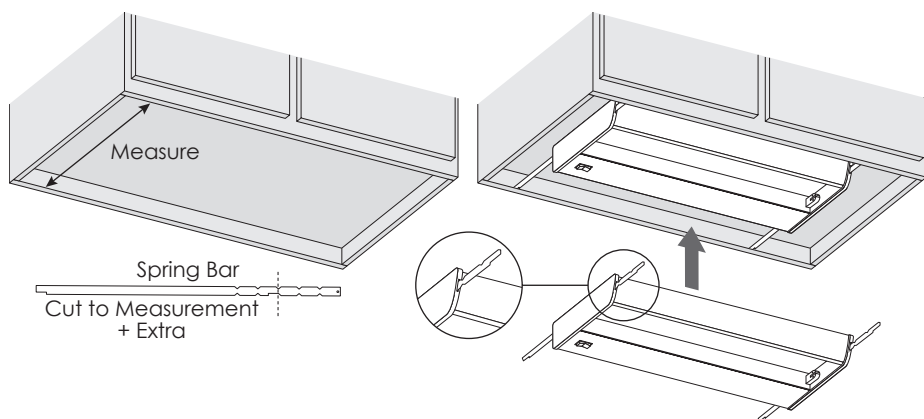
**CAUTION:** Because the magnets are very strong, fingers can be pinched suddenly between the fixture and steel surface. Hold the fixture on the outside edges. Take care not to allow your fingers to come between the fixture and the steel surface during installation.



**Proceed to STEP 4 on page 6.**

**STEP 3B: Attach the Light Fixture Using Spring Bars**

- To determine the proper length of the spring bars, measure the distance from the front to the back of the underside of the cabinet.
  - Round your measurement up so that there will be tension on the spring bars when they are fit into the underside of the cabinet.
  - Cut or break off the appropriate amount of the spring bars.
- Slide one spring bar through each end cap of the light fixture, as shown.
- Place the leading end of the spring bars on the underside of the front edge of the shelf.
- Slide the light fixture all the way forward. Push the fixture upward while flexing the spring bars toward the center so they will fit over the rear edge on the underside of the cabinet.
  - Adjust the length of the spring bars if too much flex is required to fit them in place.



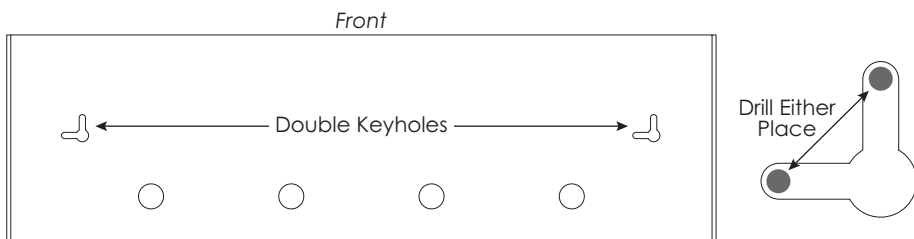
**Proceed to STEP 4 on page 6.**

**STEP 3C: Attach the Light Fixture Using Screws**

This method is used with wooden cabinets only. Check that the  $\frac{3}{4}$ " wood screws will not go all the way through the underside of the cabinet.

- With the fixture facing down, locate the two double-keyholes on the fixture's top side.
  - The screw heads will fit into the large portion of the keyhole. Then the fixture will be moved side-to-side or front-to-back to fit into one of the narrow portions.
  - Drill  $\frac{1}{8}$ " holes through the narrow portion of each keyhole where the screws will end up. You will be drilling through foiled cardboard. See the illustration on the next page.

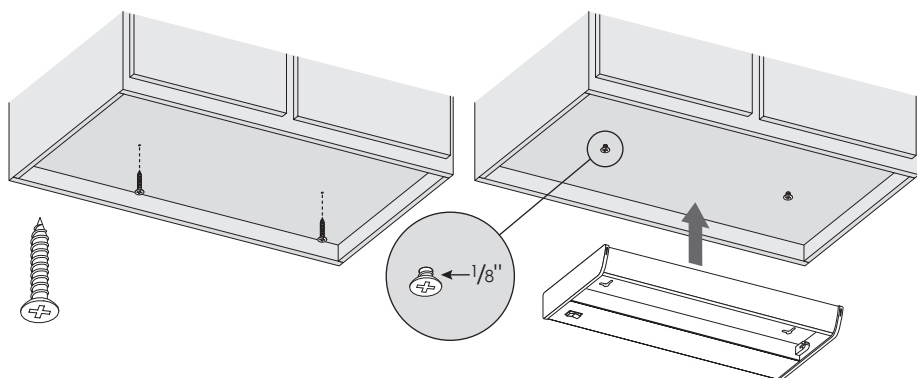
- Hold the fixture in its desired final position and mark through the drilled holes where to drill pilot holes for the two screws.
- Be sure you will have space for the required side-to-side or front-to-back movement from the large portion of the keyhole to the narrow portion.



- Drill two  $\frac{1}{8}$ " pilot holes in the marked locations,  $\frac{1}{2}$ " deep.

**CAUTION:** Be careful not to drill all the way through the underside of the cabinet.

- Drive the  $\frac{3}{4}$ " wood screws into the pilot holes, leaving approximately  $\frac{1}{8}$ " between the head of the screw and the cabinet.
- Position the fixture so that the heads of the screws pass through the large portion of the keyholes. Then slide the fixture so that the screw heads end up at the small end of the keyholes where the holes are drilled.
- Tighten the screws.



**Proceed to STEP 4 on page 6.**

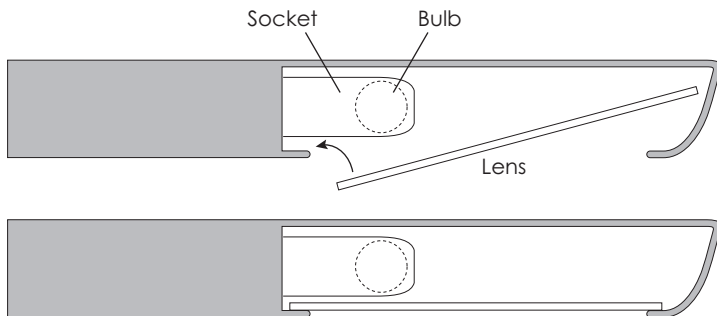
## **STEP 4: Install the Bulb and Test the Lamp**

- Install the bulb into the sockets on the sides of the light fixture.
- Plug the power cord into a standard 115VAC outlet.
- Turn on the power switch.
  - If the lamp lights, turn off the power switch and proceed to STEP 5.
  - If the lamp fails to light, check that the bulb is properly inserted.

## **STEP 5: Install the Lens**

- Slide the front edge of the lens up into the nose of the light fixture.
- Then slide the back edge of the lens between the bulb and the back ledge of the fixture, allowing the lens to set in place.

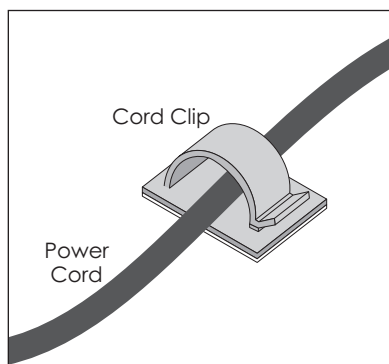
**CAUTION:** Do not force the lens into position. It could crack, creating sharp edges.



## **STEP 6: Manage the Power Cord**

- Adhere cord clips to the underside of the cabinet and other surfaces as needed to organize the power cord neatly.

**NOTE:** An additional outlet is included next to the power switch for daisy chain configurations.



**IMPORTANT SAFETY PRECAUTIONS**

Read all safety precautions and installation instructions carefully before installing or servicing this fixture. Failure to comply with these instructions could result in potentially fatal electric shock and/or property damage.

If wiring is required, it is recommended that a qualified electrician perform all wiring. This fixture must be wired in accordance with all national and local electrical codes.

Do not handle any energized fixture or attempt to energize any fixture with wet hands or while standing on a wet or damp surface or in water.

Make sure the power source conforms to the requirements of the fixture.

This unit is equipped with a three-prong grounding type plug for your protection against shock hazards. To assure proper operation, it should be plugged directly into a properly installed and grounded three-prong receptacle. Replace or repair damaged or worn cords immediately.

Protect the power cord from coming into contact with sharp objects, oil, grease, hot surfaces, or chemicals.

This fixture is intended for general indoor lighting only.



800.833.3746 | [esiergo.com](http://esiergo.com)