

Dimensions			Specify laminate (2 letter code)		Compatible table bases (As indicated by the •)								
			Model #	Standard Price	Triumph-LX	Victory-LX 2-leg	Victory-LX 3-leg	All-Flex 2-leg	All-Flex 3-leg	Premium 2-leg	Premium 3-leg	Q Crank	Espre
WL	WR	D											
72	48	30	3PL724830__	\$1,123			•		•		•		
72	60	30	3PL726030__	\$1,280			•		•		•		
84	48	30	3PL844830__	\$1,307			•		•		•		
84	60	30	3PL846030__	\$1,499			•		•		•		
84	72	30	3PL847230__	\$2,367			•		•		•		

Standard price of worksurface includes standard laminate choice with square edge profile and coordinating edge band.
Please contact the Customer Service department for pricing on non-standard profiles and laminates

Laminates

Worksurfaces - LT

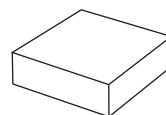
Typical lead time is 15-20 business days for production of worksurfaces. Please indicate laminate choice by adding the 2-letter code at the end of the worksurface model number. Worksurfaces are not sold separately and must be purchased with a table base. Warranty: 5 yr.

Laminate options

Worksurfaces are available in select Wilsonart® laminate options and select Formica® laminate options. Additional non-standard laminate options are available from Formica®, Nevamar®, Pionite®, and more.

Additional options are available in select styles and sizes. For more information on worksurfaces, laminate options, and edge detailing contact Customer Service. Additional cost may apply and lead time may apply.

Standard price of worksurface includes square edge profile and coordinating 3MM Edge Band.



Square edge
(standard)

EXAMPLE: How to specify your standard worksurface

1. Pick your worksurface and size
(required)

3PL726030-TT

2. Pick your laminate finish
(required)

3PL726030-TT

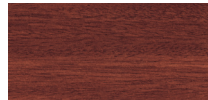
This product number represents:
Peninsula left worksurface
72.0" wide left, 60.0" wide right
30.0" deep
Wilsonart Titanium ev laminate

Laminates

Laminate images are not ideal representations of the laminate product. ESI highly recommends requesting samples from the laminate manufacturer prior to purchase.

ESI can accommodate a variety of laminates beyond our standard options. If there is a laminate you desire that is not listed please contact our Customer Service Department for more information.

Woodgrains



Color code: AH
Color name: Acajou mahogany
Finish: Matte
3mm edge band color: Classic mahogany
Manufacturer: Formica



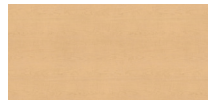
Color code: BE
Color name: Beigewood
Finish: Matte
3mm edge band color: Jute
Manufacturer: Wilsonart



Color code: BW
Color name: Brighton walnut
Finish: Fine velvet
3mm edge band color: Imperial walnut
Manufacturer: Wilsonart



Color code: CO
Color name: Castle oak
Finish: Fine velvet
3mm edge band color: Castle walnut
Manufacturer: Wilsonart



Color code: FM
Color name: Fusion maple
Finish: Matte
3mm edge band color: Norway maple
Manufacturer: Wilsonart



Color code: KM
Color name: Kensington maple
Finish: Matte
3mm edge band color: Sugar maple
Manufacturer: Wilsonart



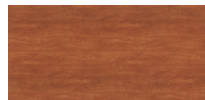
Color code: MM
Color name: Monticello maple
Finish: Fine velvet
3mm edge band color: Candlelight maple
Manufacturer: Wilsonart



Color code: SC
Color name: Shaker cherry
Finish: Matte
3mm edge band color: Kodiak brown
Manufacturer: Wilsonart

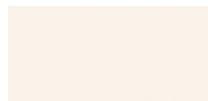


Color code: SO
Color name: Solar oak
Finish: Matte
3mm edge band color: Castle walnut
Manufacturer: Wilsonart



Color code: WC
Color name: Wild cherry
Finish: Matte
3mm edge band color: Rainier cherry
Manufacturer: Wilsonart

Solids



Color code: AW
Color name: Antique white
Finish: Matte
3mm edge band color: White sand
Manufacturer: Wilsonart



Color code: BK
Color name: Black
Finish: Matte
3mm edge band color: Black
Manufacturer: Wilsonart



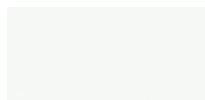
Color code: DG
Color name: Dove grey
Finish: Matte
3mm edge band color: Dove gray
Manufacturer: Wilsonart



Color code: DW
Color name: Designer white
Finish: Matte
3mm edge band color: Designer white
Manufacturer: Wilsonart



Color code: FS
Color name: Folkstone
Finish: Matte
3mm edge band color: Folkstone
Manufacturer: Formica



Color code: FW
Color name: Frosty white
Finish: Matte
3mm edge band color: Frosty white
Manufacturer: Wilsonart



Color code: NS
Color name: North sea
Finish: Matte
3mm edge band color: Shaker gray
Manufacturer: Wilsonart



Color code: PE
Color name: Pepperdust
Finish: Matte
3mm edge band color: Pepperdust
Manufacturer: Wilsonart



Color code: WS
Color name: White sand
Finish: Matte
3mm edge band color: White sand
Manufacturer: Wilsonart

Laminates

Laminate images are not ideal representations of the laminate product. ESI highly recommends requesting samples from the laminate manufacturer prior to purchase.

ESI can accommodate a variety of laminates beyond our standard options. If there is a laminate you desire that is not listed please contact our Customer Service Department for more information.

Patterns



Color code: CN
Color name: Cloud nebula
Finish: Matte
3mm edge band color: Anchor gray
Manufacturer: Wilsonart



Color code: CZ
Color name: Canyon zephyr
Finish: Matte
3mm edge band color: Dove gray
Manufacturer: Wilsonart



Color code: DZ
Color name: Desert zephyr
Finish: Matte
3mm edge band color: Jute
Manufacturer: Wilsonart



Color code: FG
Color name: Folkstone grafix
Finish: Matte
3mm edge band color: Folkstone
Manufacturer: Formica



Color code: GM
Color name: Grey mesh
Finish: Fine velvet
3mm edge band color: Pepperdust
Manufacturer: Wilsonart



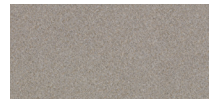
Color code: GN
Color name: Grey nebula
Finish: Matte
3mm edge band color: Summer rain
Manufacturer: Wilsonart



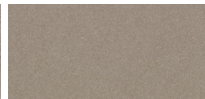
Color code: LZ
Color name: Cloud zephyr
Finish: Matte
3mm edge band color: Jute
Manufacturer: Wilsonart



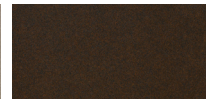
Color code: MZ
Color name: Misted zephyr
Finish: Matte
3mm edge band color: Dolphin
Manufacturer: Wilsonart



Color code: NK
Color name: Nickel ev
Finish: Matte
3mm edge band color: Anchor gray
Manufacturer: Wilsonart



Color code: NZ
Color name: Loden zephyr
Finish: Matte
3mm edge band color: Safari sage
Manufacturer: Wilsonart



Color code: OZ
Color name: Morro zephyr
Finish: Matte
3mm edge band color: French roast
Manufacturer: Wilsonart



Color code: PM
Color name: Pewter mesh
Finish: Fine velvet
3mm edge band color: Cinder
Manufacturer: Wilsonart



Color code: PZ
Color name: Spiced zephyr
Finish: Matte
3mm edge band color: Black
Manufacturer: Wilsonart



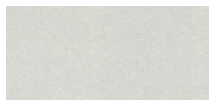
Color code: RN
Color name: Graphite nebula
Finish: Matte
3mm edge band color: Black
Manufacturer: Wilsonart



Color code: SI
Color name: Silicon ev
Finish: Matte
3mm edge band color: Brownstone
Manufacturer: Wilsonart



Color code: SM
Color name: Sheer mesh
Finish: Fine velvet
3mm edge band color: White sand
Manufacturer: Wilsonart



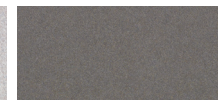
Color code: SZ
Color name: Shadow zephyr
Finish: Matte
3mm edge band color: Folkstone
Manufacturer: Wilsonart



Color code: TG
Color name: Tungsten ev
Finish: Matte
3mm edge band color: Jute
Manufacturer: Wilsonart



Color code: TT
Color name: Titanium ev
Finish: Matte
3mm edge band color: Folkstone
Manufacturer: Wilsonart



Color code: TZ
Color name: Twilight zephyr
Finish: Matte
3mm edge band color: Cinder
Manufacturer: Wilsonart



Color code: WN
Color name: White nebula
Finish: Matte
3mm edge band color: Folkstone
Manufacturer: Wilsonart



Color code: WT
Color name: White tigris
Finish: Matte
3mm edge band color: Shaker gray
Manufacturer: Wilsonart

Shipping Information

Visit esiergo.com for complete
Terms and Conditions

Shipping

48 hour ship program

ESI offers 48 hour shipping on the majority of products. Unless otherwise requested, these products are shipped from Phoenix, Arizona, within two business days of receiving the PO, depending on quantity ordered and available inventory. Orders that include products with longer lead times including special orders, custom products, or worksurface orders, are designated as "LT" (lead time) and therefore not included in the 48 hour ship program. Large orders may also require additional lead time. Products designated as LT could take up to 90 days ARO for delivery. Call for on-hand availability.

Please note:

1. For the order to qualify for 48 hour shipping, all products on the PO must be available under the 48 hour ship program.
2. POs that include LT designated products will be shipped based on the lead time of the LT designated products unless otherwise requested.
3. 48 hour orders will be shipped out within two business days unless otherwise specified on the PO.

Freight terms

ESI ships orders by way of standard ground carrier service dock-to-dock within the contiguous 48 states. Special requests such as "call before delivery", "delivery lift gate required", residential delivery, re-routed deliveries, or specific delivery date/time requests may be subject to additional charges or may not be available. Contact our Customer Service Department for expedited delivery requests or deliveries outside of the contiguous 48 states.

Customers will be charged additional fees for changes made to orders that have already departed the facility, resulting in re delivery or re-consignment.

ESI accepts requests for expedited freight at the customer's expense. Please contact our Customer Service Department at 800.833.3746 and provide your preferred carrier account number in which to charge the expedited freight.

Worksurfaces are not sold separately and must be purchased with a table base. Worksurfaces may be drop-shipped from a separate location and may arrive on a date different than the other items on the order.

Table bases- Freight is free for orders of five (5) or more table bases or table bases with worksurfaces. A \$125 freight fee will be charged for orders of four (4) or fewer table bases. For orders including worksurfaces, there will be an additional \$150 freight fee.