

Evolve1-MS

Single motion + slider monitor arm

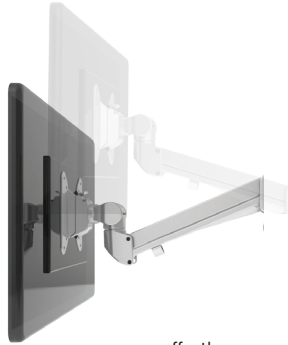


Evolve1-MS

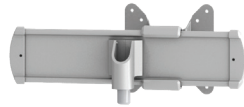
Single motion + slider monitor arm



esi®



effortless adjustment



slider



cable management



landscape/portrait rotation



grommet mount



desk clamp



integrated allen key storage



VESA quick release

Product specs

- Finger touch dynamic height adjustment
- Recommended for worksurfaces 30.0" deep or less
- 21.2" arm extension
- 6.7" arm retraction
- +80°/-60° monitor tilt
- ±90° VESA rotation
- 4.4 lb.–15.4 lb. weight capacity
- 18.0" pole height (*includes base*)
- VESA 75mm/100mm quick release
- 180° lock-out feature
- Desk clamp and grommet mount included
- Meets or exceeds BIFMA x5.5 and CSA CAN/CGSB44.227 guidelines
- Slider provides 8.5" of additional horizontal adjustability
- Patented slider design for exclusive ESI use
- Warranty: 15 yr.
-

Model

- EVOLVE1-MS-SLV
- EVOLVE1-MS-BLK
- EVOLVE1-MS-WHT

Evolve monitor arm key

F - Fixed monitor arm

M - Motion monitor arm

S - Slider mount

Evolve for every need

- As workstation needs change, so can the Evolve configurations. Additional components sold separately
- Benching system mount(s) available

Call our Customer Service Department for compatibility and pricing for custom configurations.

Evolve1-MS

Single motion + slider monitor arm

