



# Evolve28-FM

Evolve1-FM + extended pole

# Evolve28-FM

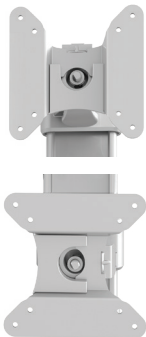
Evolve1-FM + extended pole



standard 18.0" pole shown on right



VESA quick release



landscape/portrait rotation



grommet mount



desk clamp

## Product specs

- Finger touch dynamic height adjustment
- Recommended for worksurfaces 36.0" deep or less
- 29.2" arm extension
- 4.1" arm retraction
- +90°/-25° monitor tilt
- ±90° VESA rotation
- 6.5lb.–17.6lb. weight capacity
- 30.0" pole height (includes base)
- VESA 75mm/100mm quick release
- 180° lock-out feature
- Desk clamp and grommet mount included
- Meets or exceeds BIFMA x5.5 and CSA CAN/CGSB44.227 guidelines
- Benching system mount(s) available  
Call Customer Service for details.
- Warranty: 15yr.



| Model #  | List price |
|--|------------|
| <input type="radio"/> EVOLVE28-FM-SLV            | \$490      |
| <input checked="" type="radio"/> EVOLVE28-FM-BLK | \$490      |
| <input type="radio"/> EVOLVE28-FM-WHT            | \$490      |

## Evolve monitor arm key

F - Fixed monitor arm  
M - Motion monitor arm  
S - Slider mount

## Evolve for every need

- As workstation needs change, so can the Evolve configurations. Additional components sold separately
- Benching system mount(s) available

Call our Customer Service Department for compatibility and pricing for custom configurations.

# Evolve28-FM

Evolve1-FM + extended pole

