



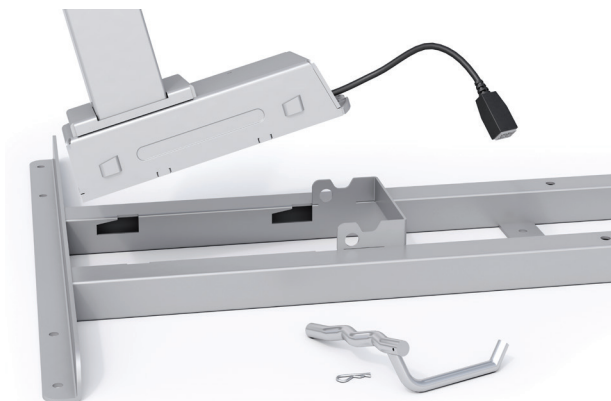
Triumph™ LX

Electric height adjustable table base

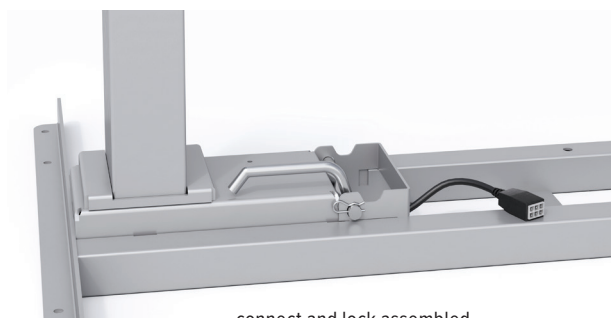
TriumphLX

Electric height adjustable table base

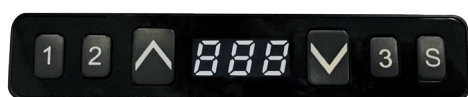
esi®



connect and lock pre-assembly



connect and lock assembled



digital keypad



drawers easily slide over feet



locking casters

Product specs

- Electric height adjustment
- 250 lb. base lifting capacity
- 1.4"/sec. adjustment speed
- 17.0" height adjustment range
 - 26.5"–43.5"(low/high) (*excluding worksurface*)
- Two stage adjustable legs
- C-leg
- Frame and column connect and lock for quick and easy assembly
- Adjustable width frame accommodates worksurfaces 36.0"–72.0"
- Two motors
- Digital keypad with three memory settings
- Soft start and stop
- Gyro sensor anti-collision
- Locking casters are available
- ADA compliant
- 8'9" power cord
- Steel frame and foot construction
- Works with peds or storage with 23.5" max. height
- Low standby power consumption
- Meets or exceeds BIFMA x5.5 guidelines
- Keypad can slide under worksurface to store out of the way
- Complete tables available (*base and top*)
- Warranty: 15 yr. (*structural*)/7 yr. (*mechanical*)

Available base finishes

- ☐ Silver -SLV
- ☒ Black -BLK
- ☐ White -WHT

Caster Kit

- Set of four casters for table base
- Increases height by 2.0"
- Locking casters for security

Model # CASTERKIT-LX-2LEG **\$59**

TriumphLX

Electric height adjustable table base



Complete quick ship table model # breakdown

2T__-R4824-QS-T__

a b c d e f g h i

a: number of legs
b: type of table base
c: finish of base
d: worksurface shape
e: worksurface width
f: worksurface depth
g: quick ship indicator
h: laminate material
i: laminate color

48.0" x 24.0" quick ship complete table

- TriumphLX 2-leg table base with a 48.0"w x 24.0"d rectangle TFL worksurface

MODEL # 2T__-R4824-QS-T__ \$1,356

60.0" x 30.0" quick ship complete table

- TriumphLX 2-leg table base with a 60.0"w x 30.0"d rectangle TFL worksurface

MODEL # 2T__-R6030-QS-T__ \$1,469

base finish notation

laminate color notation

Available base finishes

☐ Silver -S

☐ Black -B

☐ White -W

Available TFL quick ship laminates

☐ Beigewood -BG

☐ Phantom Charcoal -PC

☐ Shadow Oak -SO

☐ Designer White -DW

☐ Grey -GR

☐ Dove Grey -DV

TriumphLX table

Quick ship complete table options include: silver, black, or white table bases; 48.0"w x 24.0"d or 60.0"w x 30.0"d rectangle worksurfaces; all six TFL laminates. Quick ship worksurfaces will be pre-drilled to accommodate the TriumphLX table base. For all other combinations, please call our Customer Service Department for the estimated lead time and cost.

Multiple worksurface shapes and laminates are available. See Complete Table and Worksurface Guide for worksurface details including laminate colors.

TriumphLX

Electric height adjustable table base



Table bases		Available worksurfaces					
Table base model	List price	Worksurface shape	Worksurface dimension	TFL standard		HPL standard	HPL premium
				Quick ship	Standard ship	Standard ship	Standard ship
2T-LX-C36-24-___	\$1,071		36"w x 24"d	—	2R3624-TFL-__ \$211	2R3624-HPL-__ \$309	2R3624-PHPL-__ \$338
			42"w x 24"d	—	2R4224-TFL-__ \$250	2R4224-HPL-__ \$357	2R4224-PHPL-__ \$389
			48"w x 24"d	2R4824-QS-TFL-__ \$285	2R4824-TFL-__ \$285	2R4824-HPL-__ \$398	2R4824-PHPL-__ \$433
2T-LX-C48-24-___	\$1,071	<div style="display: flex; align-items: center;"> <div style="border: 1px solid black; width: 20px; height: 10px; margin-right: 5px;"></div> <div style="display: flex; flex-direction: column; align-items: center;"> <div>D</div> <div>W</div> </div> </div> Rectangle	60"w x 24"d	—	2R6024-TFL-__ \$340	2R6024-HPL-__ \$477	2R6024-PHPL-__ \$520
			72"w x 24"d	—	2R7224-TFL-__ \$426	2R7224-HPL-__ \$522	2R7224-PHPL-__ \$568
			36"w x 30"d	—	2R3630-TFL-__ \$238	2R3630-HPL-__ \$340	2R3630-PHPL-__ \$371
2T-LX-C36-30-___	\$1,071		42"w x 30"d	—	2R4230-TFL-__ \$261	2R4230-HPL-__ \$375	2R4230-PHPL-__ \$409
			48"w x 30"d	—	2R4830-TFL-__ \$311	2R4830-HPL-__ \$477	2R4830-PHPL-__ \$470
			60"w x 30"d	2R6030-QS-TFL-__ \$398	2R6030-TFL-__ \$398	2R6030-HPL-__ \$500	2R6030-PHPL-__ \$545
2T-LX-C48-30-___	\$1,071		72"w x 30"d	—	2R7230-TFL-__ \$454	2R7230-HPL-__ \$545	2R7230-PHPL-__ \$594

Worksurface Program

Multiple worksurface shapes and laminates are available. See the Complete Table & Worksurface Ordering Guide for worksurface details including pricing and laminate colors. TFL quick ship worksurfaces are shipped out in 48 hours, TFL standard and HPL standard/premium worksurfaces ship within three weeks. Lead time may vary depending on quantities ordered and their availability

Table bases and worksurfaces can be purchased independently or as a combination.

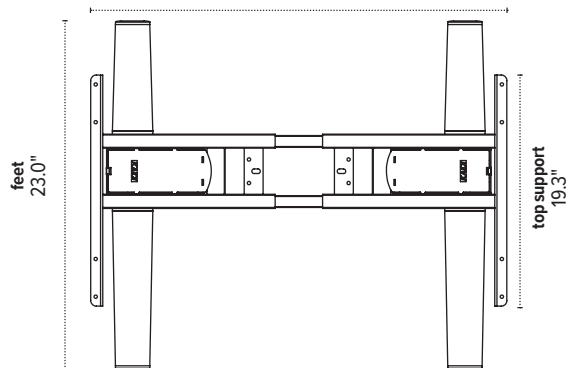
ESI worksurfaces are made to exact dimensions. If nominal sizing is needed, please specify when ordering.

TriumphLX

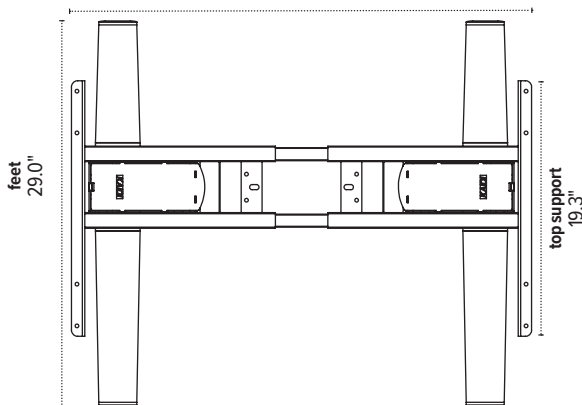
Electric height adjustable table base



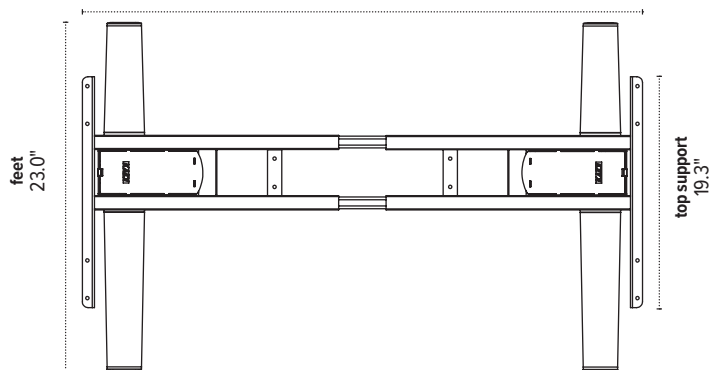
2T-LX-C36-24
adjustable width
30.6"–47.5"



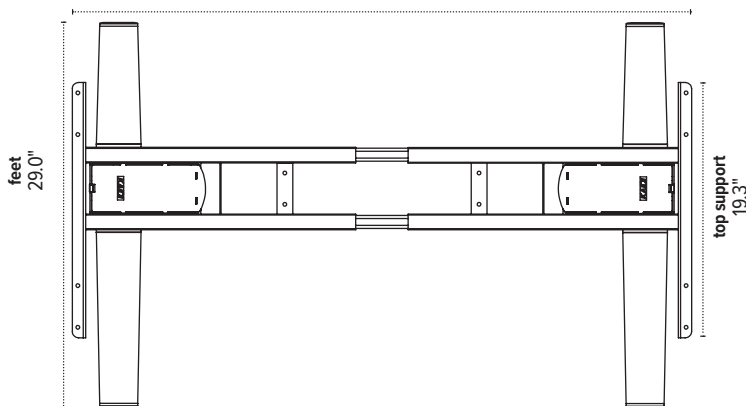
2T-LX-C36-30
adjustable width
30.6"–47.5"



2T-LX-C48-24
adjustable width
42.5"–71.5"



2T-LX-C48-30
adjustable width
42.5"–71.5"



The base dimensions as shown are actual.