



esi

Healthcare  
Solutions







# esi

## Who we are



At ESI, we design products for the movers and shakers of this world—work gear that keeps you active, healthy, focused, productive, and engaged, every single day. The pace of business is faster than ever, but we're here to propel you forward at work, at home, and in between.

Geared for today's fast-paced lifestyle, our extensive catalog of work gear will empower you to be energized and productive.



# The ESI Difference

## Customer Service Department

Toll Free: 800.833.3746

[customerservice@esiergo.com](mailto:customerservice@esiergo.com)

Live chat at [esiergo.com](https://esiergo.com)

Please e-mail your orders to [orders@esiergo.com](mailto:orders@esiergo.com)

## Award-winning service

Our customer obsessive, award-winning team is on call to assist you with all your work gear needs. We are ready to answer your questions or recommend products that help you achieve your best.

## 48 hour shipping

We can fulfill orders in as little as 48 hours based on product on-hand availability. We do this by maintaining high levels of our most popular products so you can meet ambitious deadlines and schedules. Our exceptional fulfillment service ensures you get the products you want, when you want them. Unless otherwise specified, most of ESI's products ship within two business days after your order is placed and acknowledged.

## Lead time

The **LT** product marker indicates that the lead time may vary depending on quantities ordered and their availability. Please contact our Customer Service Department for on-hand inventory when placing orders for products marked with LT. Purchase Orders that include LT designated products will be shipped based on the lead time of the LT designated products. Split shipments are available for orders that include both LT and non-LT products.

## 15 year warranty

Our work gear is backed by an industry-leading 15 year product warranty – giving you confidence to take on your work, your way. View our full warranty policy at [esiergo.com](https://esiergo.com) or contact our Customer Service Department for more information.

## Reserved inventory

Our team is focused on helping you execute large projects on time. We offer a Reserved Inventory Program for projects totaling at least \$15,000 net. Find out how the Reserved Inventory Program can help make your project a success by contacting our Customer Service Department.

## General information

All prices in the catalog are effective July 16, 2018, and are list price. All measurements are accurate within 0.25". Visit our website for additional specs, dimensional drawings, alternative images and more resources for all of ESI's products.

## Sustainability

Sustain and strengthen our environment with ESI. Our company is dedicated to selecting products and adopting forward-thinking procedures that support sustainability. We consider people and our planet with everything we do—from selecting product materials, to recycling programs and our facility operations. When you choose ESI, you are choosing to support our proactive approach to creating quality work gear that also works for the environment.



# Government

ESI is proud to provide ergonomic work gear to federal, state, and local governments.

Visit [esiergo.com](https://esiergo.com) for a complete list of our government contracts and Cooperative Purchasing Agreements. Or contact our Customer Service Department.

The products available through GSA are designated as 



## Important government numbers

CONTRACT: GS-28F-0028Y

FSC GROUP 71 Office Furniture

SIN 711-2: Worksurfaces, workstations, computer furniture and accessories

SIN 711-11: Tables and accessories

# Wall-mounted work gear

Deliver work gear in limited spaces with wall-mounted solutions. Ideal for multiple users in community spaces, wall mounted work gear increases efficiency, productivity, and collaboration. Amplify your team's productivity with gear tailored for your space.



*Product shown: Titan2-Edge*



## Titan-Edge

Single track-mounted workstation

**\$1,217**

MODEL # TITAN-EDGE

Keyboard arm and monitor arm can be positioned anywhere along the wall track

For left or right-handed users

Keyboard tray folds up or down to save space

Edge® monitor arm

(1) One 31.5" aluminum alloy wall track

Includes track covers to conceal cords



## Titan2-Edge

Dual track-mounted workstation

**\$1,410**

MODEL # TITAN2-EDGE

Keyboard arm and monitor arm can be positioned anywhere along the wall track

For left or right-handed users

Keyboard tray folds up or down to save space

Edge® monitor arm

(2) Two 31.5" aluminum alloy wall tracks (63.0" total)

Mini CPU holder (PAC-CPUMINI)

Includes track covers to conceal cords



## Additional accessories

### Mini CPU holder

Titan-Edge small CPU holder

**\$100**

MODEL # PAC-CPUMINI

3.3"–6.0" adjustable width

55 lbs. load capacity

Fits CPUs 5.0"–20.0" in overall height

Compatible only with the Titan-Edge



### Locking CPU holder

Titan-Edge CPU holder

**\$445**

MODEL # PAC-CPULOCK **LT**

3.5"–9.3" adjustable width

12.5"–22.5" adjustable height

85 lbs. load capacity

Heavy duty knob with special hex key

Compatible only with the Titan-Edge





# Work gear on wheels

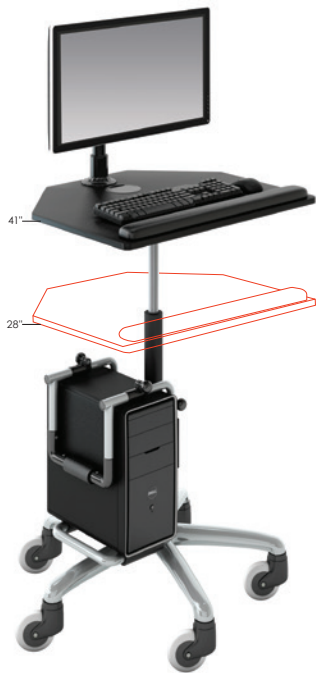
Built-in wheels make this convenient equipment portable and easy to move so you can keep technology accessible for an efficient work environment.



Product shown: WOW



Product shown: WOW01



## WOW

Complete workstation-on-wheels

**\$1,423**

MODEL # WOW

Pneumatic lift platform with wire controller  
 5-star base with heavy-duty casters *(2 locking)*  
 Includes cable management system  
 13.0" height adjustment for platform  
 28.0"–41.0" (low/high)  
 26.5"w x 22.5"d platform measurement  
 28.0" diameter base measurement  
 20 lbs. weight capacity *(including surface)*  
 Platform with palm rest  
 Fixed monitor mount  
 CPU holder  
 13.0"–21.0" adjustable height  
 2.5"–8.3" adjustable width  
 50 lbs. capacity



## WOW01

Base model workstation-on-wheels

**\$921**

Model # wow01

Pneumatic lift platform with wire controller  
 5-star base with heavy-duty casters *(2 locking)*  
 Includes cable management system  
 13.0" height adjustment for platform  
 28.0"–41.0" (low/high)  
 26.5"w x 22.5"d platform measurement  
 28.0" diameter base measurement  
 20 lbs. weight capacity *(including surface)*  
 Additional accessories available



## Additional accessories

### CPU holder

Specifically for workstation-on-wheels

**\$241**

MODEL # WOW-CPU

Adjustable CPU holder for WOW

Non-porous foam material prevents CPU damage

Can be cleaned and sanitized to maintain a germ-free environment

50 lbs. capacity

13.0"–21.0" adjustable height

2.5"–8.3" adjustable width

Compatible only with the WOW/WOW01



### Monitor mount

Fixed height monitor arm for workstation-on-wheels

**\$201**

MODEL # WOW-MR


+90°/-25° monitor tilt

90° portrait/landscape adjustment

90° side-to-side rotation

Compatible only with the WOW/WOW01

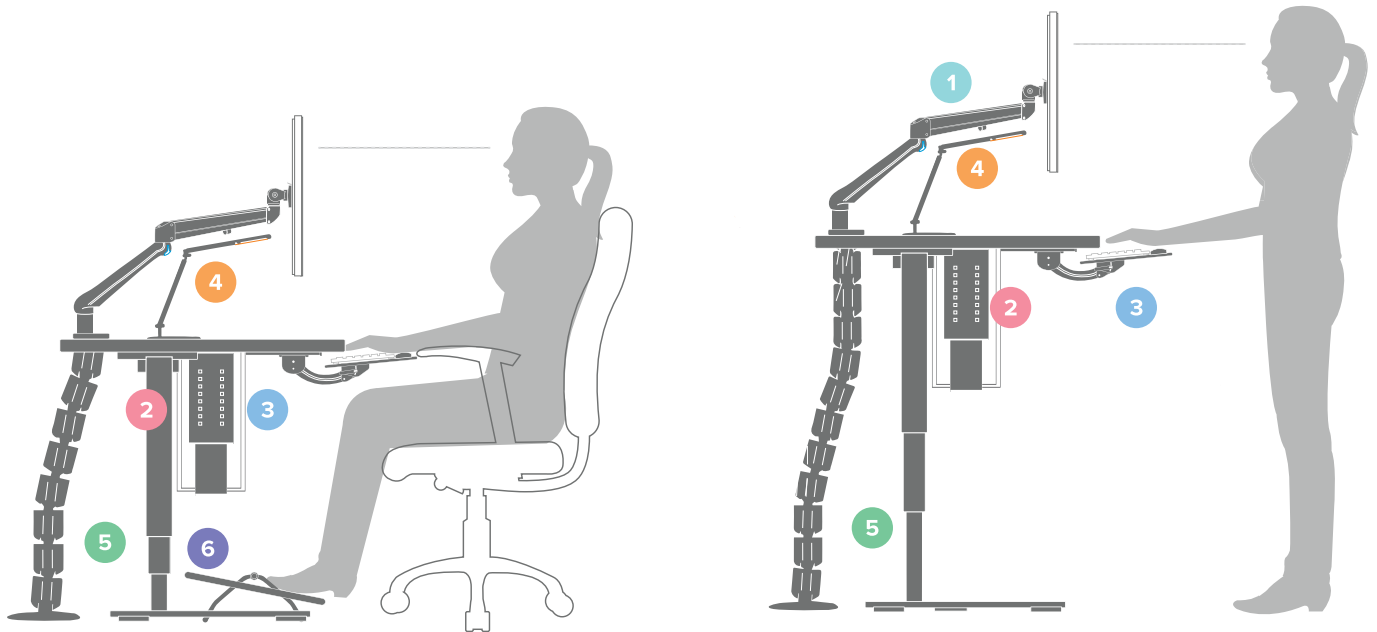




Create high performance work environments with work gear that enhances worker comfort and productivity.



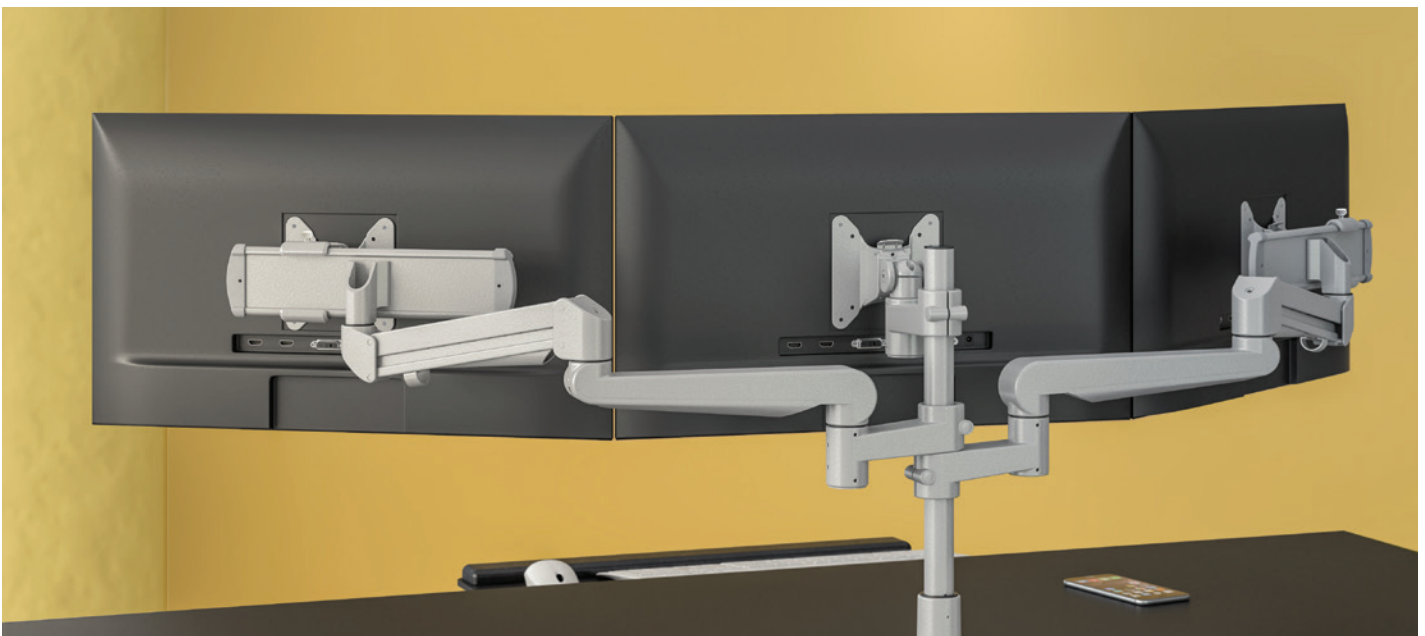
# Ergonomic guidelines



- 1 Adjustable monitor arms** help eliminate the tendency to sit in awkward positions by maintaining the proper viewing distance, height and angle of the monitor. Monitor arms keep the neck, shoulders and back in the proper posture to reduce muscle fatigue. They also free up the workspace to reduce clutter and increase efficiency and collaboration. Using dual monitors can increase productivity over a single monitor.
- 2 CPU holders** raise the CPU off the floor, making them easier for the user to reach and reducing the tendency to stretch into an awkward position. CPU holders also help free up workspace as well as leg room in user's workstation.
- 3 Adjustable keyboard platforms** help maintain a neutral wrist position and eliminate strain, improper posture, and discomfort. Proper keyboard positioning can help eliminate musculoskeletal disorders.
- 4 Adjustable task lighting** gives the user maximum control of their own workspace lighting for optimal comfort, and help reduce eyestrain and fatigue. Energy efficient lights can reduce energy consumption and costs.
- 5 Height adjustable workstations** give users the flexibility to change positions frequently and easily throughout the day, which improves health and productivity.
- 6 Footrests** can help decrease circulation problems that can occur from long periods of sitting or inactivity. By supporting the legs, footrests can relieve pressure on the lower back.

# Monitor arms

Adaptable for any workspace, flexible monitor arms can optimize your desk space and increase your productivity. Easily adjust up to six monitors to maximize comfort and efficiency. Configurations grow with you, so your monitors will keep pace with your needs.



Product shown: (Top Left) Eppa2, Triumph-LX (Top Right) Edge2-MS (Bottom) Evolve3-FMS

# Eppa™ Series



## Eppa

Single monitor arm

**\$254**

MODEL # EPPA-SLV



## Eppa2

Dual monitor arm

**\$497**

MODEL # EPPA2-SLV

### Available arm finishes

● Silver -SLV

### Height adjustment

Beneath the Eppa's minimal design is a reliable and smooth finger touch gas spring adjustment control that supports an 10.5 inch dynamic height adjustment range

### Retraction

Retracting to a four inch depth and extends 21.2 inches, Eppa offers a comfortable viewing distance no matter the size of the workstation

### Conversion

Reuse most of the parts in your single Eppa arm when you convert up to the dual Eppa2 with our simple kit. Conversion kit sold separately

### BIFMA

Exceeds BIFMA x5.5 requirements

### Eppa conversion kit

Converts an existing Eppa single monitor arm to an Eppa2 dual arm.

Kit includes:

- (1) one single arm
- (1) one desk stand
- (1) one clamp and grommet mount

**\$263**

MODEL # EPPA2KIT-SLV

*Available in silver*

# Edge® Series



## Edge

Single monitor arm

**\$346**

MODEL # EDGE-\_\_ \_\_



## Edge2

Dual monitor arm

**\$651**

MODEL # EDGE2-\_\_ \_\_



## Edge-Wall

Wall-mounted single monitor arm

**\$351**

MODEL # EDGE-WALL-SLV



### Available arm finishes

● Silver -SLV

● Black -BLK **LT**

○ White -WHT **LT**

### 180° lock-out

Prevents the arm from getting pushed back too far and bumping into a rear cubicle, wall or glass

### VESA quick release

Quickly install and swap monitors with the quick release VESA plate

### Dual Monitor Arms

Can support two monitors up to 41.5 inches wide

### BIFMA

Exceeds BIFMA x5.5 requirements

### Edge conversion kit

Converts an existing Edge single monitor arm to an Edge2 dual arm.

Kit includes:

(1) one single arm

(1) one desk stand

(1) one clamp and grommet mount

**\$263**

Model # EDGE2KIT-\_\_ \_\_

Available in silver, black, and white



# Evolve Series



## Evolve1-F

Single fixed monitor arm

**\$299**

MODEL # EVOLVE1-F-\_\_ \_



## Evolve1-M

Single motion monitor arm

**\$378**

MODEL # EVOLVE1-M-\_\_ \_



## Evolve2-FMS

Dual fixed + motion + slider monitor arm

**\$863**

MODEL # EVOLVE2-FMS-\_\_ \_



## Evolve2-MS


Dual motion + slider monitor arm


**\$757**


MODEL # EVOLVE2-MS-\_\_ \_



### Available arm finishes

 Silver -SLV

 Black -BLK **LT**

 White -WHT **LT**

### Evolve motion arms

Evolve configurations that include a motion arm (M) offer finger touch dynamic height adjustment. That means the monitor can reposition up and down with ease

### Evolve fixed arms

Evolve configurations using only fixed arms (F) have manual height adjustment. They rotate left and right along the pole, offering flexibility with lateral adjustments

### Slider mount

Position virtually any monitor side-by-side with a slider. The slider (S) offers nine inches of horizontal adjustability, so even monitors of varying sizes can be positioned flush

### Flexible growth

Because the Evolve is pole mounted, arms can be added as needed to support additional monitors

### Customize the Evolve

As workstation needs change, so can the Evolve configurations. Additional components are sold separately.

Motion arms  
Fixed arms  
Stubby arms  
28.0" pole  
Slider mounts

*Contact our Customer Service Department for compatibility and pricing for custom configurations*

### Evolve conversion kit - 1MS2MS

Converts an existing Evolve1-MS single monitor arm to an Evolve2-MS dual arm.

Kit includes:

- (1) One slider
- (1) One single motion arm
- (1) Arm stem

**\$325**

MODEL # EVOLVEKIT-1MS2MS-\_\_ \_

*Available in silver, black and white*

Visit our website for additional specs, dimensional drawings, alternative images and more resources for all of ESI's products.

# Sit-to-stand workstations

Stay comfortably on the move with desks that quickly and easily adjust to the best height for you. Sit-to-stand workstations support monitors or laptop computers, and feature built-in keyboard platforms. Any fixed-height workstation can be easily retrofitted to offer adjustable height options, so you can keep your momentum and your mobility.



Product shown: Eppa2, S2S, FlexCharge4



## S2S

Sit-to-stand workstation

**\$660**

MODEL # S2S-BLK



### Vertical motion

Straight vertical travel increases stability of work gear and technology

### Precision positioning

Moves all of the workstation essentials in one fluid motion, stopping at any point along the way

### Weight adjustment

Weight adjustable counterbalance pneumatic lift capability; built-in tension adjustment makes even heavy loads easy to lift with one hand. Tension is pre-set to lift 22 lbs.

### Add monitor arms

Compatible with Eppa, Edge and Evolve single and dual monitor arms. *Monitor arms sold separately*



## Climb

Single monitor arm sit-to-stand workstation

**\$804**

MODEL # CLIMB1-SLV



### Flexible positioning

Utilize your complete worksurface area by rotating the workstation side-to-side with the articulating arm. Single monitor arm integration allows monitor to be rotated for view in landscape or portrait orientation

### Palm rest

Includes palm rest, adaptable for left or right-handed users on the keyboard platform

Pneumatic height adjustment

Clamp mount to worksurface

Cable management



## Climb2

Dual monitor arm sit-to-stand workstation

**\$960**

MODEL # CLIMB2-SLV



### Charging station

Integrated 2-port USB station also features wireless charging for Qi-enabled devices; rear USB ports

### Microban® Antimicrobial

Powerful, continuous product protection against bacteria

### Smooth Lift Technology™

Patented pending design with easy dial weight adjustment

### Waterfall design

Allows users to prop up a phone, notepad or documents

### Height adjustment

Features 22 different height settings and 17 inches of vertical adjustment for ideal positioning



## Lotus DX

Sit-to-stand workstation

**\$968**

MODEL # LOTUS-DX-\_\_\_



# Height adjustable tables

Keep moving throughout your day with height adjustable tables. Sit or stand options can be quickly and easily tuned to your comfortable height. Adaptable for any workspace, these tables can be used for workstations, individual offices, training rooms, and open environments. Options include electric, pneumatic, and crank bases, with two or three-leg configurations.



*Product shown: All-Flex 3-leg, Evolve2-M, Solution Ultra, CPU05, FlexCharge4, Lustre, Conceal*



*Product shown: Triumph-LX, Eppa2, Pixie LEDX, Solution1, CPU-01, Centro*





### All-Flex 3-Leg

Electric height adjustable table

**\$2,299**

MODEL # FLEX3-\_\_ \_\_



### All-Flex 2-Leg

Electric height adjustable table

**\$1,521**

MODEL # FLEX2-\_\_ \_\_



### Triumph-LX 2-leg

Electric height adjustable table

**\$872**

MODEL # 2T-LX-\_\_-\_\_-\_\_-\_\_



#### Electric motors

Includes two motors (2-leg) and three motors (3-leg) allowing smooth height adjustment while supporting a broad range of worksurface weights

#### Versatility and flexibility

Provides adjustable cross channels, top supports and feet making it one of the most adjustable table bases on the market

#### One part number

All-Flex uses only one part number for all 2-leg sizes and all 3-leg sizes and configurations

#### Keypad

Includes a digital keypad with four memory settings

#### 3-leg Configurations

Can be configured for 90° or 120° with a universal bracket

#### Available base finishes

● Silver -SLV

● Black -BLK **LT**

○ White -WHT **LT**

Locking casters available

#### Two motors

Includes two motors allowing smooth height adjustment while supporting a broad range of worksurface weights

#### Cross channels

With adjustable cross channels, the table base can adapt over time with the changing technology and work gear needs of the user

#### Keypad

Includes a digital keypad with three memory settings

#### Quality materials

Steel frame and foot construction offers outstanding stability

#### BIFMA

Exceeds BIFMA x5.5 requirements

#### Available base finishes

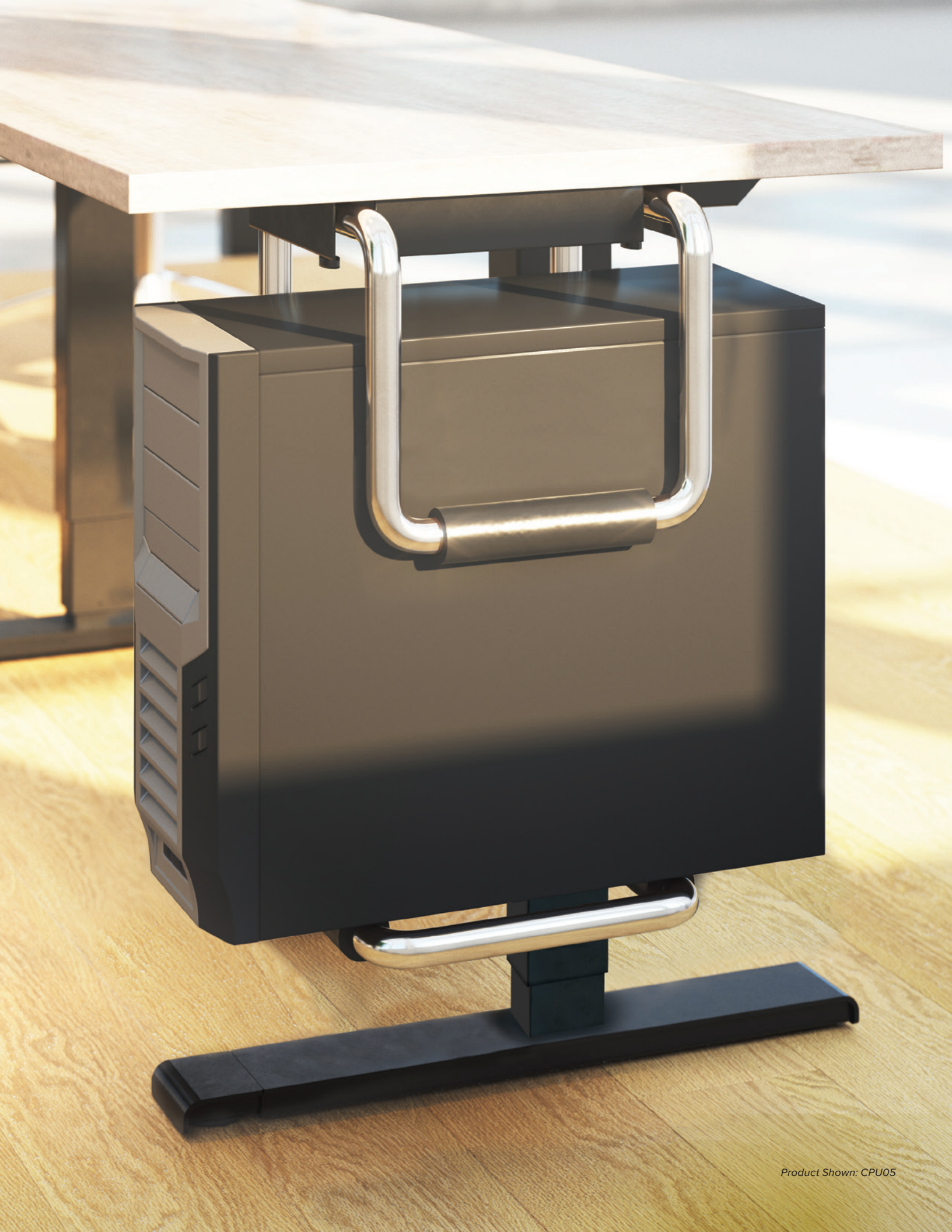
● Silver -SLV

● Black -BLK **LT**

○ White -WHT **LT**

Locking casters available

Table bases can be purchased independently or combined with a worksurface. Worksurfaces can only be purchased with a table base. Multiple worksurface shapes are available. Go to [esiergo.com](http://esiergo.com) for full list. Worksurfaces can come in a variety of laminates. Visit our website for additional specs, dimensional drawings, alternative images and more resources for all of ESI's products.



# Table base accessories

## CPU cart

Mobile CPU cart



**\$149**

MODEL # CPUCART-1-BLK

160 lbs. load capacity  
Fits CPUs ranging from 3.8"–9.0" wide  
CPU sits in adjustable tray  
Four swivel caster wheels (2 locking)  
Easy to assemble; no tools required to make adjustments



## CPU01

Simple CPU holder



**\$166**

MODEL # CPU01

125 lbs. load capacity  
360° swivel  
17.8" glide track  
60.0" adjustable straps  
12.5" min. CPU depth  
8.0" max CPU width  
24.0" max. CPU height  
Nylon security bands



## CPU mini

Small profile CPU holder



**\$185**

MODEL # CPUMINI

55 lbs. load capacity  
360° swivel  
13.4" ball bearing glide track  
2.7"–6.6" adjustable width  
16.0"–22.0" adjustable height  
Fits CPUs up to 20.0" in height



## CPU05

Heavy duty CPU holder



**\$216**

MODEL # CPU05

100 lbs. load capacity  
360° swivel  
17.8" glide track  
2.5"–8.3" adjustable width  
13.0"–21.0" adjustable height



## Conceal

Cable management spine



**\$63**

MODEL # CONCEAL-GRY

MODEL # CONCEAL-BLK

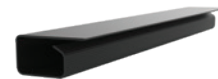
MODEL # CONCEAL-WHT

53.5" total height  
23 links  
Links are detachable  
Weighted bottom  
Attaches to bottom of worksurface



## Trough

Cable management undermount tray



**\$27**

MODEL # TROUGH-BLK

Mounts to most flat surfaces  
18.0" troughs - set of two (2)  
Mounts using heavy duty double sided tape or two screws provided



Visit our website for additional specs, dimensional drawings, alternative images and more resources for all of ESI's products.



# Power solutions

Position the power where you need it. Worksurfaces get a charge with the FlexCharge series, while workstations can be wired with the Railway series. Flexible mounting options make these adaptable for any workspace including individual workstations, conference rooms, collaborative spaces, and benching environments.



Product shown: (Left) FlexCharge9; (Right) FlexCharge4



## FlexCharge4

Personal desktop power

**\$203**

MODEL # FCH4-DSK-\_\_\_



### Available finishes

☐ White -WHT

☒ Black -BLK

### Quick reach

Puts power within reach for any individual desk or benching environment

### Charging

Includes quick-charge USB ports for powering up phones, tablets or other devices, as well as two AC outlets

Can be mounted in a 2.0" grommet or with included clamp  
8.0' power cord

Built-in surge protection



## FlexCharge9

Tabletop power pod

**\$254**

MODEL # FCH9-POD-\_\_\_



### Available finishes

☐ White -WHT

☒ Black -BLK

☐ Pink -PNK

### Quick reach

Puts power within reach for any collaborative area or conference room

### Charging

Ideal for multiple users to charge up to nine devices at once with quick-charge USB ports and AC outlets

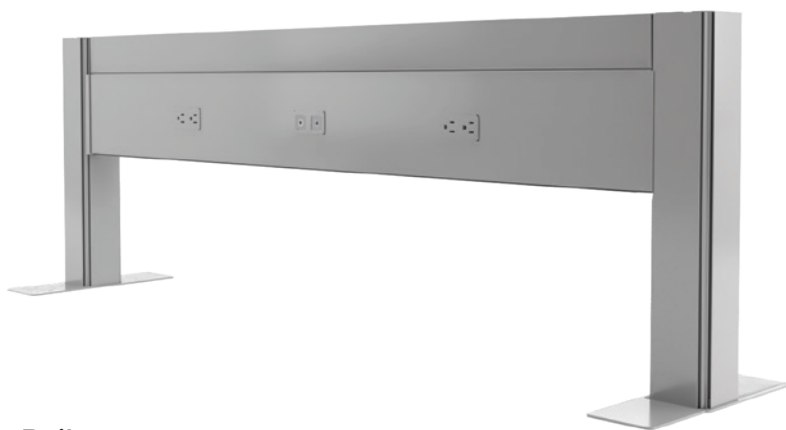
8.0' power cord

Built-in surge protection





Product shown: Triumph-LX, Eppa2, Pixie LEDX, Solution 1CC, CPU01, Railway, FlexCharge4, Centro



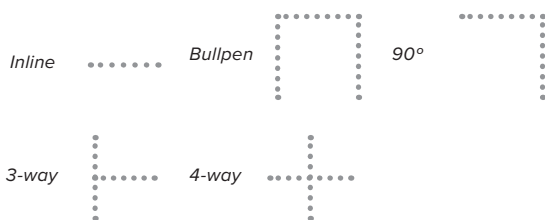
## Railway

Power and data solution



Please contact the Customer Service Department or to [esiergo.com](http://esiergo.com) for model #'s and pricing

### Available configurations



Visit our website for additional specs, dimensional drawings, alternative images and more resources for all of ESI's products.

### Open office solution

Optimizes open space with data and power rails with single and double sided options in four available widths

### Visually clean

Keeps all of the electrical and data wiring hidden inside the rail's simple design

(4) Four available widths: 36", 48", 60", 72"

18.0" h post

Double and single side systems

### Available finishes

● Silver -SLV  
48"/60" ships in 48 hrs.  
36"/72" LT

● Black -BLK **LT**

○ White -WHT **LT**

# Keyboard solutions

Increase your productivity with keyboard solutions. Each is easily modified to fit your preferences, and features built-in elements like tilt adjustment, palm rest, and glide track. From emails to spreadsheets, we'll make every keystroke comfortable.



*Product shown: All-Flex 3-leg, Evolve2-M, Solution Ultra, FlexCharge4, Conceal*



## Solution 1

### Solution 1CC

Keyboard platform combo

**\$310**

MODEL # SOLUTION1

MODEL # SOLUTION1CC



Recommended for straight edge worksurfaces (Solution 1) or diagonal corner worksurfaces (Solution 1CC)

25.0" keyboard platform, rectangle or cut corner

Spring assisted adjustment

17.0" glide track

Positions flush with worksurface

Available in R-Series\* (*cut corner only*)



## Solution 2

### Solution 2CC

Keyboard platform combo

**\$400**

MODEL # SOLUTION2

MODEL # SOLUTION2CC



Recommended for straight edge worksurfaces (Solution 2) or diagonal corner worksurfaces (Solution 2CC)

25.0" keyboard platform, rectangle or cut corner

Lift-and-lock adjustment

21.0" glide track

Positions flush with worksurface

Available in R-Series\* (*cut corner only*)



## Solution Ultra

Keyboard platform combo

**\$452**

MODEL # SOLUTIONULTRA



Recommended for radius corner worksurfaces

18.8" keyboard platform with 9.3" switch-n-click mousing platform

Lift-and-lock adjustment

21.0" glide track

Positions flush with worksurface



## Solution 6

### Solution 6CC

Keyboard platform combo

**\$423**

MODEL # SOLUTION6

MODEL # SOLUTION6CC



Recommended for straight edge worksurfaces (Solution 6) or diagonal corner worksurfaces (Solution 6CC)

27.0" keyboard platform, rectangle or cut corner

Lift-and-lock and dial-a-tilt adjustment

21.8" glide track

Positions flush with worksurface

\*R-Series platforms are composed of 100% post-consumer materials, making them completely recyclable. They are free of formaldehydes and carcinogens and emit no VOC's (Volatile Organic Compounds).

Visit our website for additional specs, dimensional drawings, alternative images and more resources for all of ESI's products.



# Lighting

Shine your light exactly where you want it with desktop task lighting and under cabinet lighting. Lights feature dimming options, occupancy sensors, and other energy and convenience features. Plus, workspace lighting provides flexible tilt and rotation so you can brighten your workspace and bring on the workday.



Product shown: Lustre, FlexCharge4





### Pixie-LED

Small profile task light

**\$168**

MODEL # PIXIE-LED-\_\_ \_\_



LED  
3000 K color temperature  
50,000 hrs. lamp life  
7.0' power cord  
11.8" reach



### Vivid-X

Single arm LED task light

**\$377**

MODEL # VIVID-X-SLV



LED  
4100 K color temperature  
50,000 hrs. lamp life  
8 hr. auto shut-off  
Built-in dimmer  
6.0' power cord  
21.0" reach



### Vivid-LEX

Two arm LED task light

**\$392**

MODEL # VIVID-LEX-SLV



LED  
4100 K color temperature  
50,000 hrs. lamp life  
8 hr. auto shut-off  
Built-in dimmer  
6.0' power cord  
36.0" reach



### Lustre

Telescoping LED task light

**\$580**

MODEL # LUSTRE-\_\_ \_\_



#### Available finishes



Silver -SLV



White -WHT

LED  
3500 K color temperature  
50,000 hrs. lamp life  
Occupancy sensor  
8 hr. auto shut-off  
Built-in dimmer  
12.0' power cord  
USB charging port  
Telescoping reach

# esi

## Healthcare Solutions

**ESI Office  
and Showroom**

4030 East Quenton Drive  
Mesa, Arizona 85215

**Fellowes Brands®  
Headquarters**

1789 Norwood Avenue  
Itasca, Illinois 60143

**ESI Chicago  
Showroom**

theMart - Showroom 11-100  
222 West Merchandise Mart Plaza  
Chicago, Illinois 60654

