



# Evolve28-FM

Evolve1-FM + extended pole

# Evolve28-FM

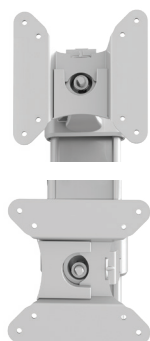
Evolve1-FM + extended pole



standard 18.0" pole shown on right



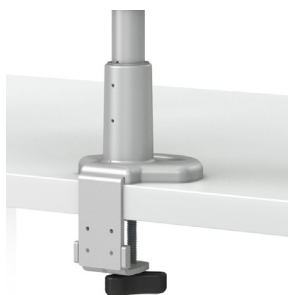
VESA quick release



landscape/portrait rotation



grommet mount



desk clamp

## Product specs

- Finger touch dynamic height adjustment
- Recommended for worksurfaces 24.0"–36.0" deep or corner applications
- 26.8" arm extension
- 4.0" arm retraction
- +90°/-25° monitor tilt
- ±90° VESA rotation
- 6.5 lbs.–17.6 lbs. weight capacity
- 30.0" pole height
- VESA quick release
- 180° lock-out feature
- Desk clamp and grommet mount included
- Exceeds BIFMA x5.5 requirements
- Benching system mount(s) available. Call Customer Service for details.
- Warranty: 15 yr.



| Model #  | List price |
|--|------------|
| <input type="radio"/> EVOLVE28-FM-SLV            | \$476      |
| <input checked="" type="radio"/> EVOLVE28-FM-BLK | \$476      |
| <input type="radio"/> EVOLVE28-FM-WHT            | \$476      |

## Evolve monitor arm key

F - Fixed monitor arm

M - Motion monitor arm

S - Slider mount

## Evolve for every need

- As workstation needs change, so can the Evolve configurations. Additional components sold separately
- Benching system mount(s) available

Call our Customer Service Department for compatibility and pricing for custom configurations.

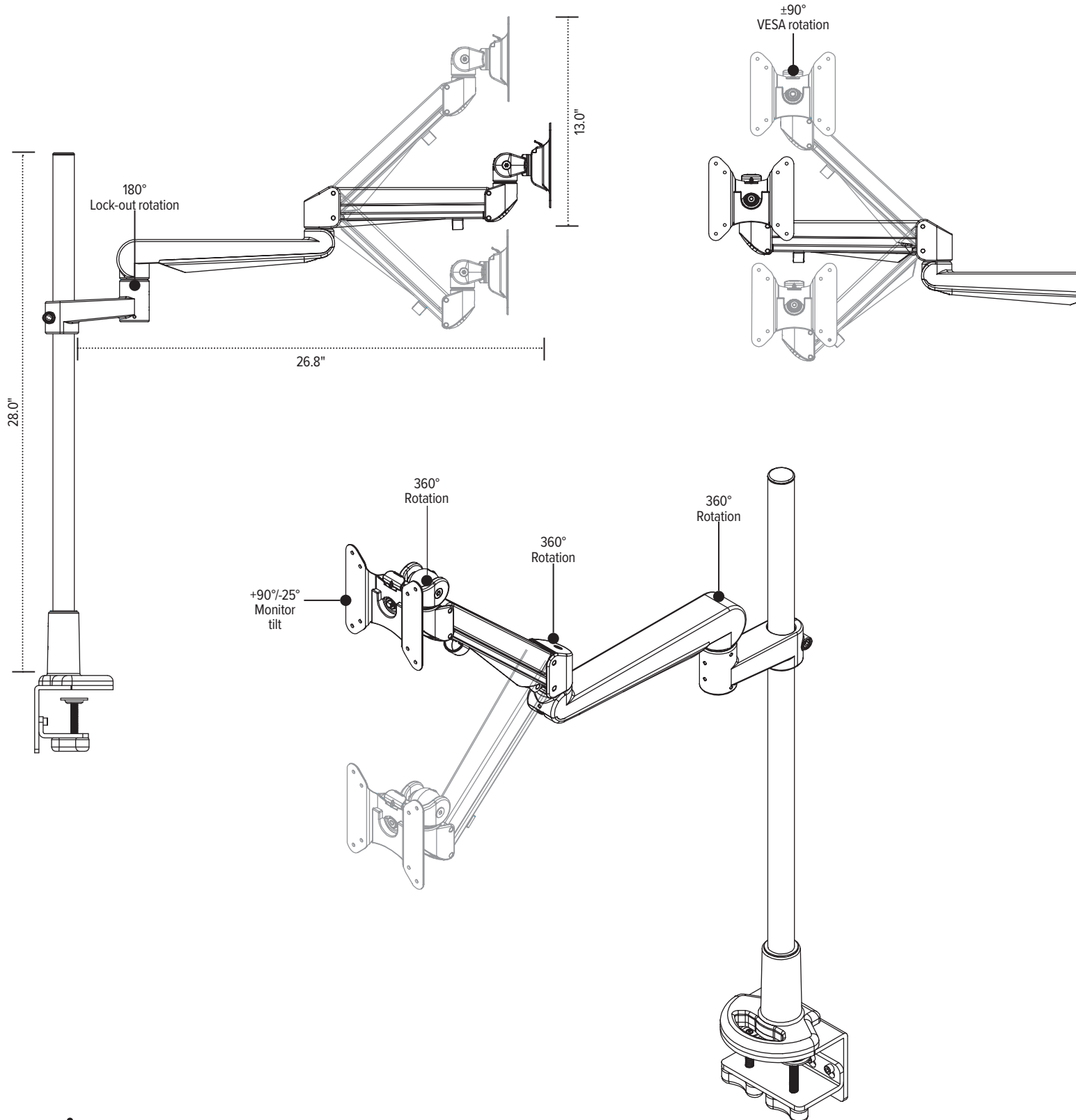
esi

800.833.3746  
esiergo.com



# Evolve28-FM

Evolve1-FM + extended pole



esi

800.833.3746  
esiergo.com