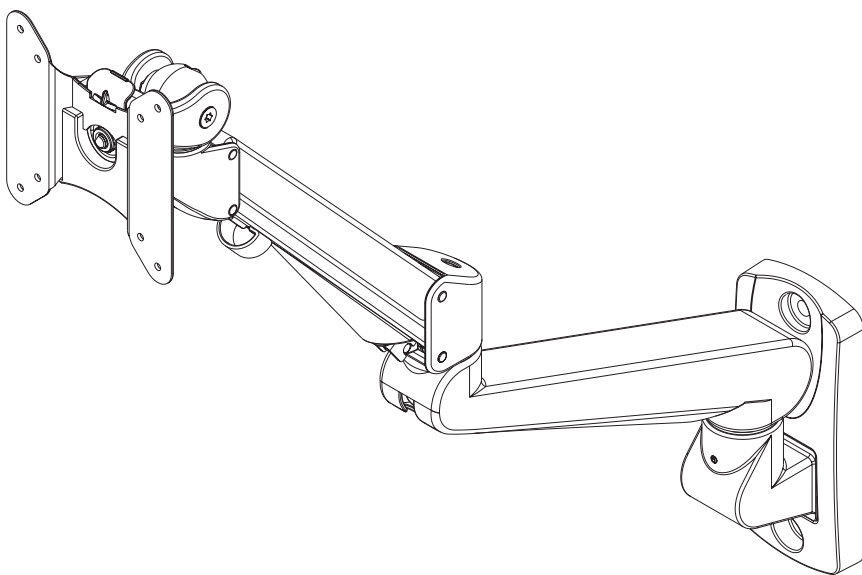


EDGE-WALL

MONITOR ARM

Model EDGE-WALL-SLV

EDGE-WALL Rev A 2/17

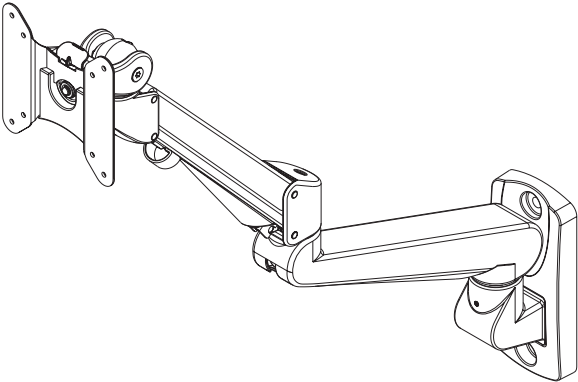
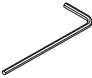
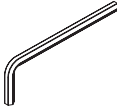


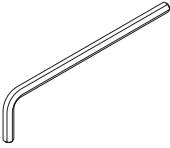


ASSEMBLY AND ADJUSTMENT

EDGE-WALL MONITOR ARM

PLEASE REVIEW these instructions before beginning the installation. Check that all parts and tools shown below were provided with your order. Contact your supplier if any parts are missing. Do not discard the packaging until satisfied that the product operates to your satisfaction.

PARTS AND TOOLS PROVIDED

<div>Monitor Arm Assembly (1)</div> 		<div>2mm Allen Key (1)</div> 
		<div>4mm Allen Key (1)</div> 
<div>VESA Plate Screw (4)</div>  <div>M4x10</div>	<div>VESA Locking Screw (1)</div>  <div>M4x10</div>	<div>5mm Allen Key (1)</div> 

CAUTION: Hand-tighten screws only. Do **not** use power tools.

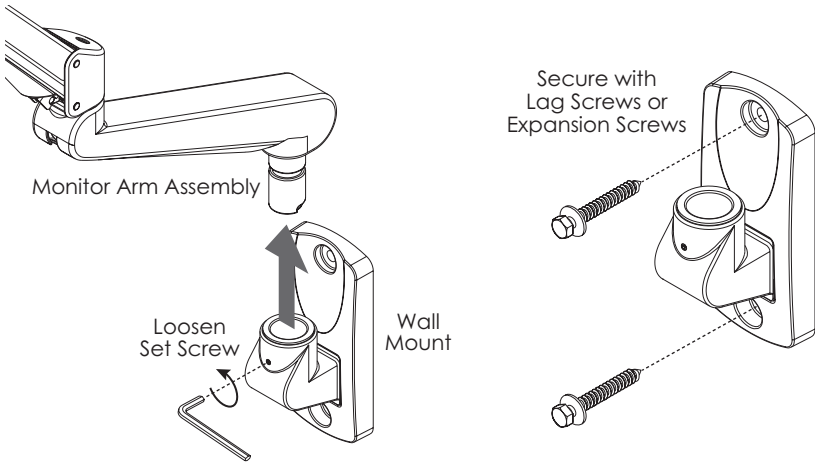
ADDITIONAL PARTS AND TOOLS REQUIRED

- Two lag screws, if mounting to wood; or two expansion screws, if mounting to a cement wall
- Phillips screwdriver

Secure the Wall Mount to the Wall

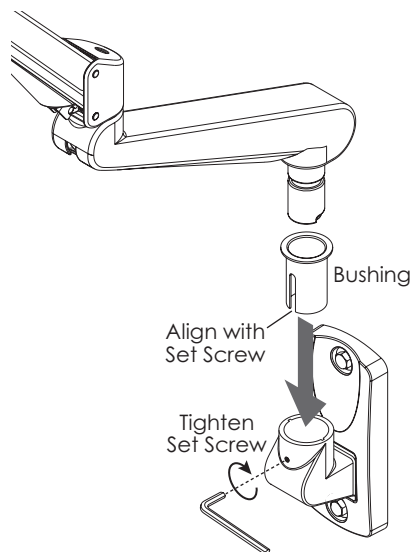
- Loosen the set screw on the wall mount using the 2mm Allen key. Then remove the monitor arm assembly from the mount.
- Use the wall mount as a template to mark where to drill pilot holes for the lag bolts or expansion bolts. Then securely attach the wall mount to the wall.
 - Use lag screws if mounting into wood.
 - Use expansion screws if mounting into cement.

CAUTION: Do not mount into drywall.



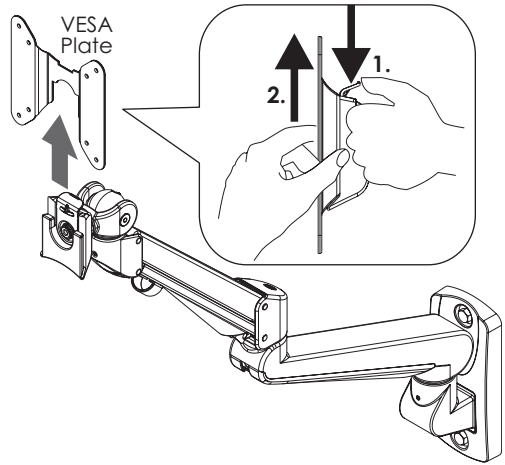
Re-Install the Monitor Arm Assembly to the Wall Mount

- Insert the post on the lower monitor arm (the fixed arm) into the wall mount.
 - If the bushing came out of the wall mount when you removed the monitor arm, be sure the cut-out portion of the bushing aligns with the set screw location on the mount.
- Tighten the set screw with the 2mm Allen key. Then back it out just enough to allow the monitor arm to swivel.

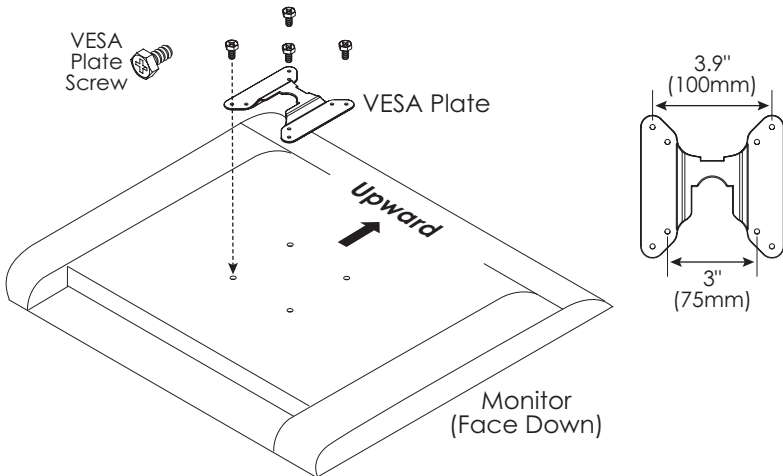


Attach VESA Plate to Monitor

- Remove the VESA plate from the VESA mount by pressing down on the plastic tab to release the lock. Pull the plate upward to remove.

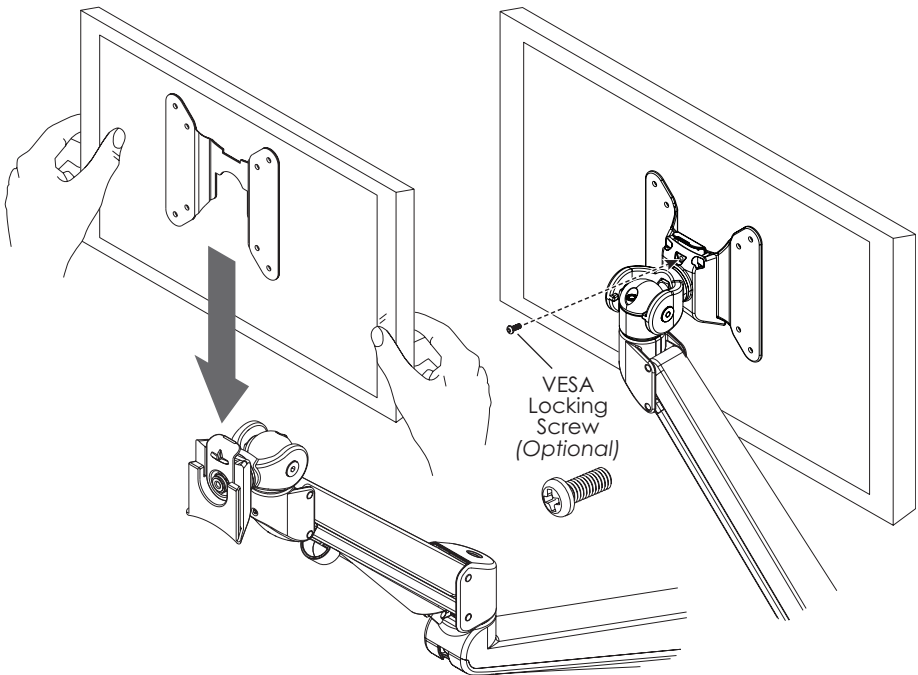


- Place the monitor face down on a flat surface. Align the VESA plate holes with the holes on the back of the monitor. Attach the VESA plate using the four VESA plate screws provided.
- There are two sets of four holes on the VESA plate. One set has holes 3.9" (100mm) apart, the other set has holes 3" (75mm) apart. Use the set that matches the holes on the monitor.



Attach Monitor and VESA plate

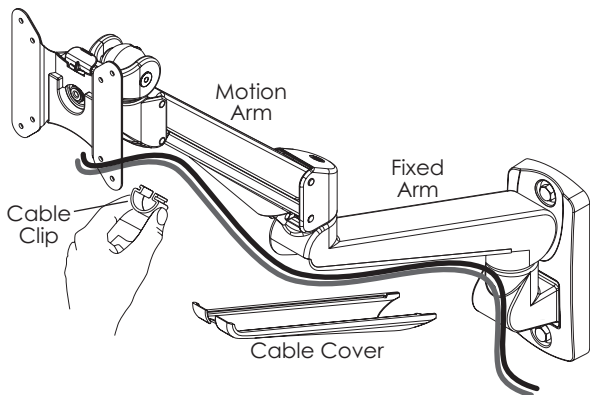
- Slide the VESA plate (with monitor attached) back onto the VESA mount. Make sure the VESA plate clicks securely in place.
- **Optional:** Install a VESA locking screw behind the VESA plate to prevent the tab on the VESA mount from releasing the monitors.



Cable Management

Use the cable clip and cable cover to help manage the monitor cables.

- Pinch the cable clip to remove it from the motion arm, and again when re-installing it with the cables captured.
- Slide the cable cover out from the fixed arm. Slide it back in with the cables captured.



Tension Adjustments

There are five possible swivel and tilt tension adjustments:

1. Monitor swivel adjustment

- Use the 2mm Allen key to adjust the set screw for the desired ease of monitor rotation.

2. Motion arm swivel adjustment

- Use the 2mm Allen key to adjust the set screw for the desired ease of monitor arm rotation.

3. Fixed arm swivel adjustment

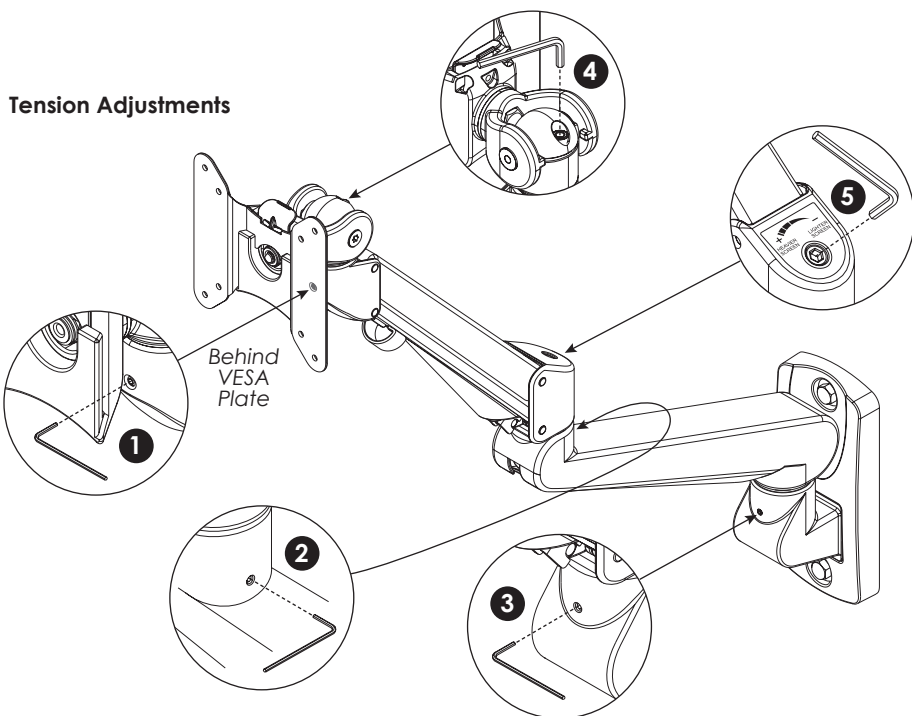
- Use the 2mm Allen key to adjust the set screw for the desired ease of fixed arm rotation.

4. Monitor tilt adjustment

- Use the 4mm Allen key to adjust the set screw for the appropriate monitor weight.

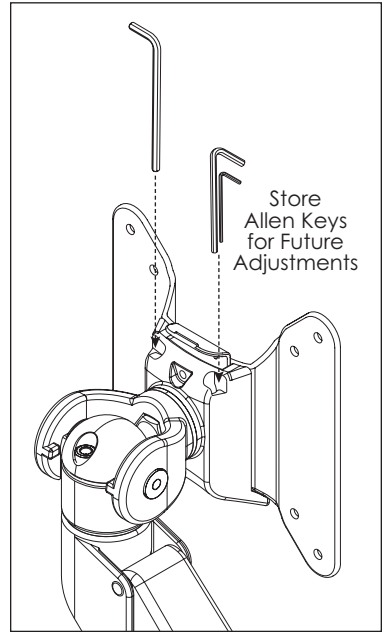
5. Monitor arm weight adjustment

- Use the 5mm Allen key to adjust the set screw for the appropriate monitor weight.
- Weight capacity per arm is 6.5 lbs to 17.6 lbs (2.95 kg to 8 kg).



Allen Key Storage

- Insert the Allen keys into the holes behind the VESA plate to store for future adjustment.
- Insert the two smaller Allen keys into the same hole.





800.833.3746 | esiergo.com