



Kata™ EX6-FMS

Six fixed + motion + slider monitor arm

Kata™ EX6-FMS

Six fixed + motion + slider monitor arm



tension adjustment



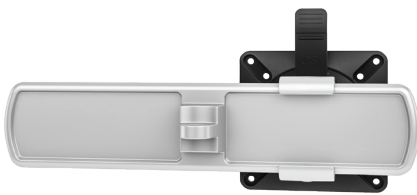
integrated tool storage



grommet mount



desk clamp



slider mount



connection sleeve

Product specs

- Finger touch dynamic height adjustment
- Recommended for worksurfaces 36.0" deep or less
- 33.4" outside arm extension
- 11.1" center arm extension
- 6.6" arm retraction
- +90°/-45° monitor tilt (*slider & standard mount*)
- ±90° VESA rotation
- 28.0" pole height (*includes base*)
- Up to 20.0 lb. weight capacity (*per middle arm*)
- 2.5 lb.–18.5 lb. weight capacity (*per outside arm*)
- VESA 75mm/100mm quick release
- 180° lock-out feature
- Desk clamp mount only
- Slider provide 9.5" of additional horizontal adjustability
- Tension adjustment indicator for precision installation
- Each connection sleeve can accommodate up to three monitors depending on the configuration
- Partially assembled for quick installation
- Integrated cord management
- Integrated tool holder
- Meets or exceeds ANSI/BIFMA x5.5 guidelines
- 28.5" max. monitor width
Bezel measured left to right.
Max. width is contingent on weight capacity.
Note: monitor height/weight might limit size
- Warranty: 15 yr.
- Designed for ESI by Roger Webb Associates of London, England

Model

- ☐ KATAEX6-DC-FMS-SLV
- ☒ KATAEX6-DC-FMS-BLK
- ☐ KATAEX6-DC-FMS-WHT

KataEX monitor arm key

F - Fixed monitor arm

M - Motion monitor arm

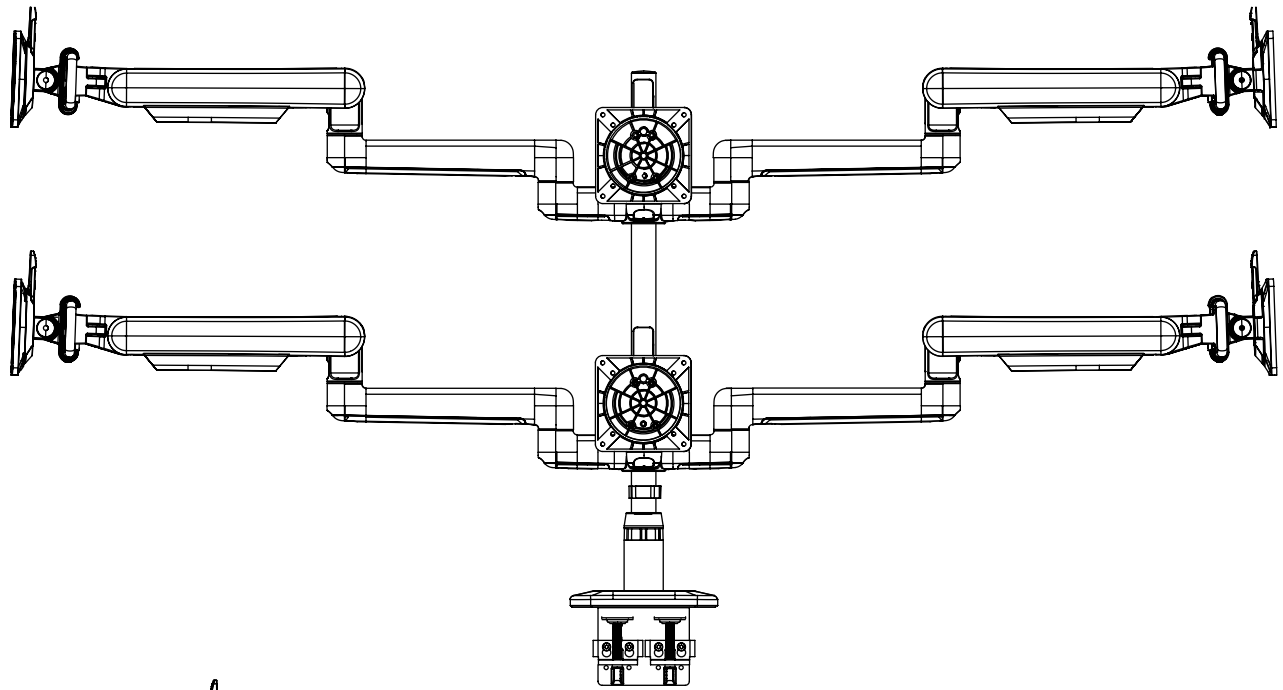
S - Slider mount

esi

800.833.3746
esiergo.com

Kata™ EX6-FMS

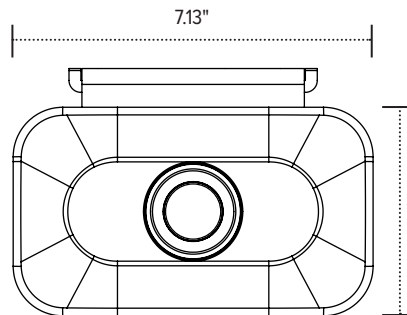
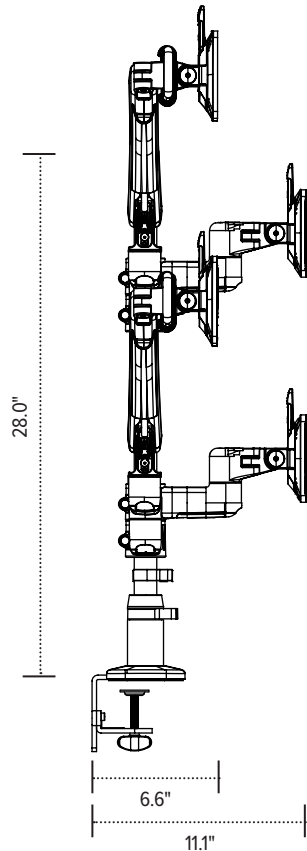
Six fixed + motion + slider monitor arm



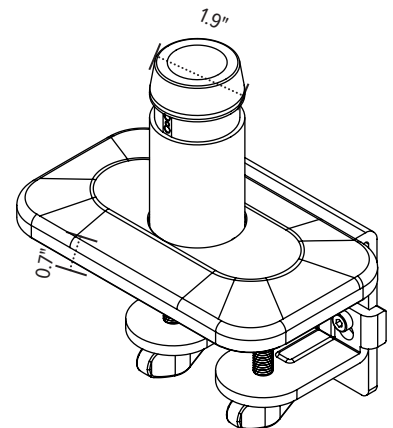
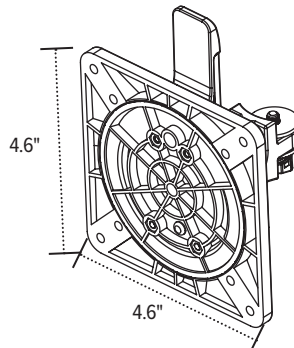
Base

33.4"

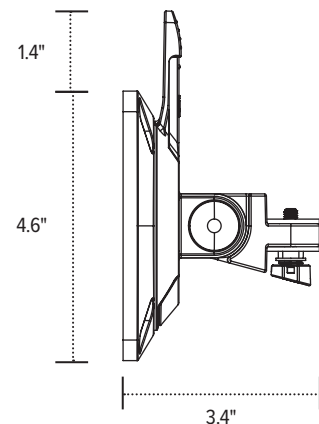
Base



VESA plate



VESA mount
(profile view)



esi

800.833.3746
esiergo.com