

Conceal

cable management



Product Specs

- Expands and retracts to keep cables organized under a height adjustable table base
- Total height: 53.5"
- Total # of links: 23
- Links are detachable
- Weighted bottom
- Attaches to bottom of worksurface
- Warranty: 15 yrs.
- Available on GSA contract

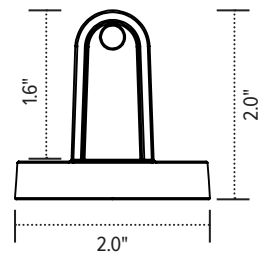
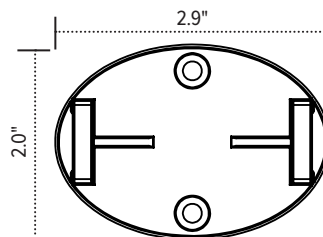
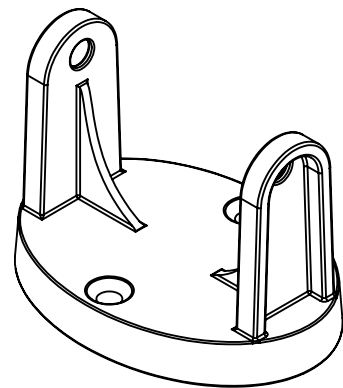
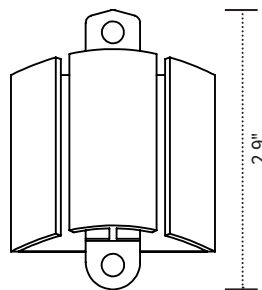
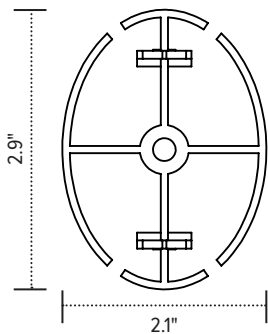
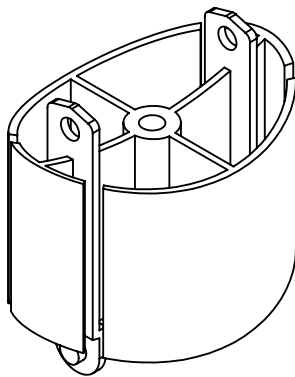
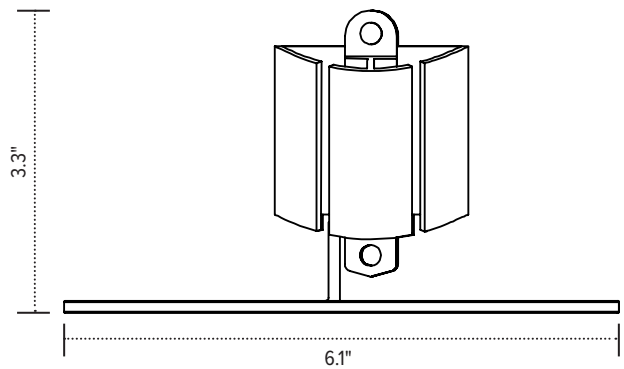
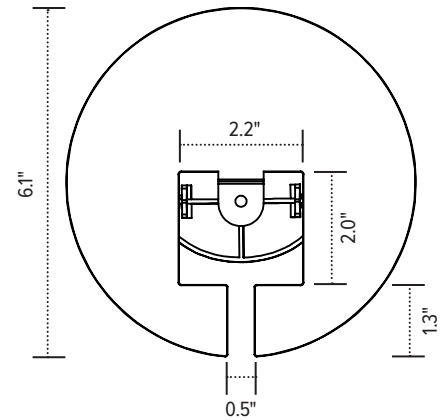
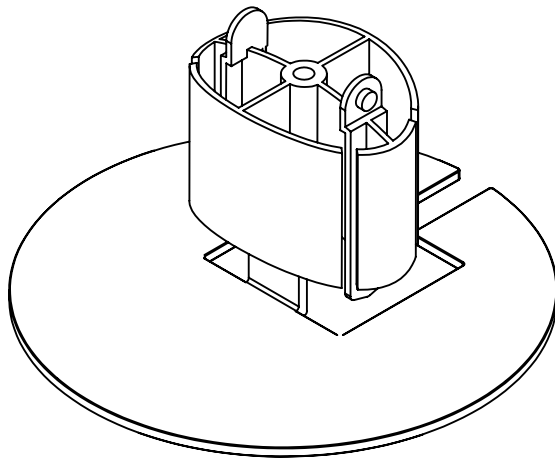
Model

- CONCEAL-GRY
- CONCEAL-BLK
- ⓁⓉ CONCEAL-WHT

LT=CALL FOR ON HAND AVAILABILITY

Conceal

cable management



esi

800.833. 3746
esiergo.com