



## All-Flex<sup>®</sup> 2-leg

Electric table base

# All-Flex 2-leg

## Electric table base

top support at 19.3"



top support at 23.3"



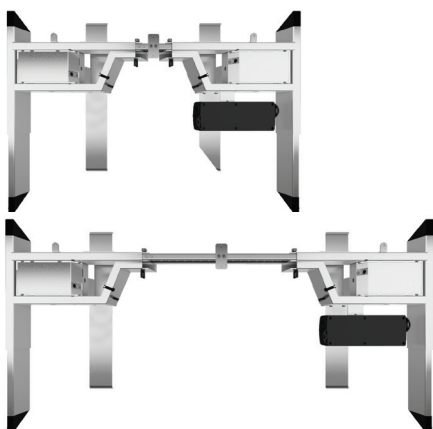
foot at 28.0"



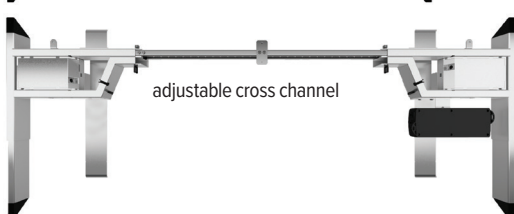
foot at 22.0"



top views of  
notched cross channel



adjustable cross channel



# esi

800.833.3746  
esiergo.com

### Product Specs

- Electric height adjustment
- 265lbs. base lifting capacity
- 1.5"/sec adjustment speed
- One part number for all 2-leg sizes
- 26.0" height adjustment range
  - 23.2"–49.2" (low/high)  
(excluding worksurface)
- Three-stage adjustable legs
- Provides adjustable cross channels, top support, and feet making it one of the most adjustable table bases on the market
- Foot is adjustable to 22.0" or 28.0" (patented design)
- Adjustable width frame to fit worksurfaces 36.0"–84.0" wide
- Adjustable depth top support expands to accommodate worksurfaces 24.0"–36.0" deep
- Notched cross channel offers ample space for keyboard tray glide tracks
- 86.0" power cord
- Digital keypad with four memory settings
- Anti-collision safety feature
- Quickstart
- Crossbar includes guide markings to assist in setting width
- Folding frame design for quick assembly
- Integrated control unit shelf
- Integrated storage for foot extension plate when not in use
- Integrated cable management
- Quiet adjustment
- Steel construction
- Low standby power consumption
- Table base is UL962 listed
- Lead-free
- Two motors
- ADA compliant
- Locking casters are available
- Warranty: 15yrs. structural / 7yrs. mechanical

### Available base finishes

- Silver -SLV
- LT Black -BLK
- LT White -WHT

LT=CALL FOR ON HAND AVAILABILITY



digital keypad



locking casters

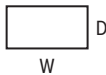
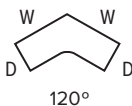
### Caster Kit

- Set of casters for table bases
- Increases height by 2.0"
- Locking casters for security

MODEL # CASTERKIT-FLEX2

# All-Flex 2-leg

Electric table base

Table bases		Available worksurfaces			
Table base model	Worksurface shape	Worksurface dimension	TFL Quick ship	TFL Standard	HPL Standard
FLEX2-___	 Rectangle	36"w x 24"d	—	●	●
		42"w x 24"d	—	●	●
		48"w x 24"d	●	●	●
		60"w x 24"d	—	●	●
		72"w x 24"d	—	●	●
		84"w x 24"d	—	●	●
		36"w x 30"d	—	●	●
		42"w x 30"d	—	●	●
		48"w x 30"d	—	●	●
		60"w x 30"d	●	●	●
		72"w x 30"d	—	●	●
Table base model	Worksurface shape	Worksurface dimension	TFL Quick ship	TFL Standard	HPL Standard
FLEX2-___	 120°	48"w x 24"d	—	●	●
		60"w x 24"d	—	—	●
		72"w x 24"d	—	—	●
		48"w x 30"d	—	—	●
		60"w x 30"d	—	—	●
		72"w x 30"d	—	—	●

## Worksurface Program

Multiple worksurface shapes and laminates are available. See the Complete Table & Worksurface Ordering Guide for worksurface details including pricing and laminate colors. TFL Quick ship worksurfaces are shipped out in 48 hours, TFL and HPL Standard worksurfaces ship in 2–3 weeks.

*Table bases and worksurfaces can be purchased independently or as a combination.*

*ESI table bases and worksurfaces are made to exact dimensions. If nominal sizing is needed, please specify when ordering.*

esi

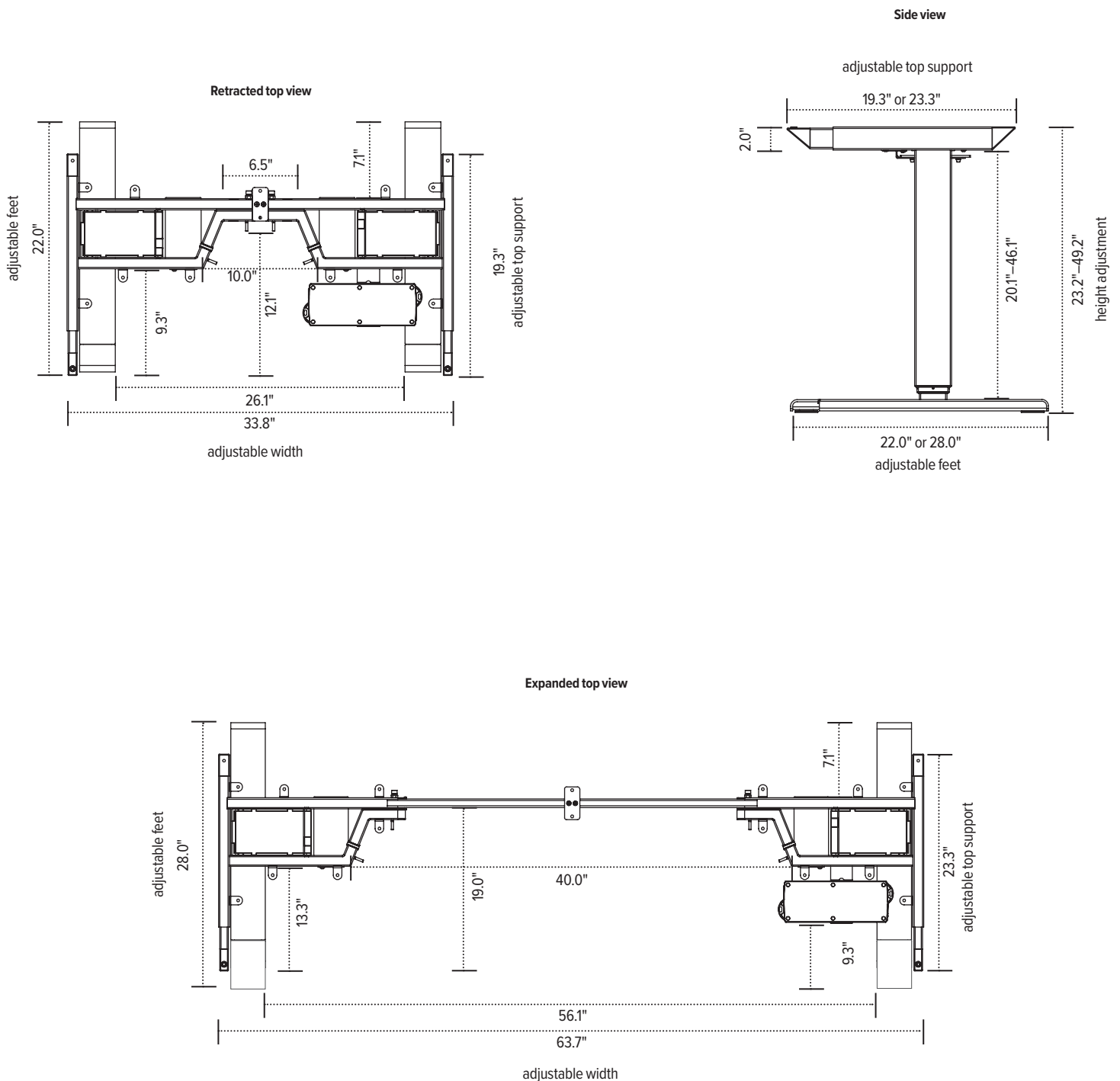
800.833.3746

esiorgo.com

© 2019 Fellowes, Inc. V32 catalog pricing.

# All-Flex 2-leg

Electric table base



The base dimensions as shown are actual.

esi

800.833.3746  
esiergo.com