

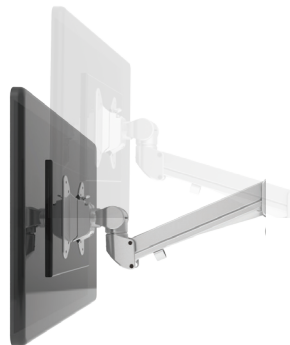
# Evolve2-FMS

Dual fixed + motion + slider monitor arm

V35 - Pricing effective 6/1/2021

# Evolve2-FMS

Dual fixed + motion + slider monitor arm



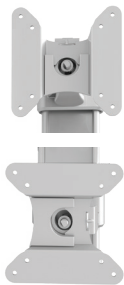
effortless  
adjustment



slider



cable management



landscape/portrait  
rotation



grommet mount



desk clamp



integrated allen key  
storage



VESA quick release

## Product specs

- Finger touch dynamic height adjustment
- Recommended for worksurfaces 36.0" deep or less
- 31.4" arm extension
- 6.7" arm retraction
- +80°/-60° monitor tilt
- ±90° VESA rotation
- 4.4 lb.–15.4 lb. weight capacity (*per arm*)
- 18.0" pole height (*includes base*)
- VESA 75mm/100mm quick release
- 180° lock-out feature
- Desk clamp and grommet mount included
- 32.0" max. monitor width  
*Bezel measured left to right.*  
*Max. width is contingent on weight capacity.*
- Slider provides 8.5" of additional horizontal adjustability
- Patented slider design for exclusive ESI use
- Meets or exceeds BIFMA x5.5 and CSA CAN/CGSB44.227 guidelines
- Warranty 15 yr.



## Model #

## List price

<input type="radio"/> EVOLVE2-FMS-SLV	\$990
<input checked="" type="radio"/> EVOLVE2-FMS-BLK	\$990
<input type="radio"/> EVOLVE2-FMS-WHT	\$990

## Evolve monitor arm key

F - Fixed monitor arm

M - Motion monitor arm

S - Slider mount

## Evolve for every need

- As workstation needs change, so can the Evolve configurations. Additional components sold separately
- Benching system mount(s) available

*Call our Customer Service Department for compatibility and pricing for custom configurations.*

# Evolve2-FMS



Dual fixed + motion + slider monitor arm

