



esi®



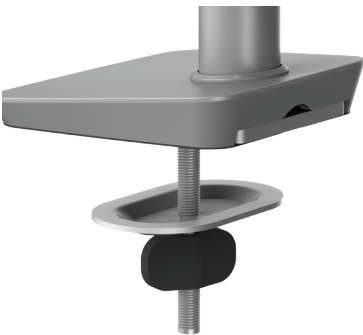
# Sena™ EX3-FF

Triple fixed + fixed monitor arm

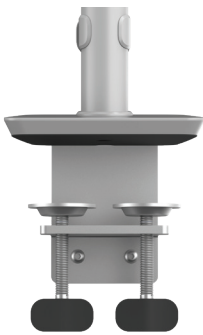
V36 - Pricing effective 1/1/2022

# Sena™EX3-FF

Triple fixed + fixed monitor arm



grommet mount



desk clamp

### Product specs

- Manual height adjustment
- Recommended for worksurfaces 30" deep or less
- 23.0" arm extension
- 4.6" center arm extension
- 2.9" arm retraction
- +75° / -35° monitor tilt
- +/-90° VESA rotation
- 2.2lb. - 19.8lb weight capacity (per arm)
- 16" pole height (includes base)
- VESA 75mm/100mm quick release
- 180° lock-out feature
- Desk clamp and grommet mount included
- Integrated cord management
- 270° / 135° arm rotation with 180° lock out
- 11.5" max monitor width
  - Bezel measured left to right
  - Max width is contingent on weight capacity
- Meets or exceeds ANSI/BIFMA x5.5 guidelines
- Warranty: 15 yr

Model #	List price
<input type="radio"/> SENAEX3-FF-SLV	\$680
<input checked="" type="radio"/> SENAEX3-FF-BLK	\$680
<input type="radio"/> SENAEX3-FF-WHT	\$680

SenaEX monitor arm key	Available mounting options
F - Fixed monitor arm	DC - Desk clamp
M - Motion monitor arm	GM - Grommet mount
S - Slider mount	

### SenaEX for every need

- As workstation needs change, so can the SenaEX configurations. Additional components sold separately
- Call our Customer Service Department for pricing for custom configurations.

# Sena™ EX3-FF

Triple fixed + fixed monitor arm

esi®

