

GOOD

Eppa™

- 10.5" height adjustment range
- 21.2" arm extension
- 4.0" arm retraction
- ±90° monitor tilt
- ±360° VESA rotation
- Monitor swivel stop ±90°
- 2.2 lbs.–17.6 lbs. weight capacity
- Finger touch dynamic height adjustment
- VESA quick mount

Eppa2

- 10.5" height adjustment range
- 21.2" arm extension
- 4.0" arm retraction
- ±90° monitor tilt
- ±360° VESA rotation
- Monitor swivel stop ±90°
- 2.2 lbs.–17.6 lbs. weight capacity (per arm)
- Finger touch dynamic height adjustment
- VESA quick mount
- 39.0" max. monitor width

BETTER

Edge2®

- 12.0" height adjustment range
- 22.0" arm extension
- 4.0" arm retraction
- ±90° monitor tilt
- ±90° VESA rotation
- 6.5 lbs.–17.6 lbs. weight capacity (per arm)
- Finger touch dynamic height adjustment
- 180° lock-out feature
- VESA quick release
- 32.0" max. monitor width

Edge2-MS

- 10.5" height adjustment range
- 16.0" arm extension
- 6.5" arm retraction
- +45°/-50° monitor tilt
- ±90° VESA rotation
- 4.4 lbs.–15.4 lbs. weight capacity (per arm)
- Finger touch dynamic height adjustment
- 180° lock-out feature
- VESA quick release
- 28.0" max. monitor width
- Sliders provide 9.0" of addtl horizontal adjustability

Model #

Eppa-SLV

List price

\$262

Model #

EPPA2-SLV

List price

\$512

Model #

Edge2-___

List price

\$671

Model #

Edge2-MS-___

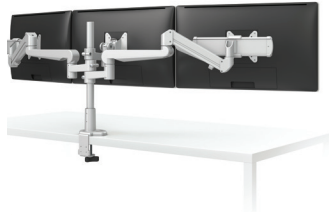
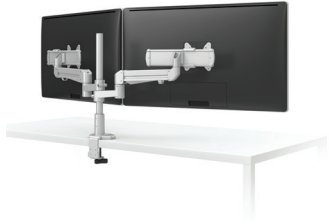
List price

\$671



good | better | best

Monitor arms



BEST

Evolve2-MS

- 16.3" arm extension
- 6.5" arm retraction
- +80°/-60° monitor tilt
- ±90° VESA rotation
- 4.4lbs.–15.4lbs. weight capacity (per arm)
- 180° lock-out feature
- VESA quick release
- 18.0" pole height
- 28.0" max. monitor width
- Sliders provide 9.0" of addt'l horizontal adjustability

Evolve3-FMS

- 26.8" outside arm extension
- 6.0" center arm extension
- 4.0" arm retraction
- +90°/-25° monitor tilt
- ±90° VESA rotation
- 0.0 lbs.–20.0 lbs. weight capacity (middle arm)
- 4.4 lbs.–15.4 lbs. weight capacity (per outside arms)
- 180° lock-out feature
- VESA quick release
- 18.0" pole height
- 24.5" max. monitor width
- Sliders provide 9.0" of addt'l horizontal adjustability

BEST

Kata

- 14.0" height adjustment range
- 21.0" arm extension
- 5.5" arm retraction
- +90°/-25° monitor tilt
- ±90° VESA rotation
- 4lbs.–20lbs. weight capacity (per arm)
- 180° lock-out feature
- VESA quick release
- Tension adjustment indicator

Kata2

- 14.0" height adjustment range
- 21.0" arm extension
- 5.5" arm retraction
- +90°/-25° monitor tilt
- ±90° VESA rotation
- 4lbs.–20lbs. weight capacity (per arm)
- 180° lock-out feature
- VESA quick release
- 32.0" max. monitor width
- Tension adjustment indicator

Model # Evolve2-MS-___ **List price \$780**

Model # Evolve3-FMS-___ **List price \$1,022**

Model # KATA-DC-___ **List price \$381**
 KATA-GM-___ **List price \$381**

Model # KATA2-DC-___ **List price \$716**
 KATA2-GM-___ **List price \$716**