

Evolve2-F

Dual fixed monitor arm

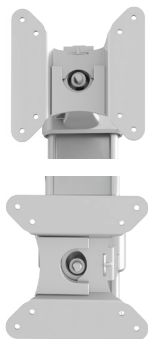
V35 - Pricing effective 6/1/2021

Evolve2-F

Single fixed monitor arm



cable management



landscape/portrait rotation



grommet mount



desk clamp



VESA quick release



integrated allen key storage

Product specs

- Manual height adjustment
- Recommended for worksurfaces 30.0" deep or less
- 18.2" arm extension
- 4.1" arm retraction
- +90°/-25° tilt
- ±90° rotation
- Up to 20.0 lb. weight capacity (*per arm*)
- 18.0" pole height (*includes base*)
- VESA 75mm/100mm quick release
- 180° lock-out feature
- Desk clamp and grommet mount included
- 28.0" max. monitor width
Bezel measured left to right.
Max. width is contingent on weight capacity.
- Meets or exceeds BIFMA x5.5 and CSA CAN/CGSB44.227 guidelines
- Warranty 15 yr.



Model #	List price
<input type="radio"/> EVOLVE2-F-SLV	\$552
<input checked="" type="radio"/> EVOLVE2-F-BLK	\$552
<input type="radio"/> EVOLVE2-F-WHT	\$552

Evolve monitor arm key

- F - Fixed monitor arm
M - Motion monitor arm
S - Slider mount

Evolve for every need

- As workstation needs change, so can the Evolve configurations. Additional components sold separately
- Benching system mount(s) available

Call our Customer Service Department for compatibility and pricing for custom configurations.

Evolve2-F

Single fixed monitor arm

