



esi®

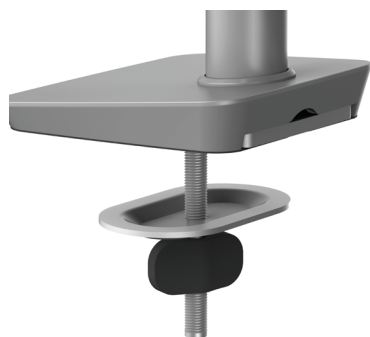


# Sena™ EX3-FF

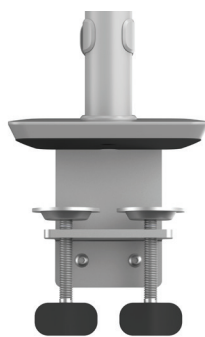
Triple fixed + fixed monitor arm

# Sena™ EX3-FF

Triple fixed + fixed monitor arm



grommet mount



desk clamp

## Product specs

- Manual height adjustment
- Recommended for worksurfaces 30" deep or less
- 22.97" arm extension
- 4.65" center arm extension
- 2.89" arm retraction
- +75° / -35° monitor tilt
- +/-90° VESA rotation
- 2.2lb. - 19.8lb weight capacity (per arm)
- 16" pole height (includes base)
- VESA 75mm/100mm quick release
- 180° lock-out feature
- Desk clamp and grommet mount included
- Integrated cord management
- 270° / 135° arm rotation with 180° lock out
- 23.03" max monitor width
  - Bezel measured left to right
  - Max width is contingent on weight capacity
- Meets or exceeds ANSI/BIFMA x5.5 guidelines
- Warranty: 15 yr

## Model #

- ☐ SENAEX3-FF-SLV
- ☒ SENAEX3-FF-BLK
- ☐ SENAEX3-FF-WHT

## SenaEX monitor arm key

F - Fixed monitor arm  
M - Motion monitor arm  
S - Slider mount

## Available mounting options

DC - Desk clamp  
GM - Grommet mount

## SenaEX for every need

- As workstation needs change, so can the SenaEX configurations. Additional components sold separately

*Call our Customer Service Department for pricing for custom configurations.*

# Sena™ EX3-FF

Triple fixed + fixed monitor arm

esi®

