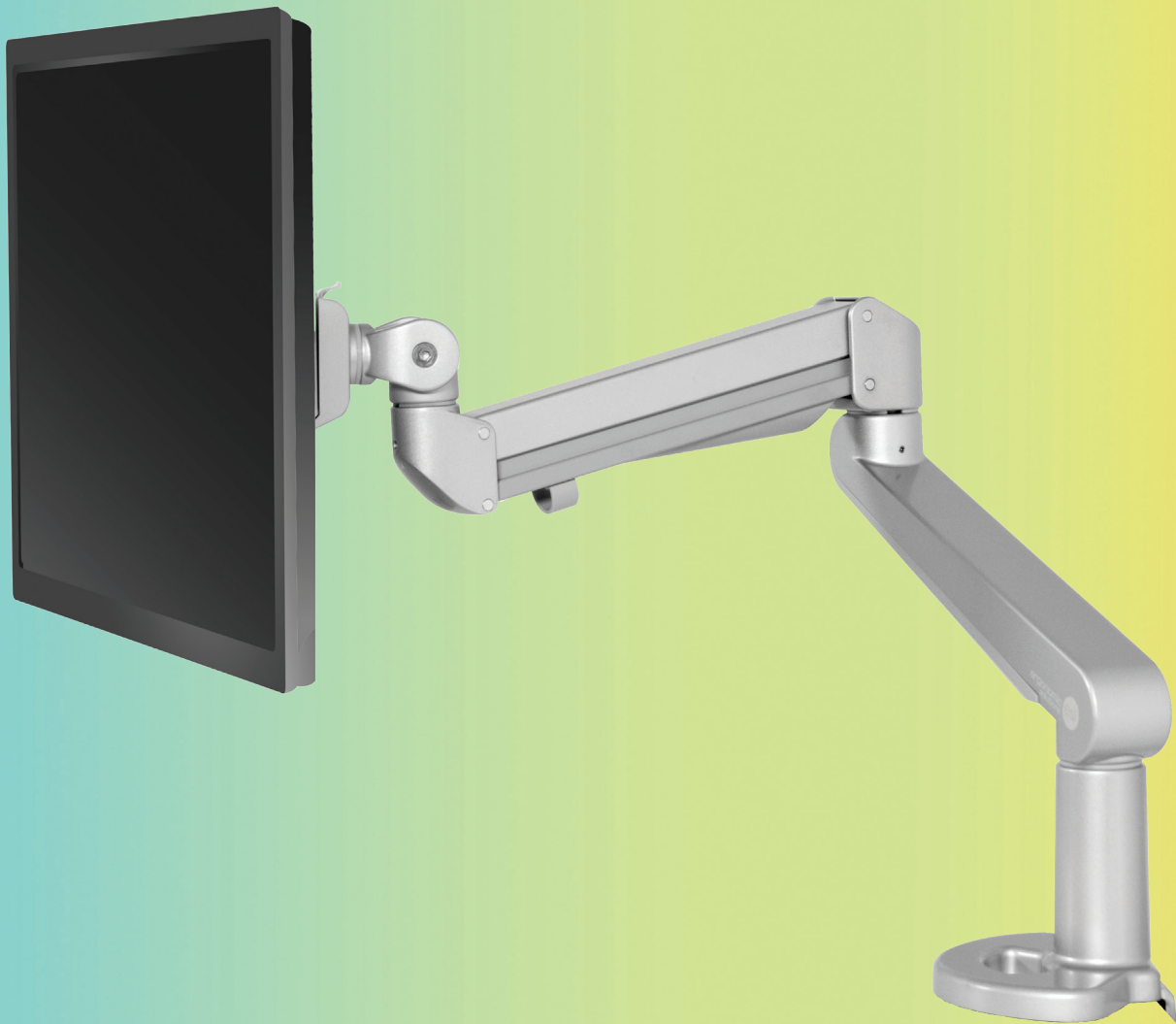
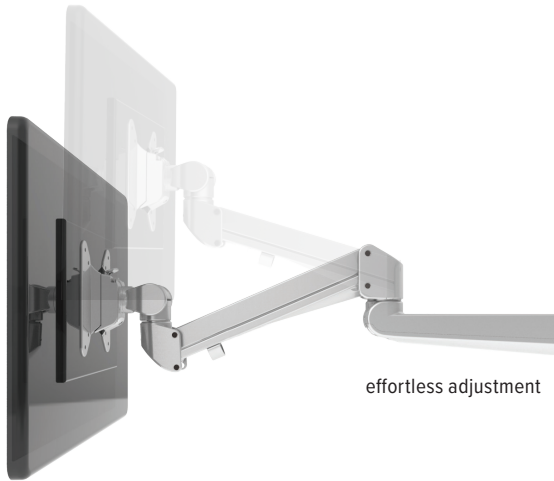


esi | work gear



Edge[®]

single monitor arm



effortless adjustment



cable management



landscape/portrait rotation



grommet mount



desk clamp



integrated allen key storage



VESA quick release

Product specs

- Finger touch dynamic height adjustment
- Recommended for worksurfaces 24.0"–36.0" deep
- 13.0" height adjustment range
 - 7.0"–20.0" (low/high)
- 22.5" arm extension
- 3.0" arm retraction
- +90°/-25° tilt
- ±90° rotation
- 6.5 lbs.–17.6 lbs. weight capacity
- VESA quick release
- 180° lock-out feature
- Desk clamp and grommet mount included
- Exceeds BIFMA x5.5 requirements
- Benching system mount(s) available. Call the Customer Service Dept for details
- Warranty: 15 yr.



Model

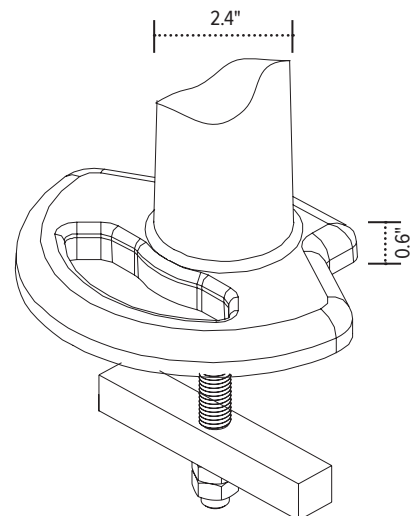
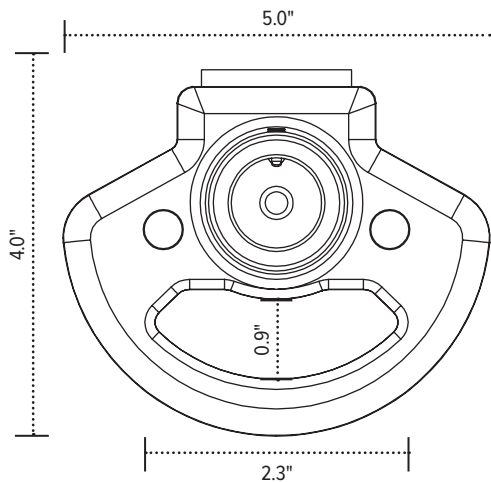
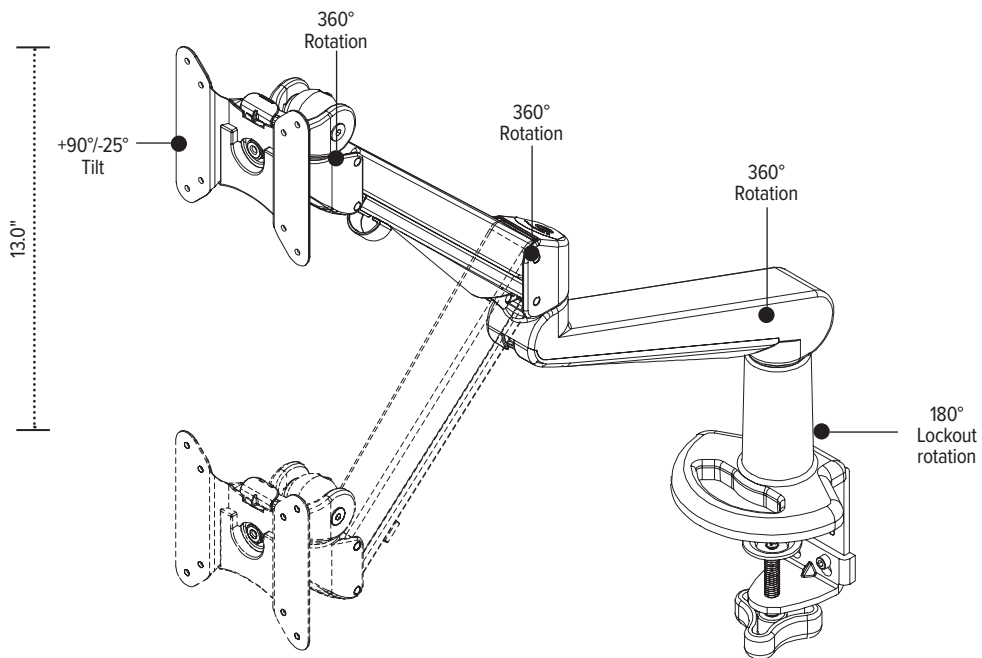
- ☐ EDGE-SLV
- ☒ EDGE-BLK
- ☐ EDGE-WHT

Conversion

Reuse most of the parts in your single Edge arm when you convert up to the Edge2 with our simple kit. *Conversion kit sold separately*

Edge

single monitor arm



esi

800.833.3746
esiergo.com