



Edge[®] 2-Max

Heavy duty dual monitor arm

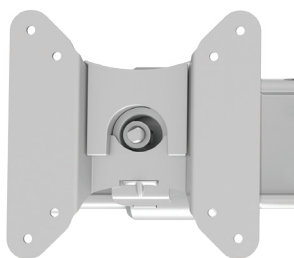
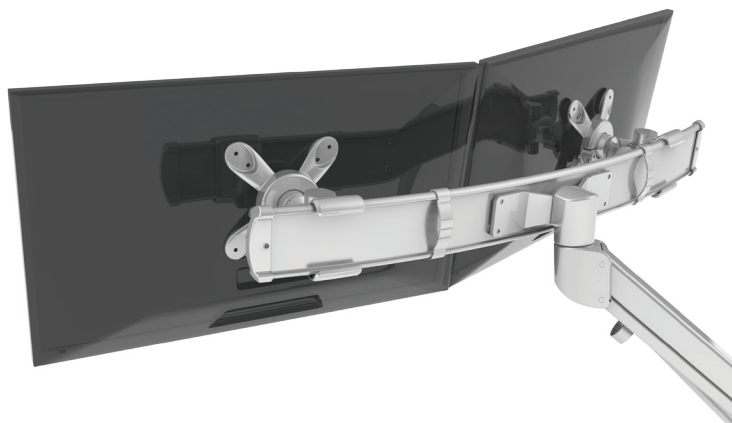
V34 - Pricing effective 3/1/2021

Edge2-Max

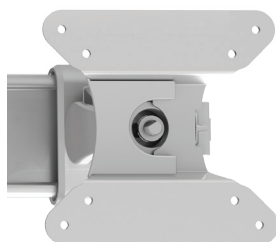
Heavy duty dual monitor arm



esi®



landscape rotation



portrait rotation



grommet mount



desk clamp

Product specs

- Finger touch dynamic height adjustment
- Weight capacity counterbalanced for heavy monitors and all-in-one computers
- Recommended for worksurfaces 36.0" deep or less
- 13.8" height adjustment range
 - 9.0"–22.8" (low/high)
- 30.5" arm extension
- 8.5" arm retraction
- $\pm 55^\circ$ monitor tilt
- $\pm 90^\circ$ VESA rotation
- 12.0lb.–38.5lb. weight capacity
(combined weight of both monitors)
- 30.3" total width of crossbar
- 180° lock-out feature
- 360° rotation at two points
- Meets or exceeds BIFMA x5.5 and CSA CAN/CGSB44.227 guidelines
- Desk clamp and grommet mount included
- 24.0" max. monitor width
Bezel measured left to right.
Max. width is contingent on weight capacity.
- Warranty: 15yr.



Model

List price

○ EDGE2-MAX-SLV \$745

Edge2-Max

Heavy duty dual monitor arm

