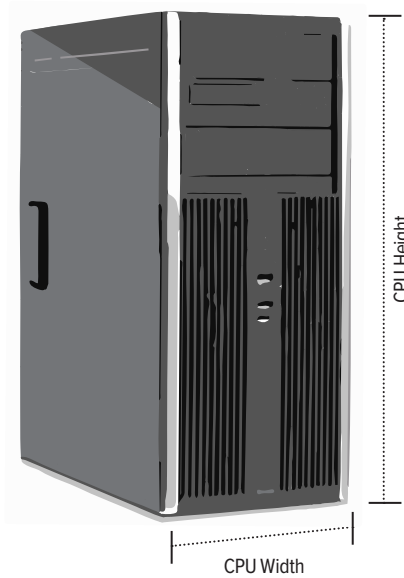
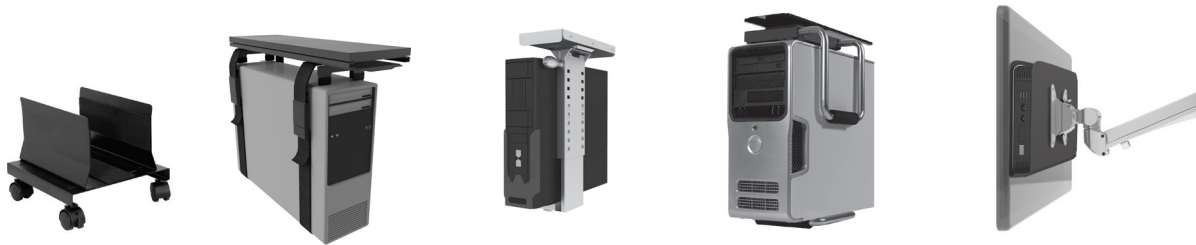


# CPU Holder Buying Guide



## Measuring your CPU

ESI offers a variety of CPU Holders to accommodate CPUs of virtually any shape and size. Reference the graphic to the right to measure your CPU Height and width, then take a look below to choose the CPU Holder for your work station application.



PRODUCT	CPU CART	CPU01	CPU MINI	CPU05	THIN CLIENT PCS
Model #	CPUCART-1	CPU01	CPUMINI	CPU05	CPU-TC
Mount location	Sits on floor	Under worksurface	Under worksurface	Under worksurface	Between monitor and monitor arm
CPU width	3.8"–9.0"	Max width 8.0"	2.7"–6.6"	2.5"–8.3"	1.4"–2.3"
CPU height	No height limits	Max height 24.0"	16.0"–22.0"	13.0"–21.0"	No height limits
Load capacity	160 lbs.	125 lbs.	55 lbs.	100 lbs.	Based on the weight capacity of the monitor arm and weight of the monitor

# CPU Holder Buying Guide



## CPU Cart

### Mobile CPU cart

- 160lbs. load capacity
- Fits CPU's ranging from 3.8"–9.0" wide
- CPU sits in adjustable tray
- (4) Four swivel caster wheels (2 locking)
- Easy to assemble; no tools required to make adjustments

### Model #

---

CPUCART-1



## CPU01

### Simple CPU Holder

- 125lbs. load capacity
- 360° swivel
- 17.8" glide track
- 12.5" min. CPU depth
- 8.0" min. CPU width
- 24.0" min. CPU height
- 60.0" adjustable straps

### Model #

---

CPU01



## CPU mini

### Small profile CPU holder

- 55lbs. load capacity
- 360° swivel
- 13.4" ball bearing glide track
- 2.7"–6.6" adjustable width
- 16.0"–22.0" adjustable height
- Fits CPUs up to 20.0" in height

### Model #

---

CPUMINI



## CPU05

### Heavy duty CPU holder

- 100lbs. load capacity
- 360° swivel
- 17.8" glide track
- 2.5"–8.3" adjustable width
- 13.0"–21.0" adjustable height

### Model #

---

CPU05



## Thin Client CPU

### Monitor arm CPU Holder

- Mounts between the monitor arm and monitor
- 1.4"–2.3" adjustable width
- Conforms to VESA 75mm/100mm
- Adjustment knobs are tamper and vibration resistant
- 3lbs. total weight
- Monitor arm sold separately

### Model #

---

LT CPU-TC