



# Evolve4-FF

Quad fixed + fixed monitor arm

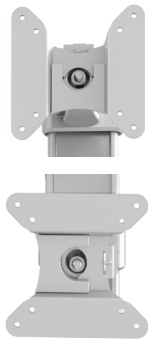
V36 - Pricing effective 1/1/2022

# Evolve4-FF

Quad fixed + fixed monitor arm



cable management



landscape/portrait rotation



grommet mount



desk clamp



VESA quick release



integrated allen key storage

## Product specs

- Manual height adjustment
- Recommended for worksurfaces 36.0" deep or less
- 28.9" arm extension
- 4.1" arm retraction
- +90°/-25° monitor tilt
- ±90° VESA rotation
- Up to 20.0lb. weight capacity (*per arm*)
- 30.0" pole height (*includes base*)
- VESA 75mm/100mm quick release
- 180° lock-out feature
- Desk clamp and grommet mount included
- 32.0" max. monitor width  
*Bezel measured left to right.*  
*Max. width is contingent on weight capacity.*  
*Note: monitor height/weight might limit size.*
- Meets or exceeds BIFMA x5.5 and CSA CAN/CGSB44.227 guidelines
- Warranty: 15 yr.



| Model #   | List price |
|---|------------|
| <input type="radio"/> EVOLVE4-FF-SLV            | \$1,310    |
| <input checked="" type="radio"/> EVOLVE4-FF-BLK | \$1,310    |
| <input type="radio"/> EVOLVE4-FF-WHT            | \$1,310    |

## Evolve monitor arm key

F - Fixed monitor arm

M - Motion monitor arm

S - Slider mount

## Evolve for every need

- As workstation needs change, so can the Evolve configurations. Additional components sold separately
- Benching system mount(s) available

*Call our Customer Service Department for compatibility and pricing for custom configurations.*

# Evolve4-FF



Quad fixed + fixed monitor arm

